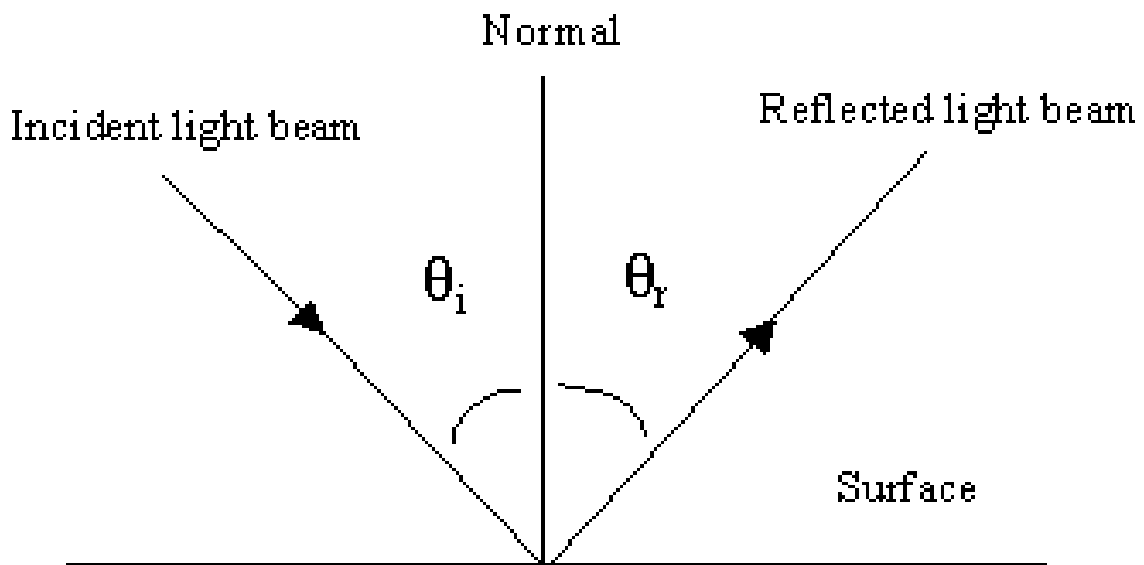
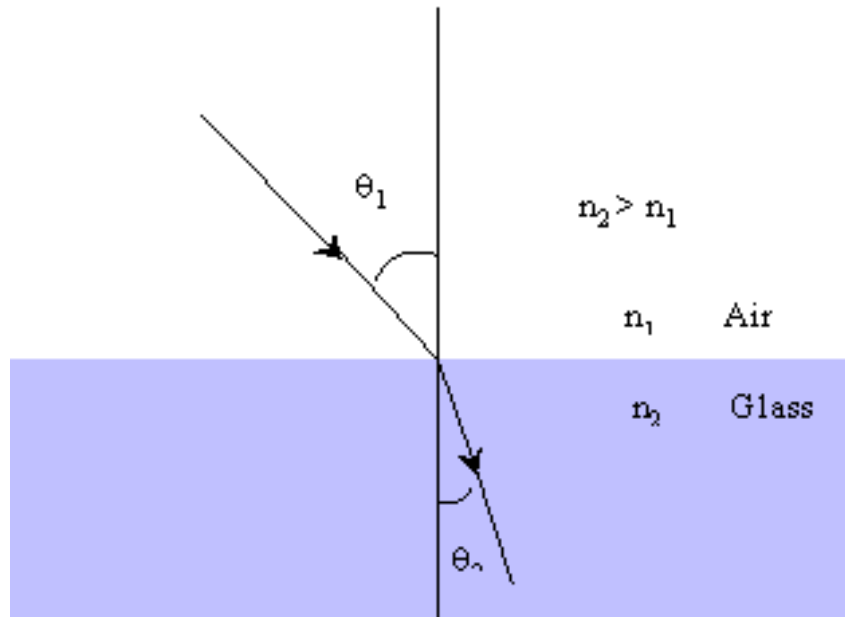


Fundamental rules of LIGHT to remember:

1. Light travels in a straight line.
2. Light intensity falls off as the square of the distance from the light source.
3. In light reflection, the angle of incidence always equals the angle of reflection.



4. In light refraction, light bends at the interface between two media. If we measure the angle from the perpendicular to the interface, the angle in the media with the higher index of refraction is the smallest.



5. In an interface between media, light may be both reflected and refracted.

