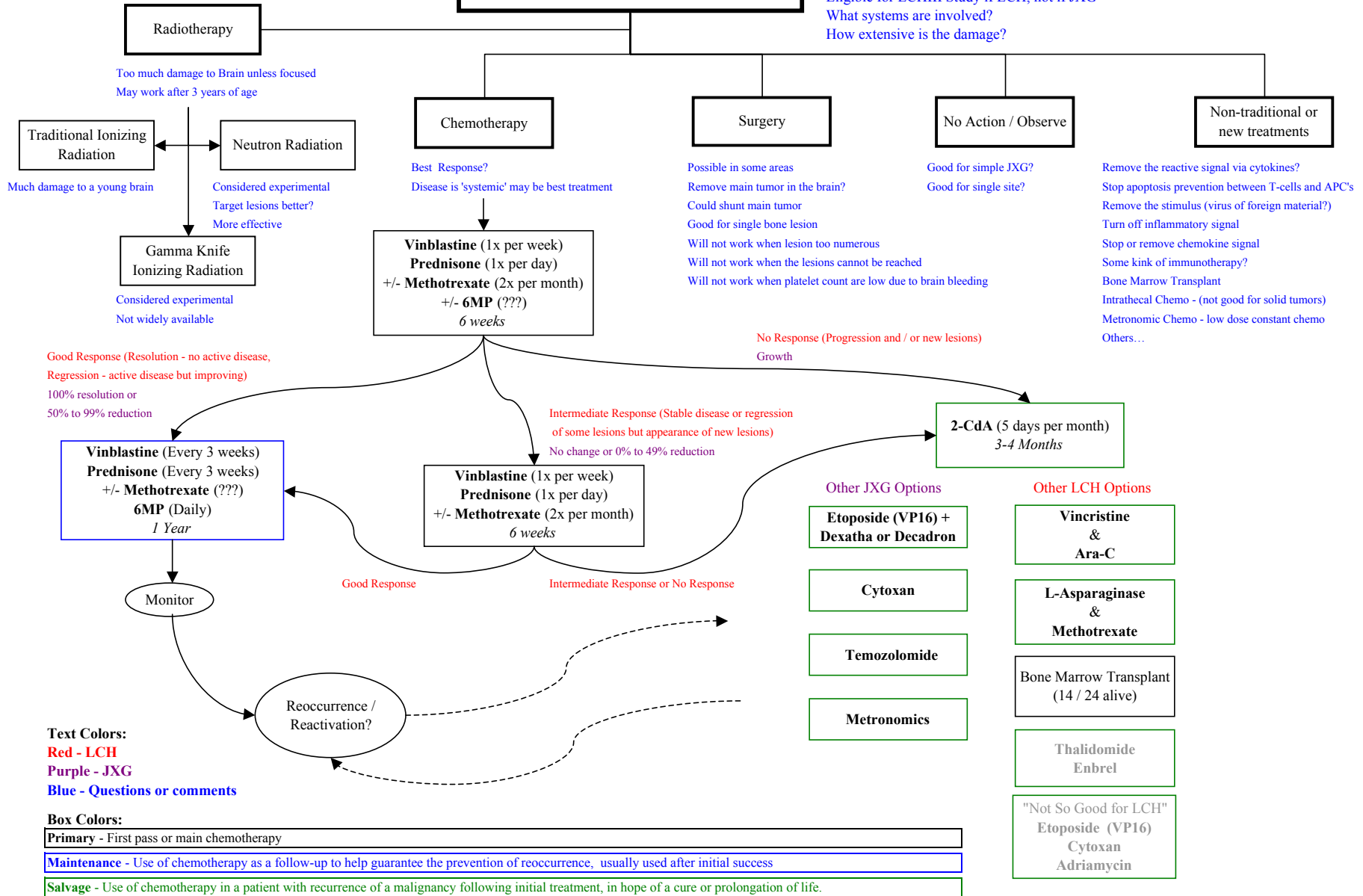


# Treatment Map for LCH & JXG

## How can we treat LCH & JXG?

We would treat them the same  
 Eligible for LCHIII Study if LCH, not if JXG  
 What systems are involved?  
 How extensive is the damage?



**Note:** This map follows the international protocol for the third LCH study for a person with high risk of Ben's age. Brain tumors are factored in.

**Disclaimer:** This map could be wrong. It is a summary to the best of my abilities. Many variants could exist.