

THE CHESAPEAKE & OHIO RAILWAY COMPANY

ARCH BRICK STORE HOUSE
STRUCTURE NO. 88
AT HINTON

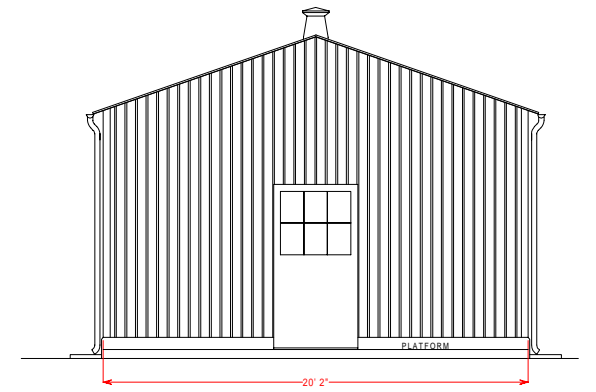
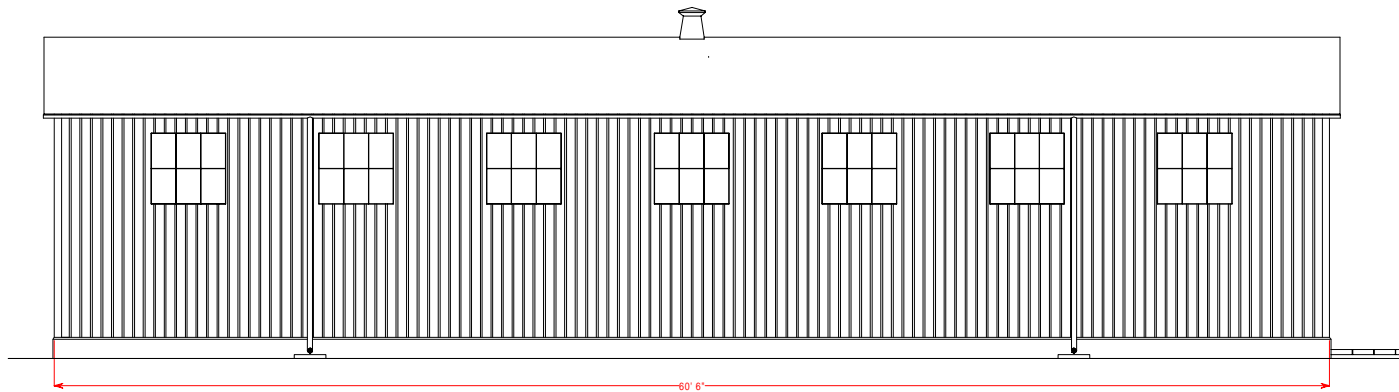
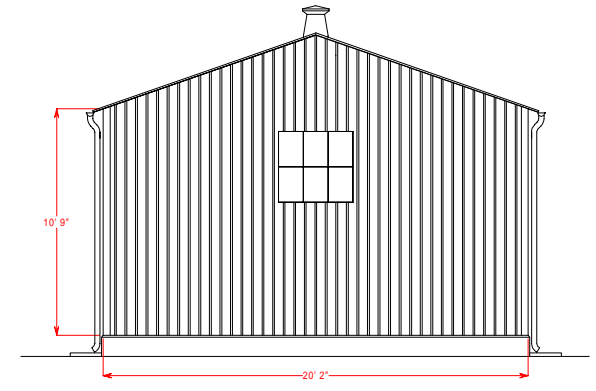
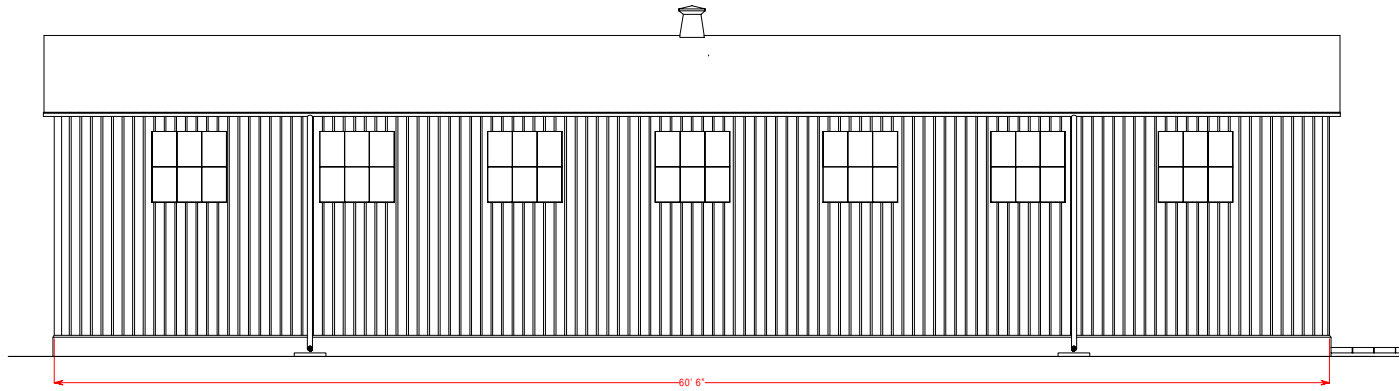
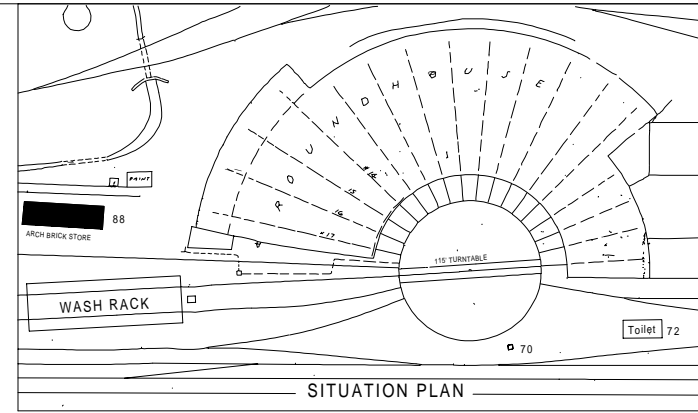
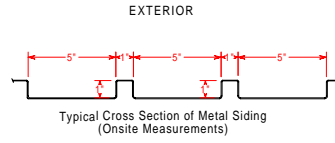
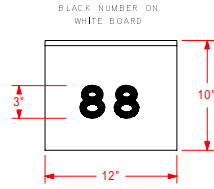
SUMMERS COUNTY - - - WEST VIRGINIA

HINTON DIVISION - - - NEW RIVER SUBDIVISION

SCALE: 1/4" = 1 FOOT
CIRCA 1946

COPYRIGHT BY:
WILLIAM E. SIMONTON III

02/2004
©



Note: Drawings based upon C & O Drawing No. 8720 and on-site measurements and photographs. All directions are railroad direction.