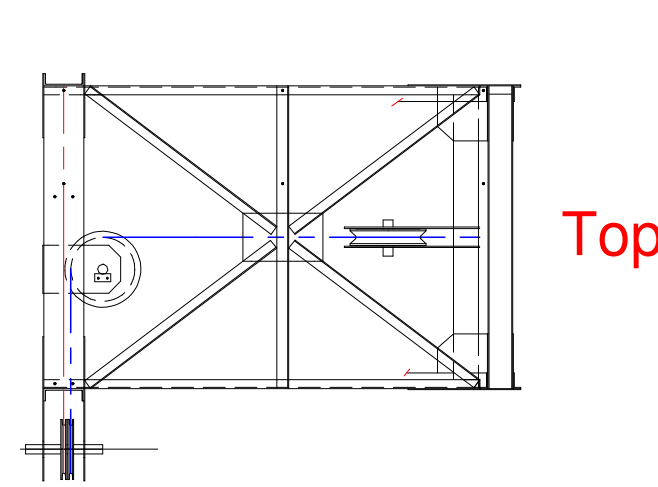
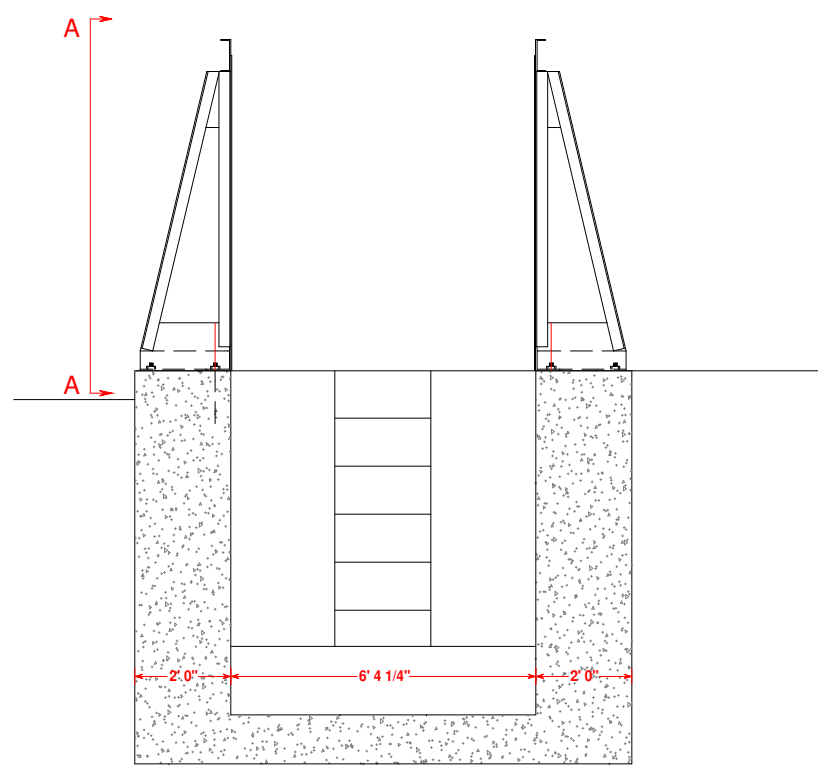
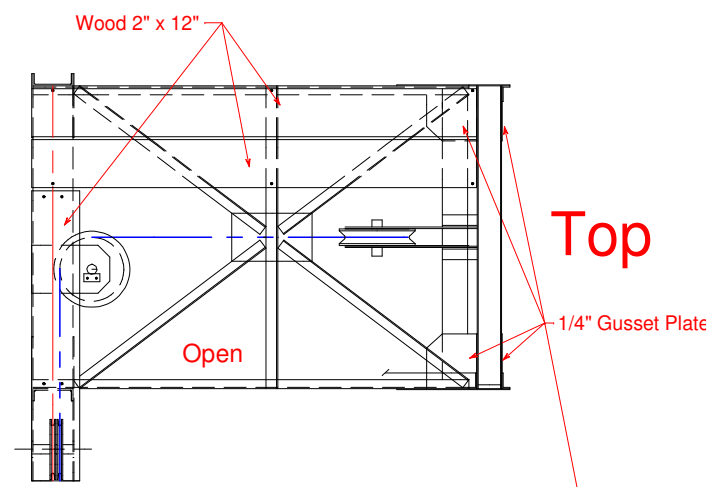


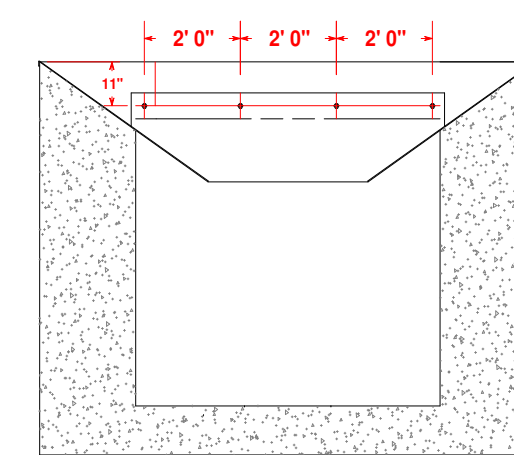
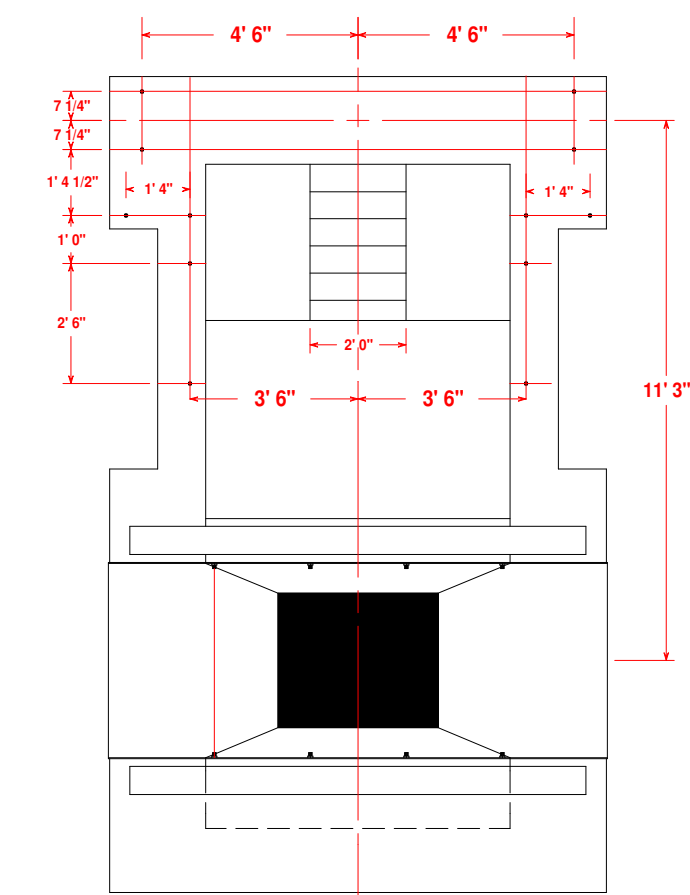
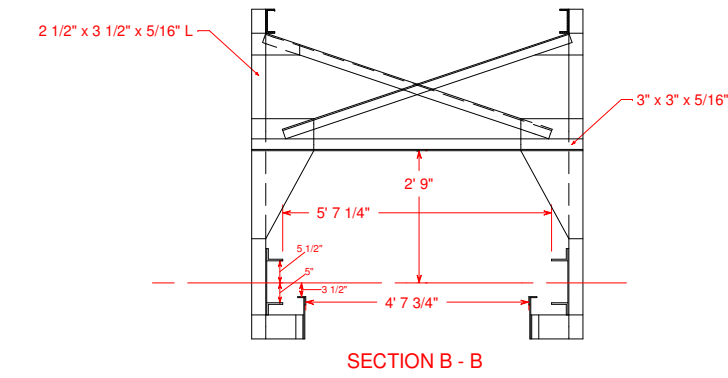
NOTES: Gusset Plates 1/4"
Bolts & Rivets 5/8"
Open Holes 11/16"
Field Connections Bolted
Shop Paint One Coat
Black Graphite



Top



Top



**CHILLINGSWORTH AIR
OPERATED UNIVERSAL
CINDER HOIST
Type S
March 8, 1924
Dwg. No. 268**

