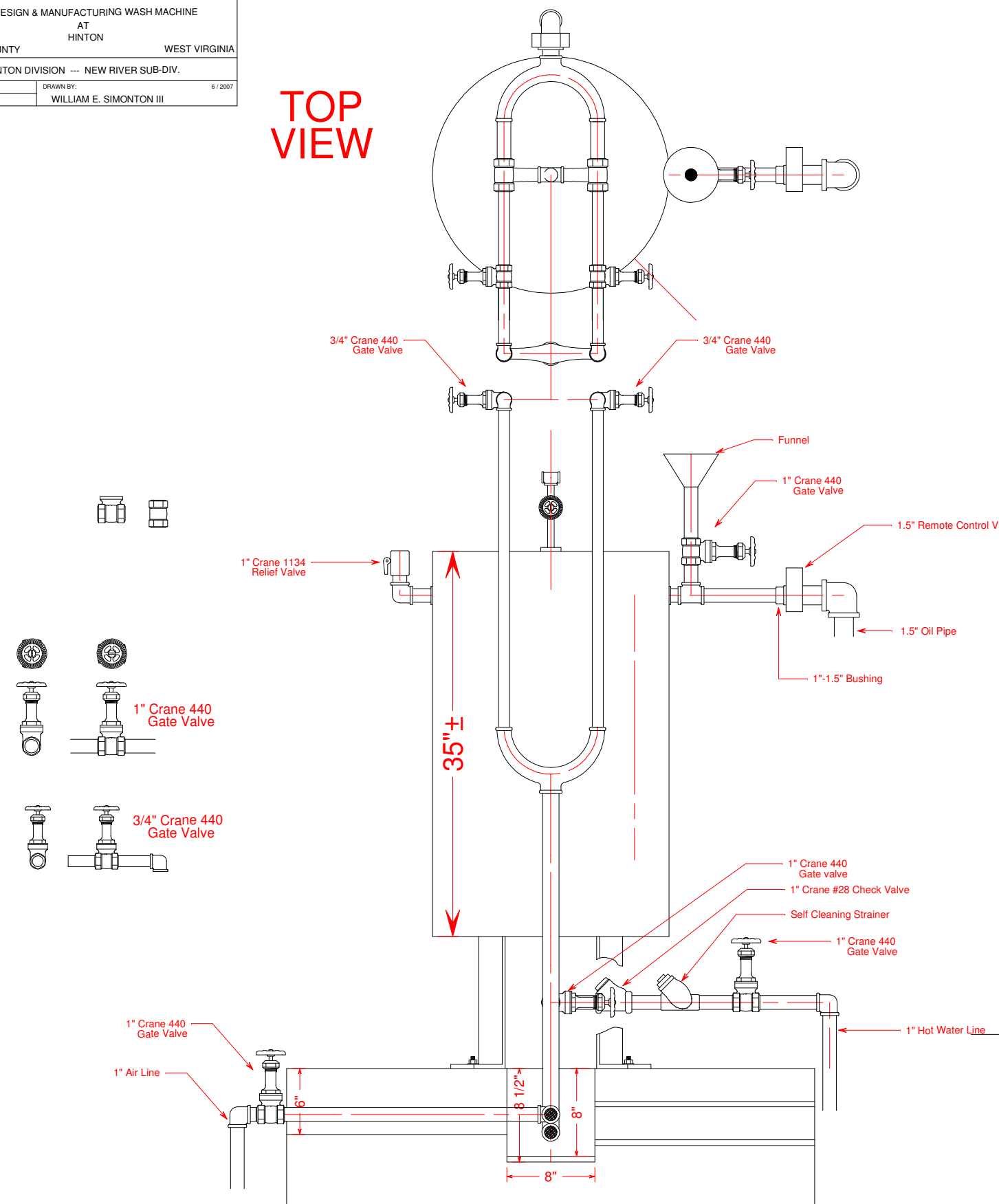


THE CHESAPEAKE AND OHIO RAILWAY COMPANY
 DESIGN & MANUFACTURING WASH MACHINE
 AT
 HINTON
 SUMMERS COUNTY WEST VIRGINIA
 HINTON DIVISION --- NEW RIVER SUB-DIV.
 Scale: 1" = 1 Ft. DRAWN BY: 6 / 2007
 CIRCA 1930 WILLIAM E. SIMONTON III

TOP VIEW



**D & M Wash Machine Arrangement
 (Design & Manufacturing)**

