

THE CHESAPEAKE & OHIO RAILWAY COMPANY

D & M PUMP HOUSE
STRUCTURE NO. 100
AT
HINTON

SUMMERS COUNTY - - - WEST VIRGINIA

HINTON DIVISION - - - NEW RIVER SUBDIVISION

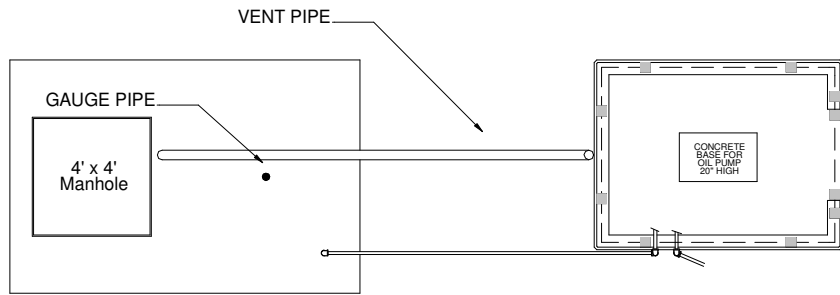
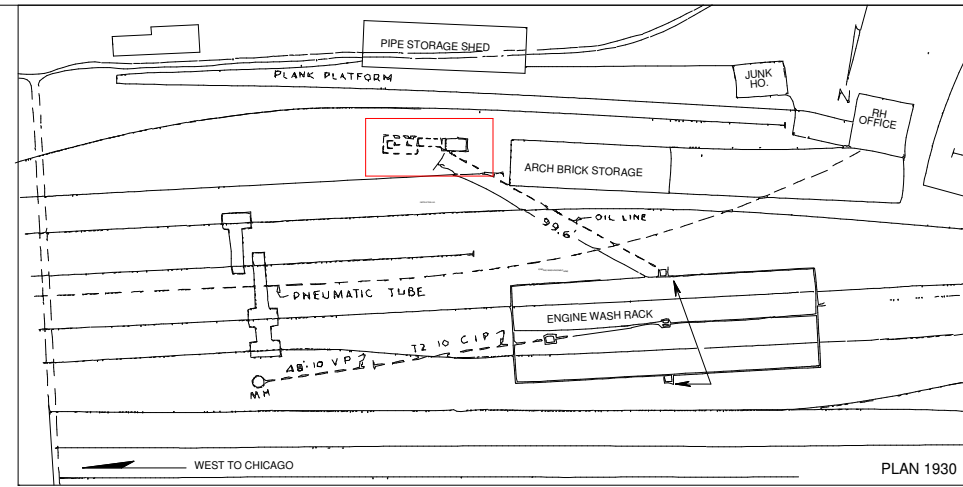
SCALE: 1/4" = 1 FOOT

CIRCA 1930

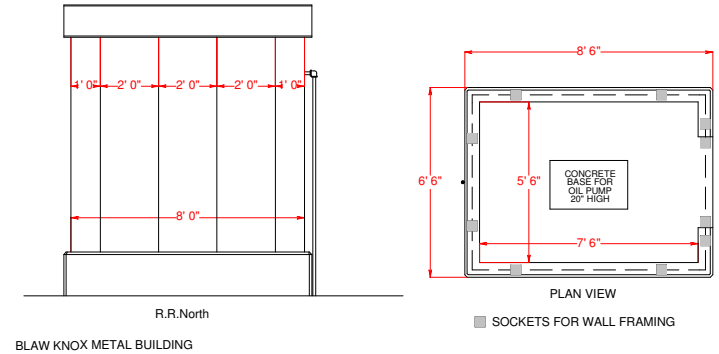
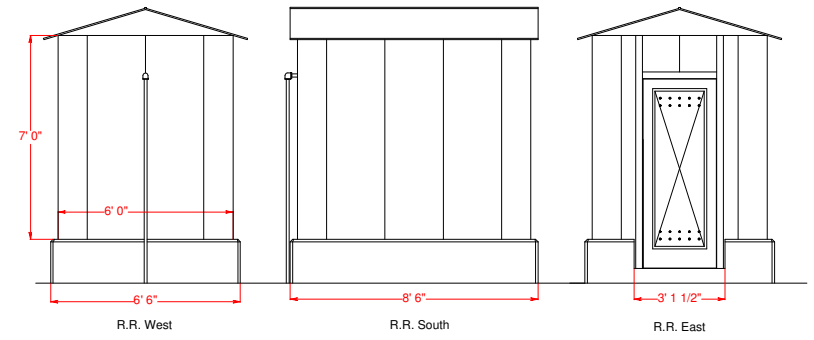
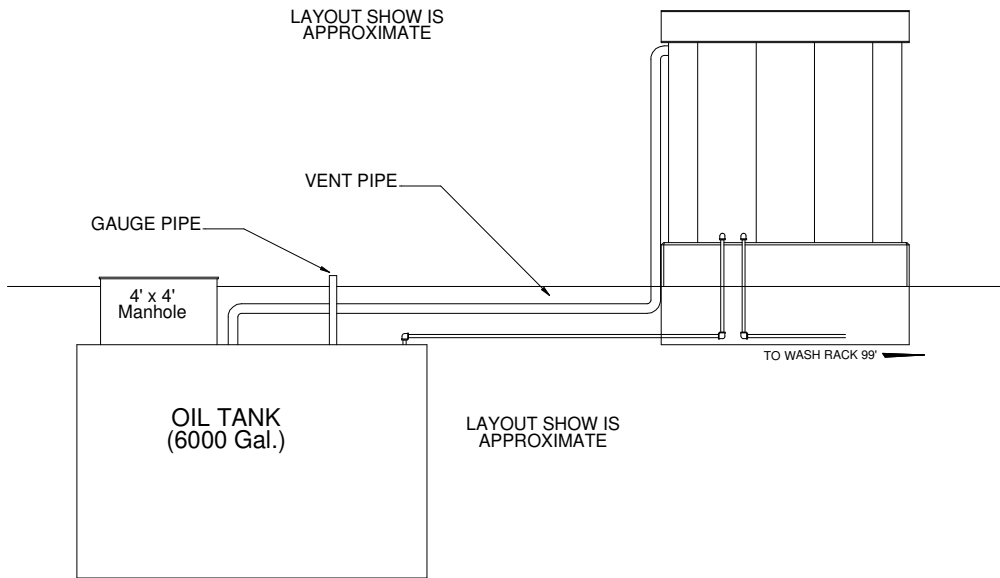
Copyright:

WILLIAM E. SIMONTON III

5/2004



LAYOUT SHOW IS APPROXIMATE



BLAW KNOX METAL BUILDING