

THE CHESAPEAKE & OHIO RAILWAY COMPANY

FAIRBANKS, MORSE & COMPANY
800 TON
COALING STATION
AT HINTON

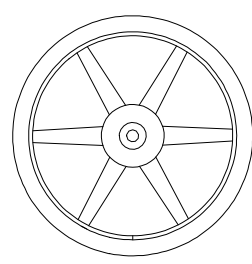
SUMMERS COUNTY - - - WEST VIRGINIA

HINTON DIVISION - - - NEW RIVER SUBDIVISION

SCALE: 1/4" = 1 FOOT
CIRCA 1946
Page 1 of 6

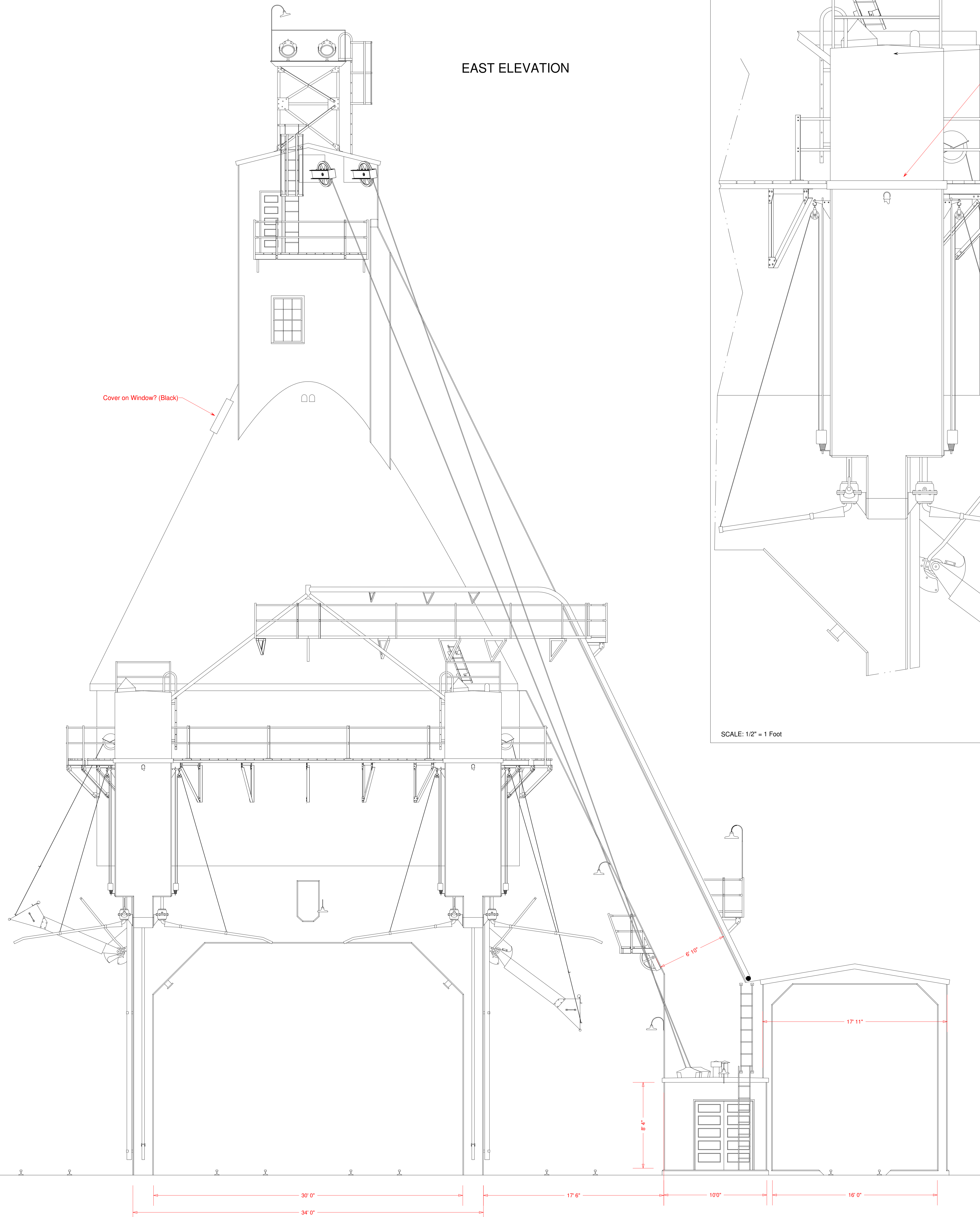
Copyright © 1993
WILLIAM E. SIMONTON III

Cable Sheave at Top of Monitor



SCALE: 1/2" = 1 Foot

EAST ELEVATION



SCALE: 1/2" = 1 Foot

The coaldock is typical Fairbanks Morse & Co. construction of reinforced concrete with standard appliances. The hoist house contained three electric motors - two to power the skip hoist winches and one to power the crusher in the pit which operated from a linkage to the motor in the hoist house. The stacks projecting from the roof of the hoist house were for cooling air intake and exhaust for those three motors. The only other motor was for the sorting grates in the top of the coaldock - the cooling intake and exhaust are visible projecting out of the east side just below the apex of the cone. The coaling chutes are asymmetrical due to the fact that the coaldock has two internal bins - one for 200 tons of lump coal and the second for 600 tons of stoker coal. The 200 ton bin occupied the eastern one-fourth of the coal dock next to the sand bunkers and coaled all four tracks. Although not apparent from the drawings, the sanding pipes telescoped to extend their reach.

Cover on Window? (Black)

Steel Addition Painted Black

6'10"

17'11"

8'4"

30'0"

34'0"

17'6"

10'0"

16'0"

0 10' 20' 30'