

ENGINE YARD LABORER'S HOUSE
STRUCTURE NO. 31
AT
HINTON

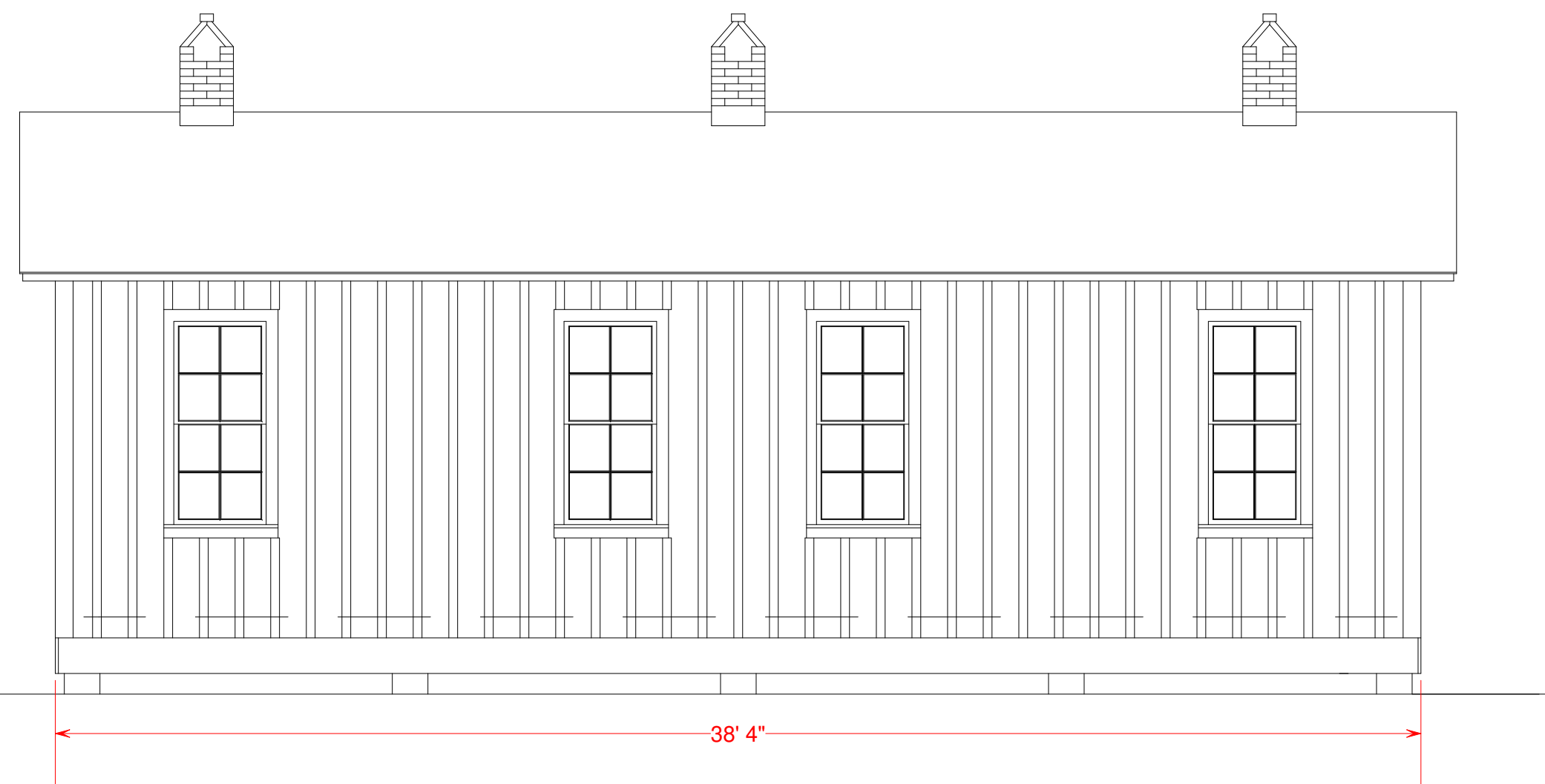
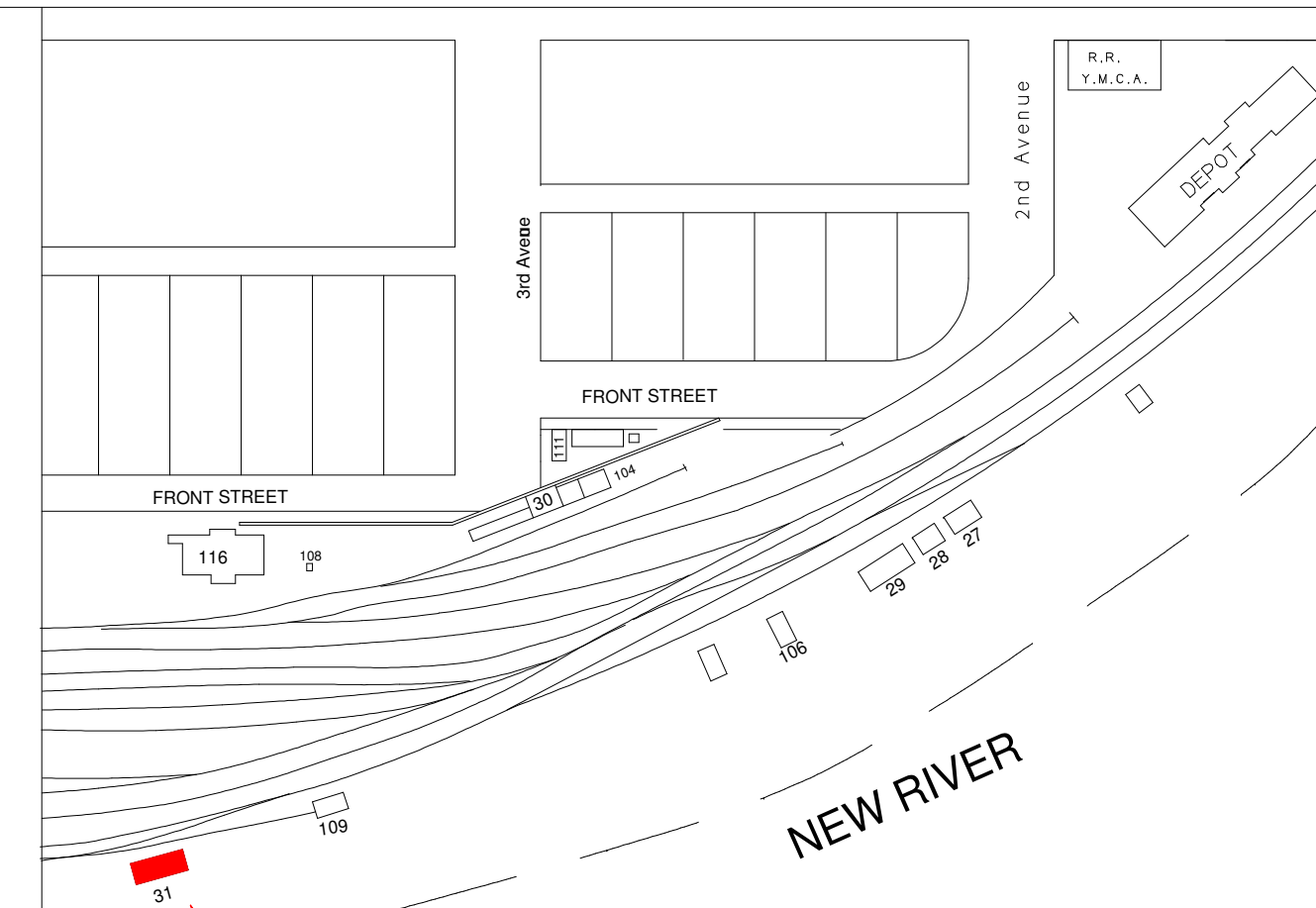
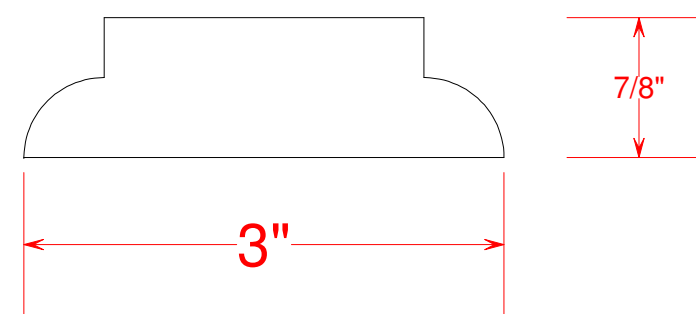
SUMMERS COUNTY WEST VIRGINIA

HINTON DIVISION --- NEW RIVER SUB-DIV.

SCALE : 1/4" = 1' DRAWN BY 3/87
CIRCA 1946 WILLIAM E. SIMONTON III

BATTEN DETAIL

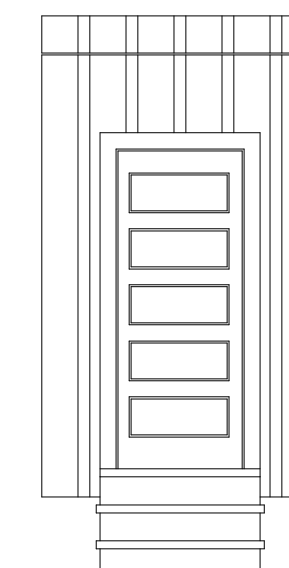
(Cross Section)



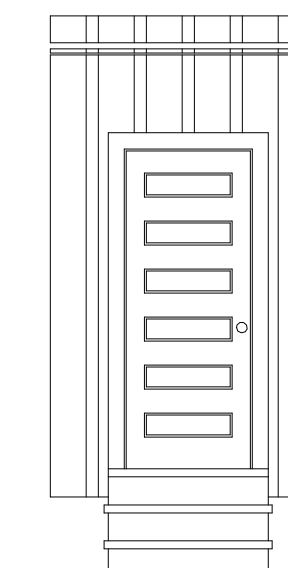
SOUTH ELEVATION



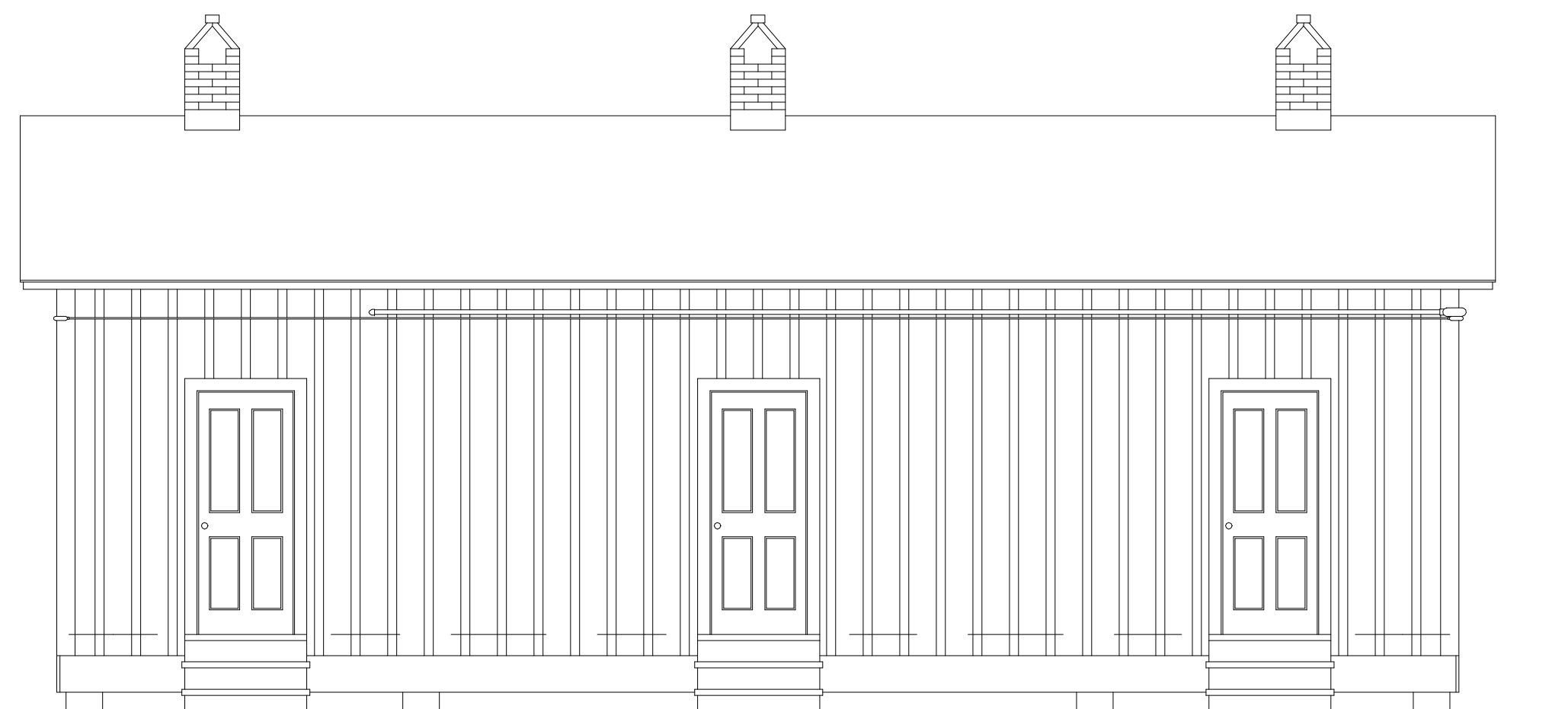
WEST ELEVATION



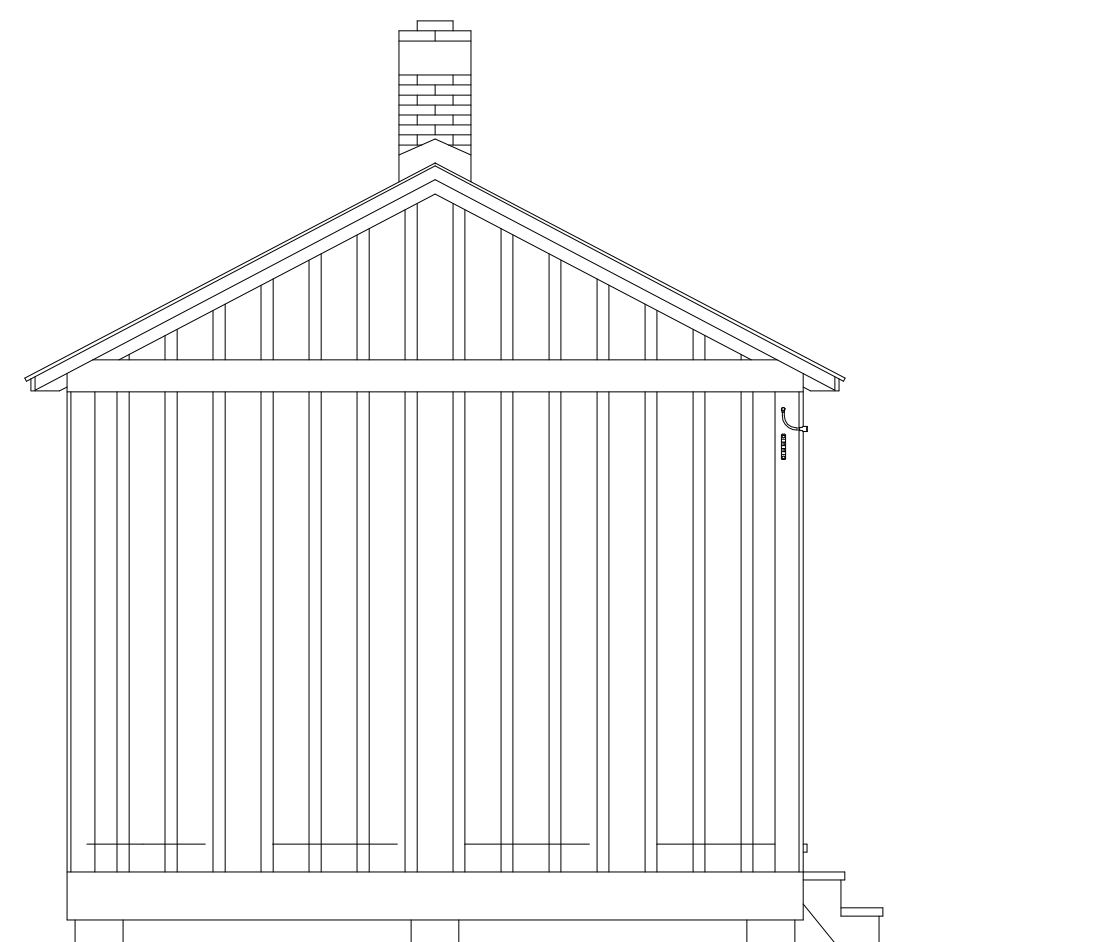
East Door 1985



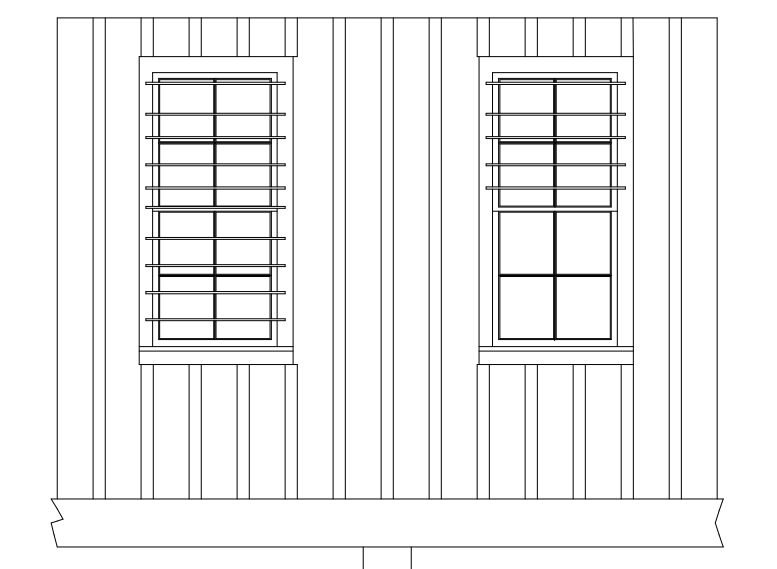
Center Door 1985



NORTH ELEVATION



EA ST ELEVATION



Center Windows 1985
Bars are 5/8" Rebar

