

THE CHESAPEAKE & OHIO RAILWAY COMPANY

ICE HOUSE AND ICING PLATFORM  
STRUCTURE NO. 30

AND  
AIR CONDITIONING SUPPLY HOUSE  
STRUCTURE NO. 104  
AT HINTON

SUMMERS COUNTY - - - WEST VIRGINIA

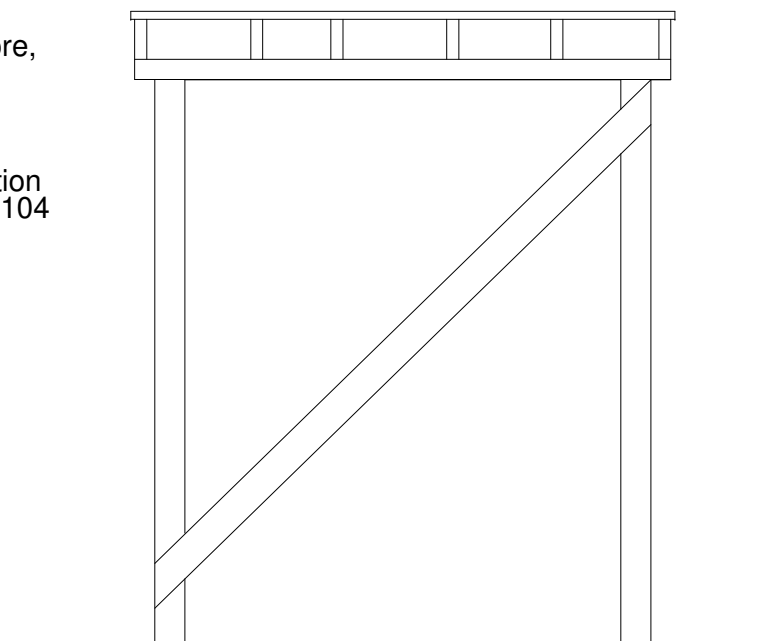
HINTON DIVISION - - - NEW RIVER SUBDIVISION

SCALE: 1/4" = 1 FOOT  
CIRCA 1934

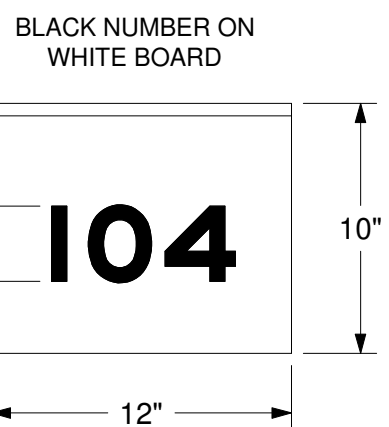
COPYRIGHT BY:  
WILLIAM E. SIMONTON III

5/2007

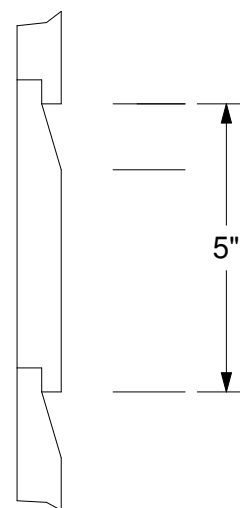
Partial records indicate that a cinder conveyor used to service a steam wreck crane was removed just railroad west of the ice house in 1943. Therefore, it is very probable that the western half of the icing platform was added in 1943 or after. This drawing represents the author's best estimate of the ice house appearance prior to 1934 and the addition of the Air Conditioning Supply House #104



WEST ELEVATION



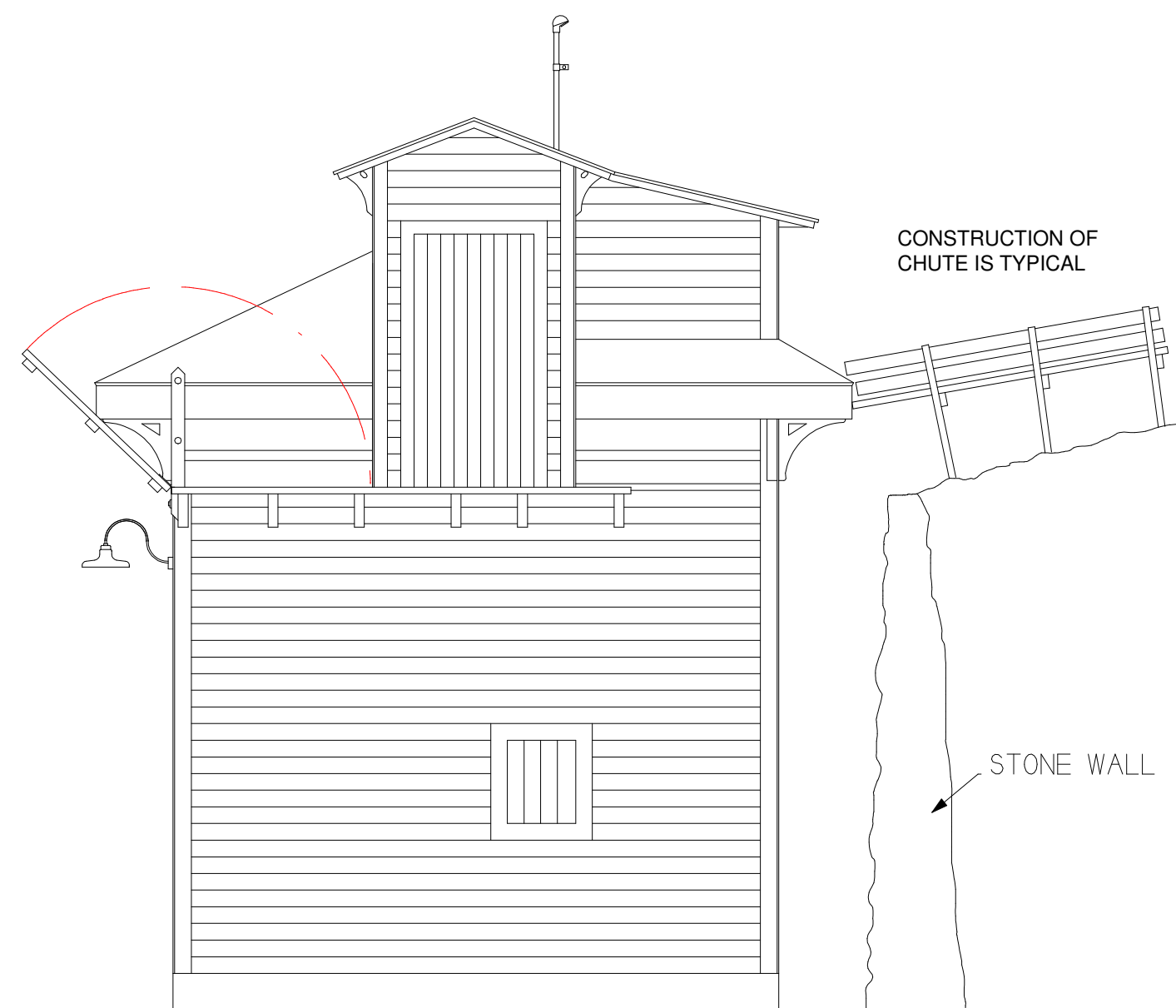
BLACK NUMBER ON  
WHITE BOARD



NOTE THAT THE  
SIDING ON THE TOP  
AND BOTTOM ARE  
BOTH THE SAME IN  
SIZE IF NOT CROSS  
SECTION

TYPICAL CROSS SECTION OF SIDING ON  
ICE HOUSE AND AIR CONDITIONING SUPPLY  
HOUSE WITH DIMENSIONS INDICATED.

Ice House apparently built prior to 1916, and may not have had icing platform as built (See 1916 Evaluation Map).



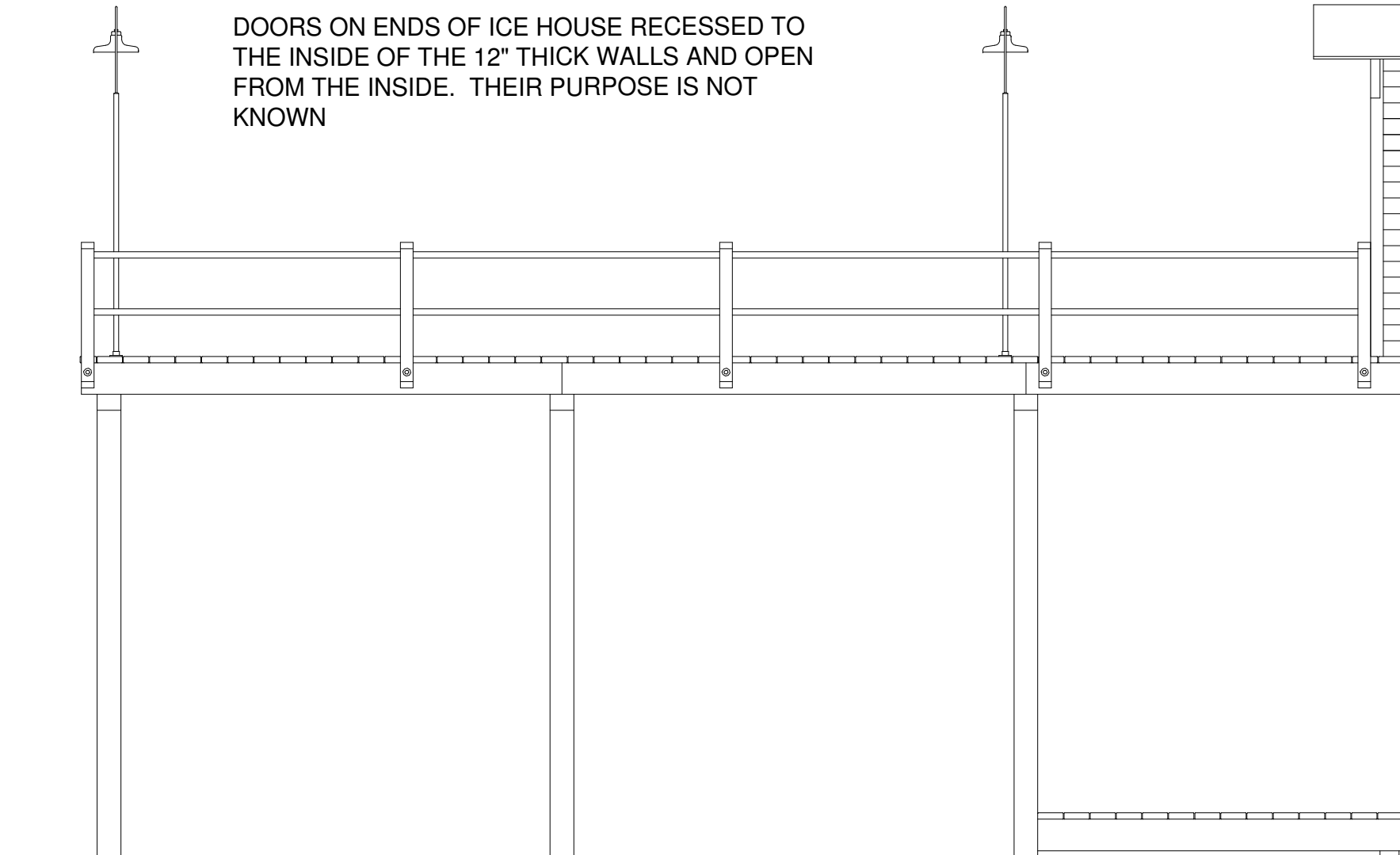
CONSTRUCTION OF  
CHUTE IS TYPICAL

STONE WALL

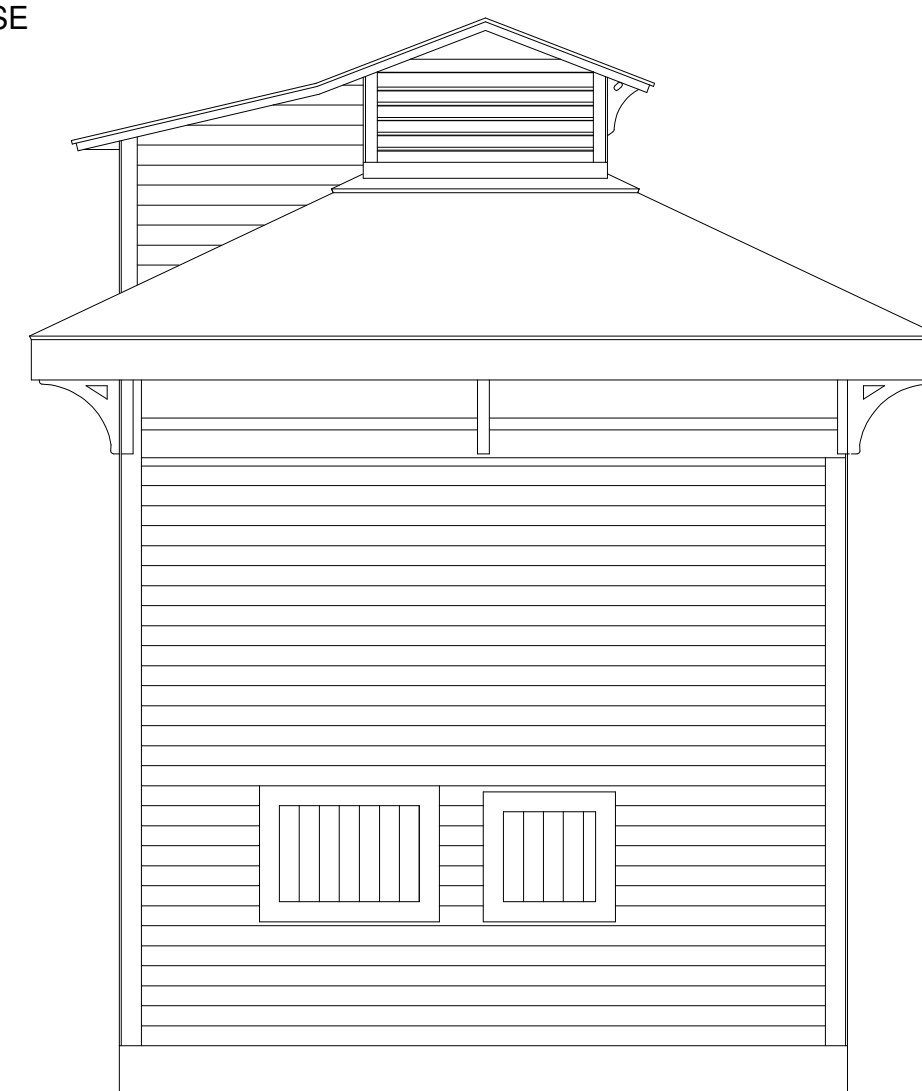
15' 2.0"

EAST ELEVATION  
ICE HOUSE

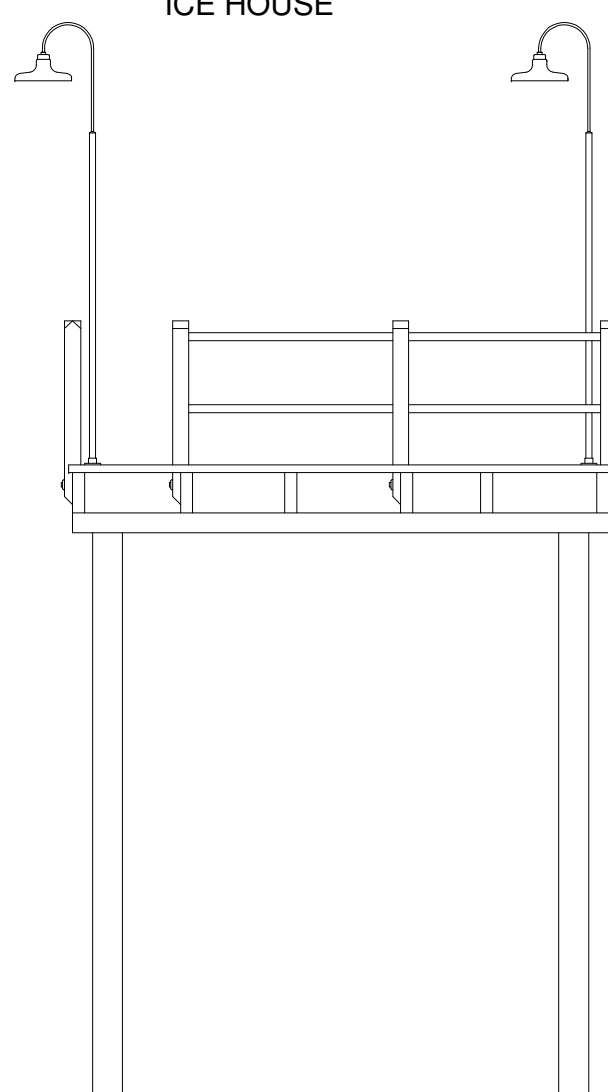
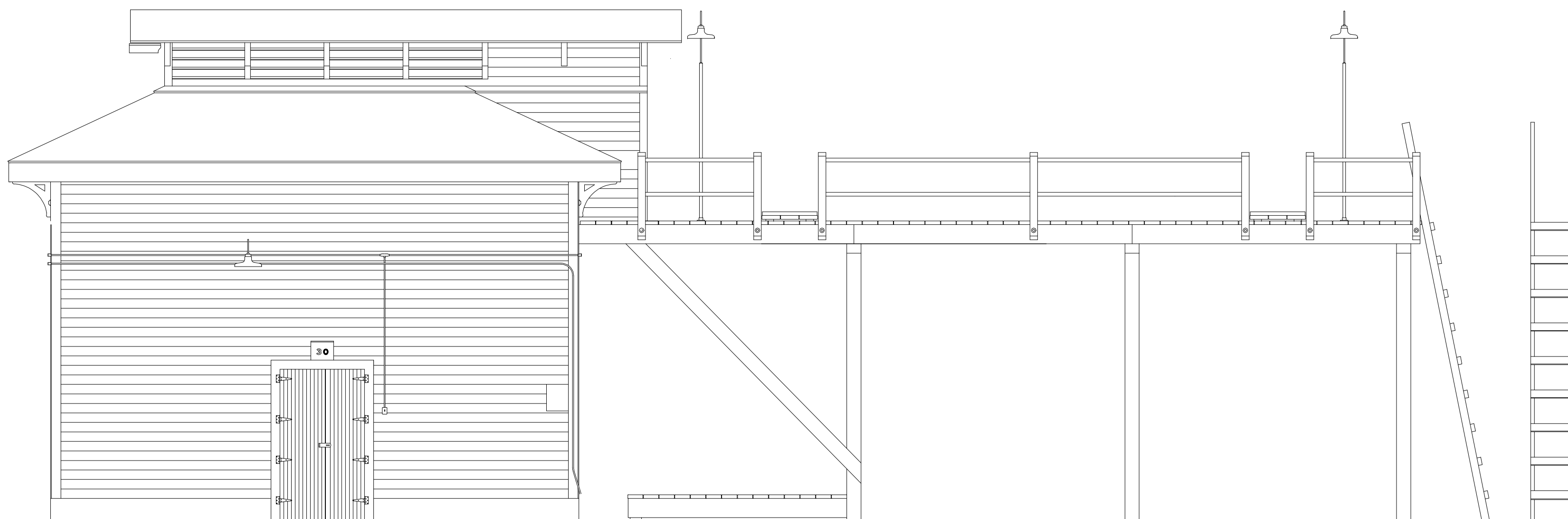
DOORS ON ENDS OF ICE HOUSE RECESSED TO  
THE INSIDE OF THE 12" THICK WALLS AND OPEN  
FROM THE INSIDE. THEIR PURPOSE IS NOT  
KNOWN



23' 2.0"



WEST ELEVATION  
ICE HOUSE



EAST ELEVATION

SOUTH ELEVATION (RAILROAD DIRECTION)