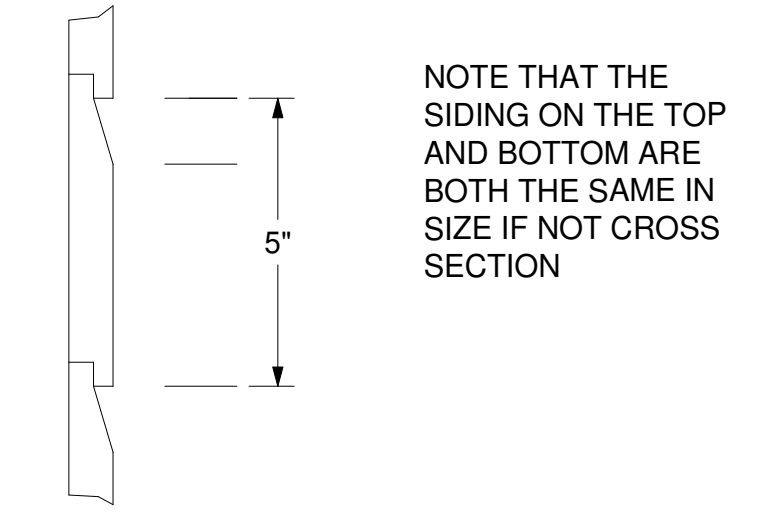
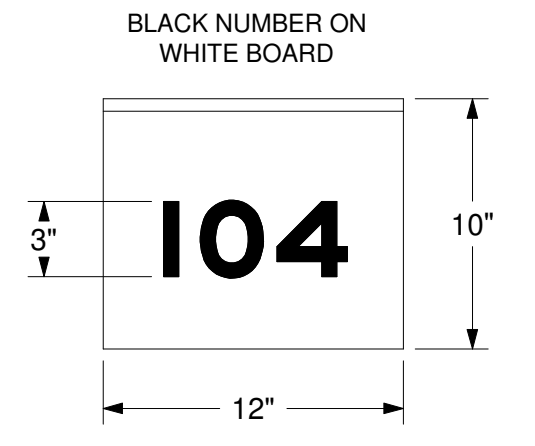
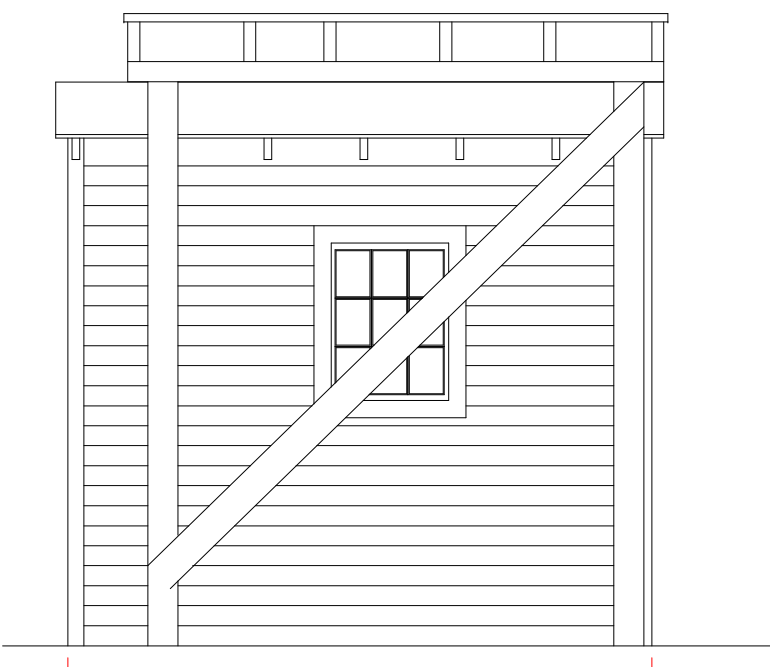


THE CHESAPEAKE & OHIO RAILWAY COMPANY
 ICE HOUSE AND ICING PLATFORM
 STRUCTURE NO. 30
 AND
 AIR CONDITIONING SUPPLY HOUSE
 STRUCTURE NO. 104
 AT HINTON
 SUMMERS COUNTY - - - WEST VIRGINIA
 HINTON DIVISION - - - NEW RIVER SUBDIVISION
 SCALE: 1/4" = 1 FOOT COPYRIGHT BY: 4/93
 CIRCA 1946 WILLIAM E. SIMONTON III

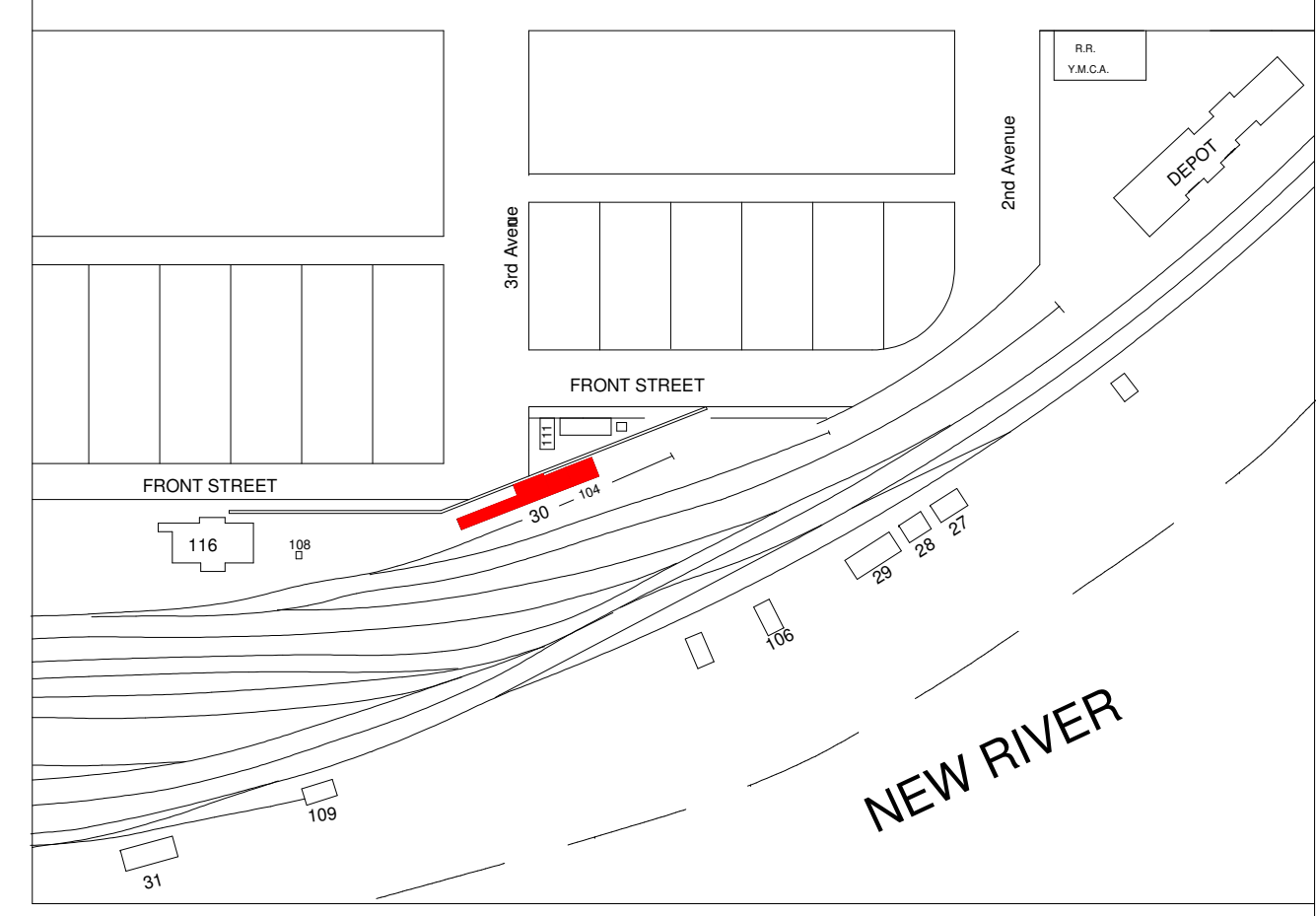
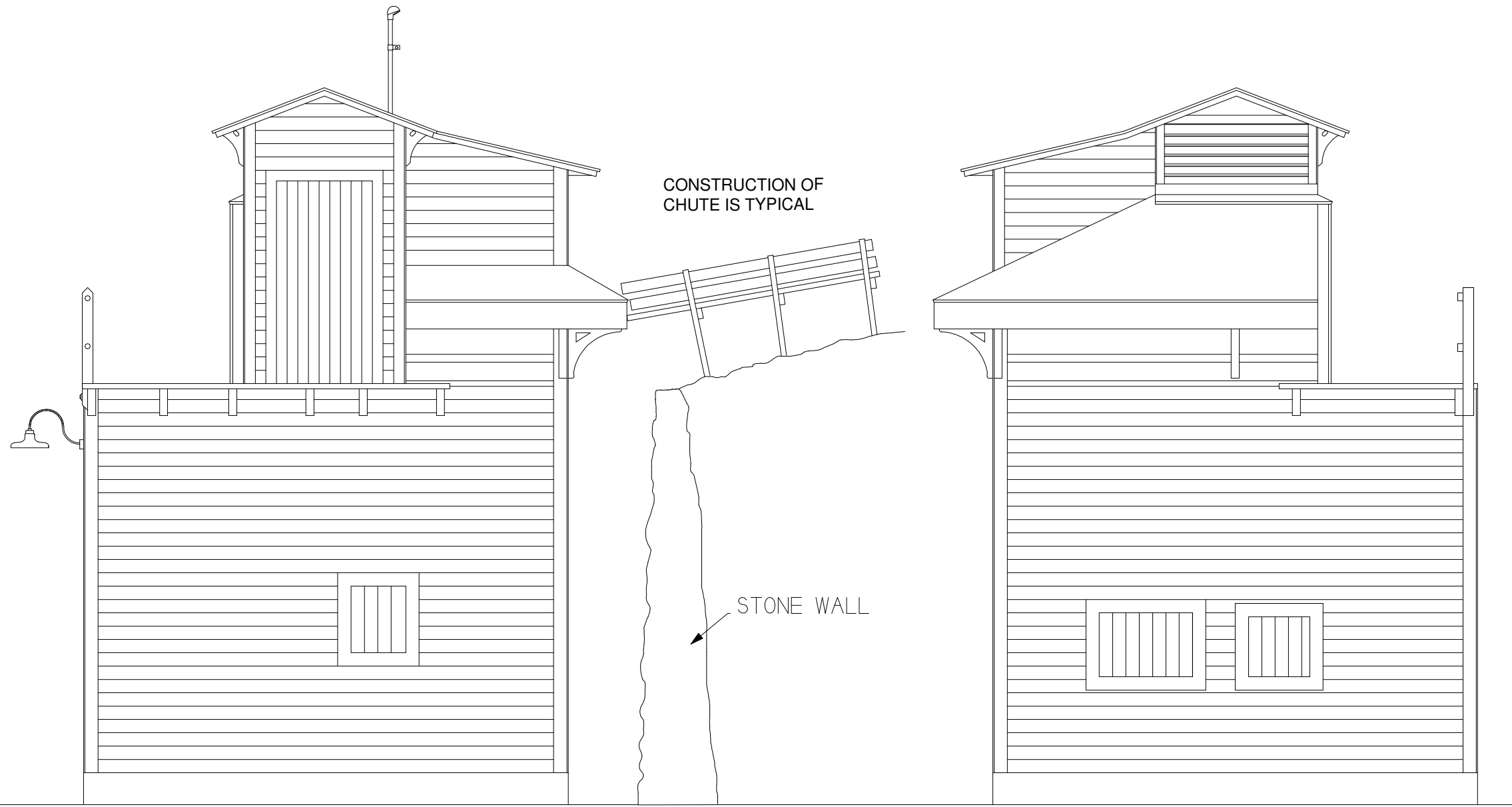


TYPICAL CROSS SECTION OF SIDING ON ICE HOUSE AND AIR CONDITIONING SUPPLY HOUSE WITH DIMENSIONS INDICATED.

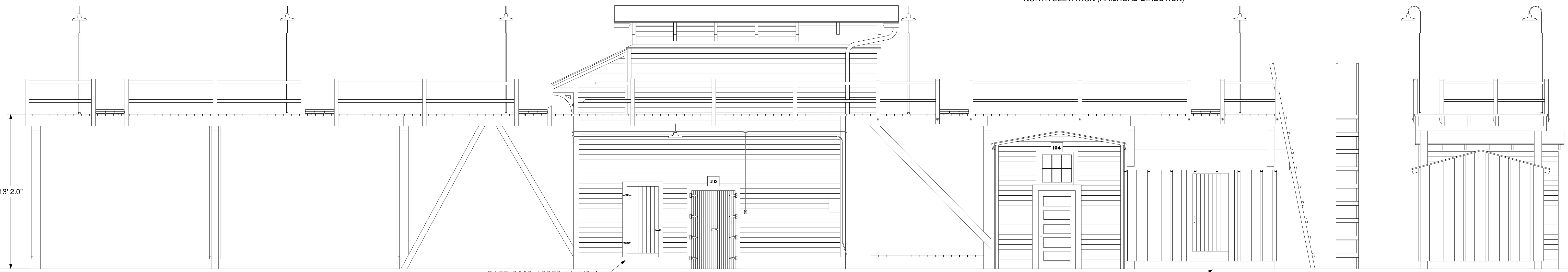
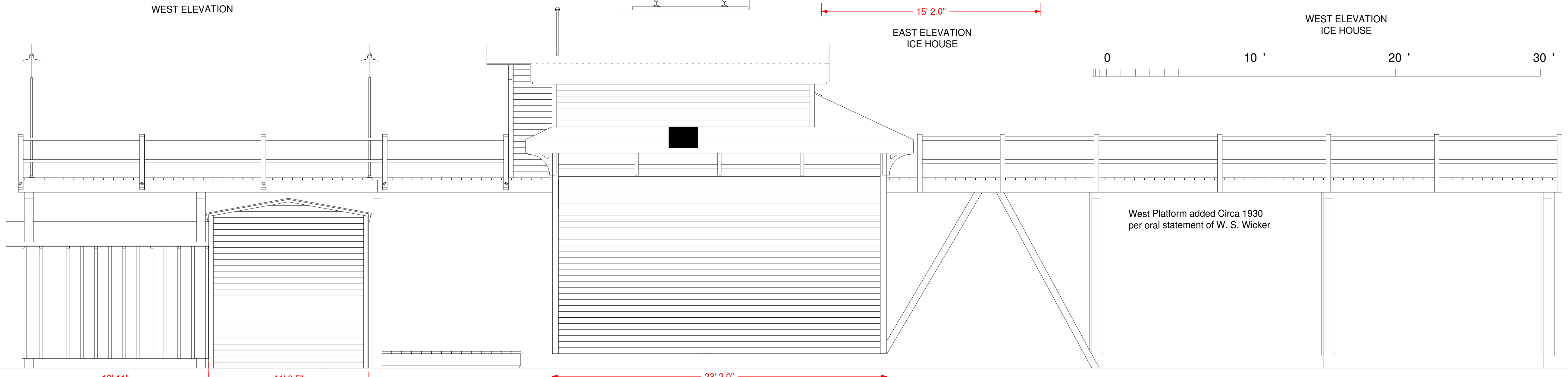
Ice House apparently built prior to 1916, and may not have had icing platform as built (See 1916 Evaluation Map). Building 104 was built circa 1935 when the C & O's first air conditioned passenger train the George Washington was placed in service.



12' 2.0"
WEST ELEVATION



DOORS ON ENDS OF ICE HOUSE RECESSED TO THE INSIDE OF THE 12" THICK WALLS AND OPEN FROM THE INSIDE. THEIR PURPOSE IS NOT KNOWN



SOUTH ELEVATION (RAILROAD DIRECTION)

EAST ELEVATION