

THE CHESAPEAKE AND OHIO RAILWAY COMPANY

INSPECTION MOTOR CAR HOUSE
STRUCTURE NO. 109
AT
HINTON

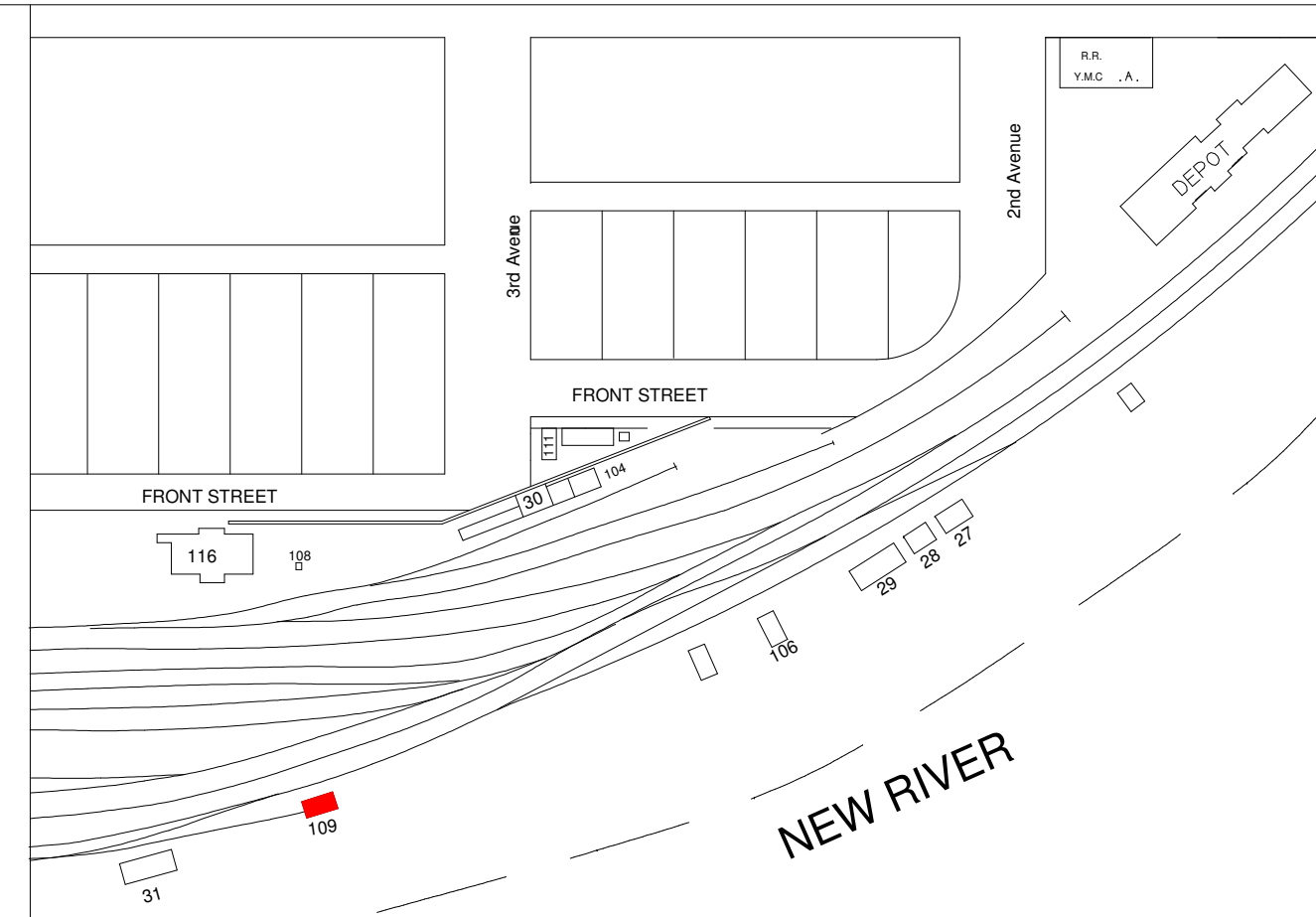
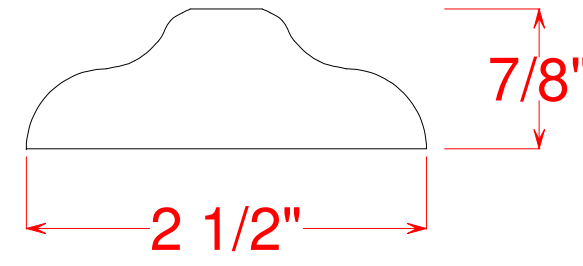
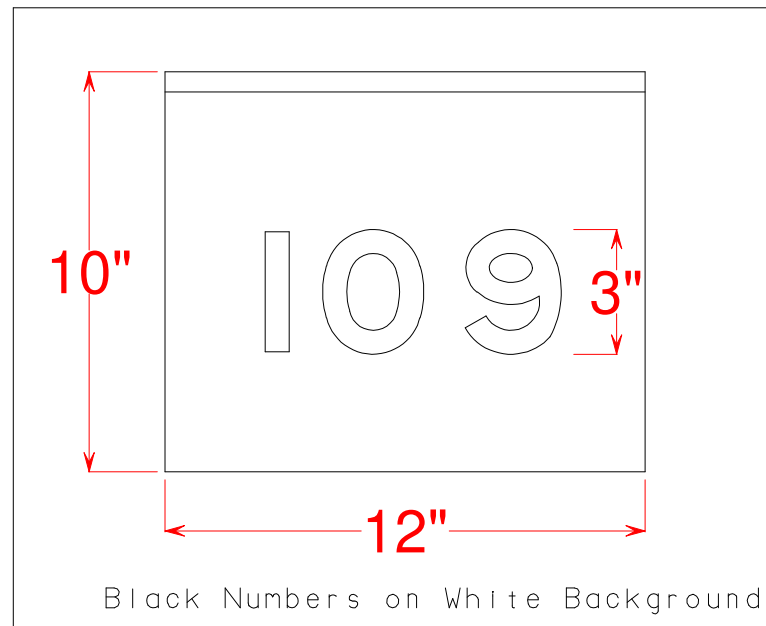
SUMMERS COUNTY WEST VIRGINIA

HINTON DIVISION --- NEW RIVER SUB-DIV.

SCALE: 1/4" = 1' DRAWN BY 4/87
CIRCA 1946 WILLIAM E. SIMONTON III

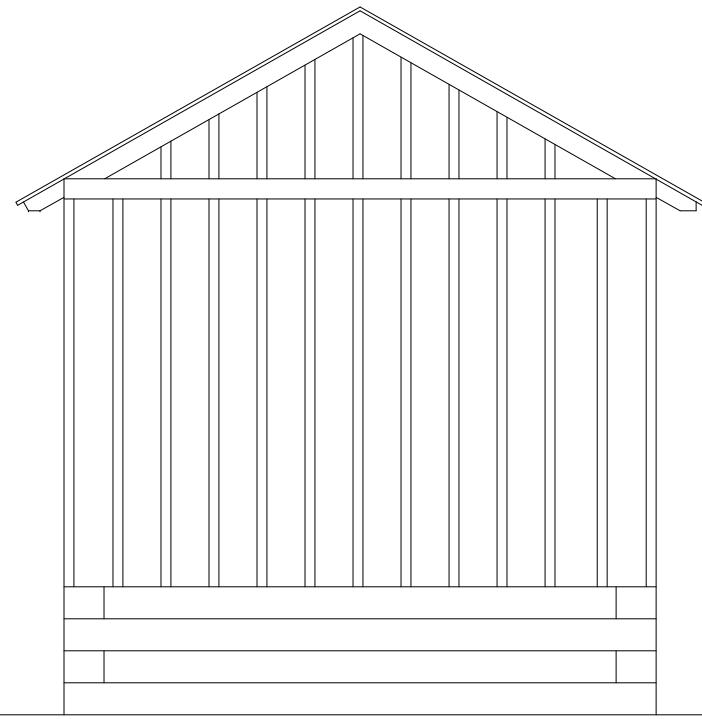
Copies of these drawings may be
made for noncommercial use only

BATTEN DETAIL (Cross Section)

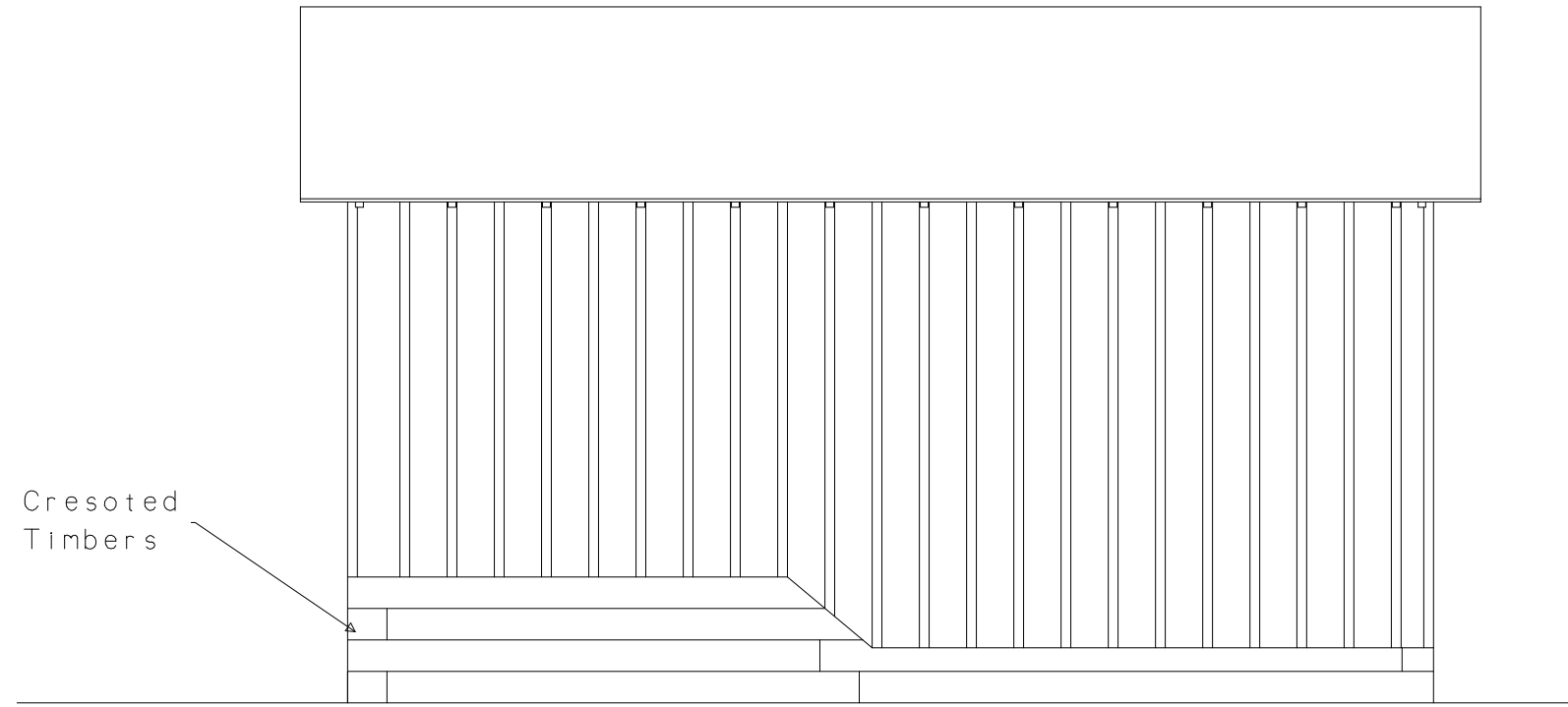


GASOLINE
KEEP FIRE
AND
LIGHTS AWAY

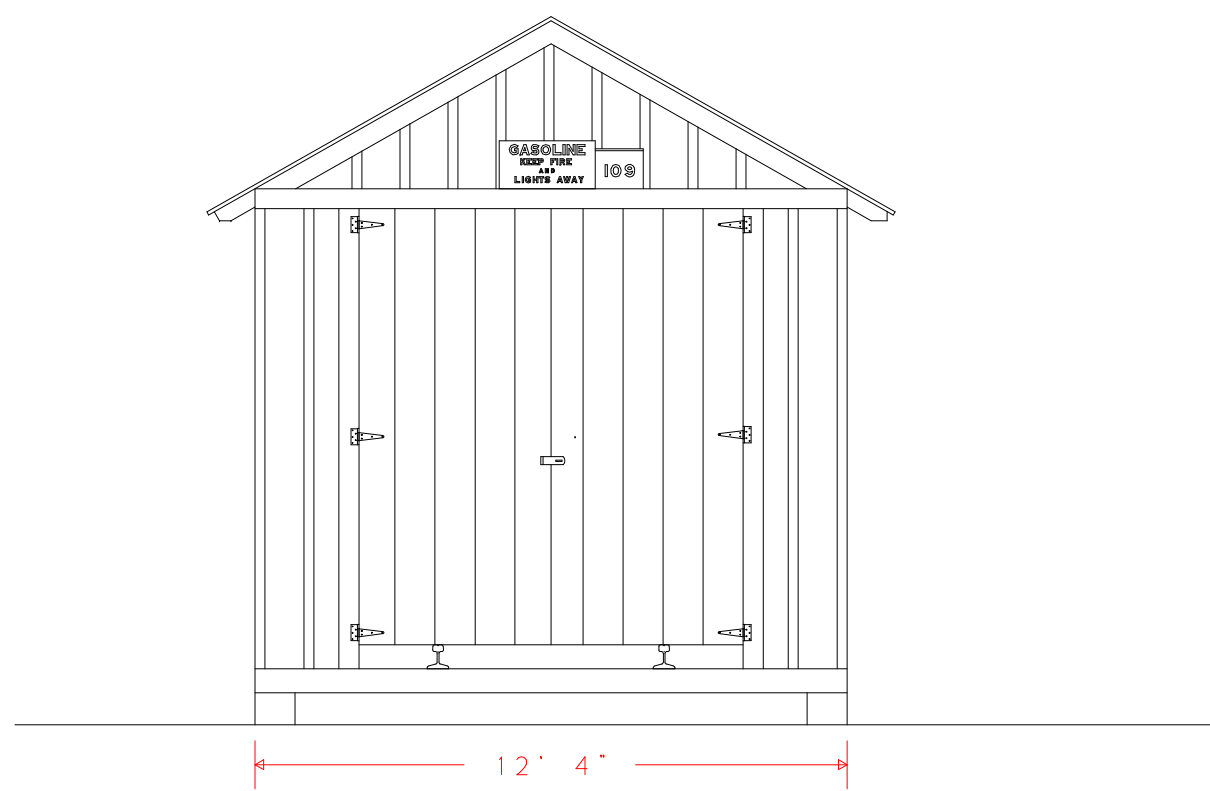
White Letters on Red



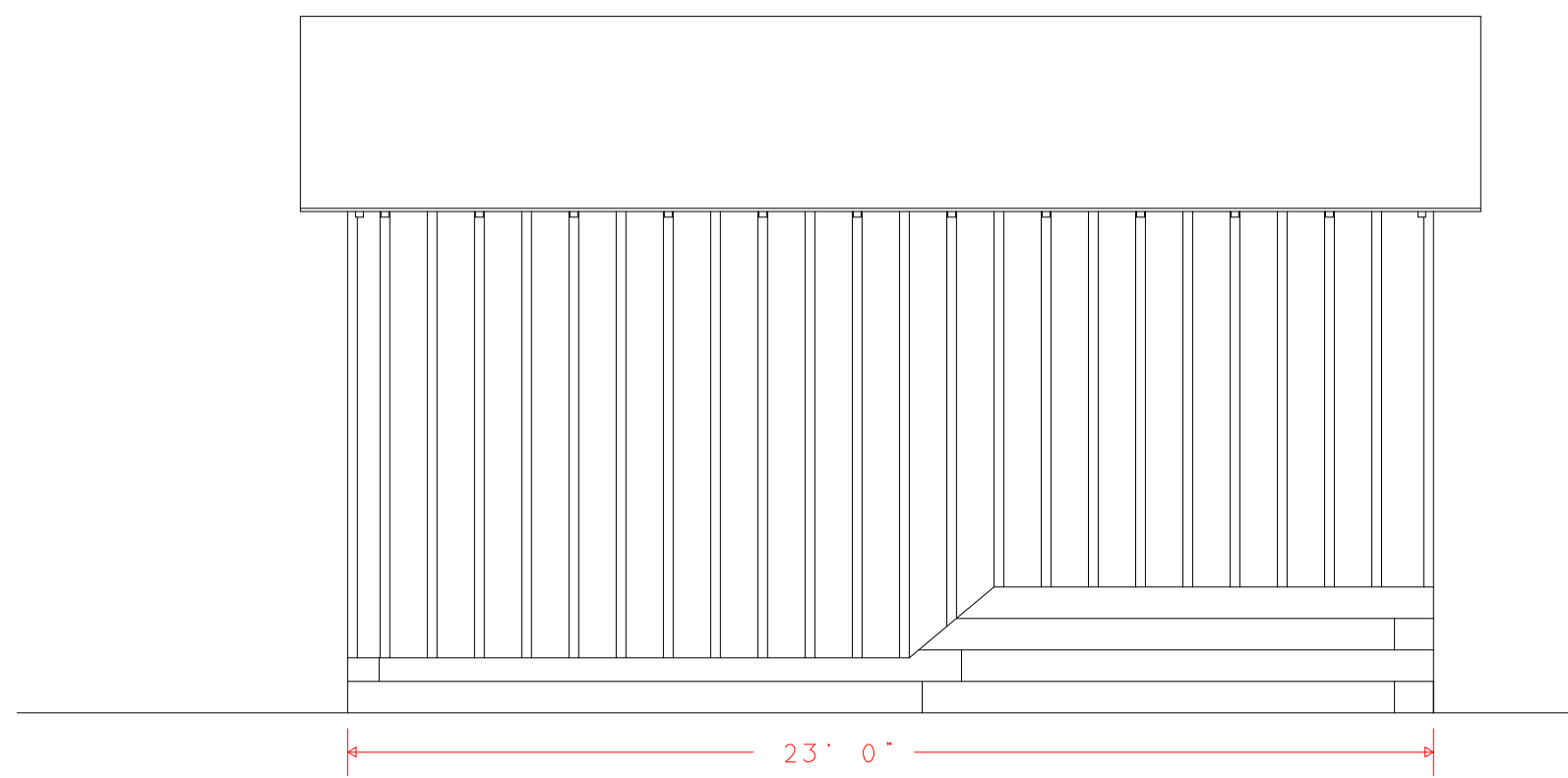
EAST ELEVATION



NORTH ELEVATION



WEST ELEVATION



SOUTH ELEVATION

Structure Built July 1942
Structure Razed Late 1985
Location Indicated is Past July 1945

