

THE CHESAPEAKE AND OHIO RAILWAY COMPANY

LINEMANS TOOL HOUSE  
STRUCTURE NO. 106  
AT  
HINTON

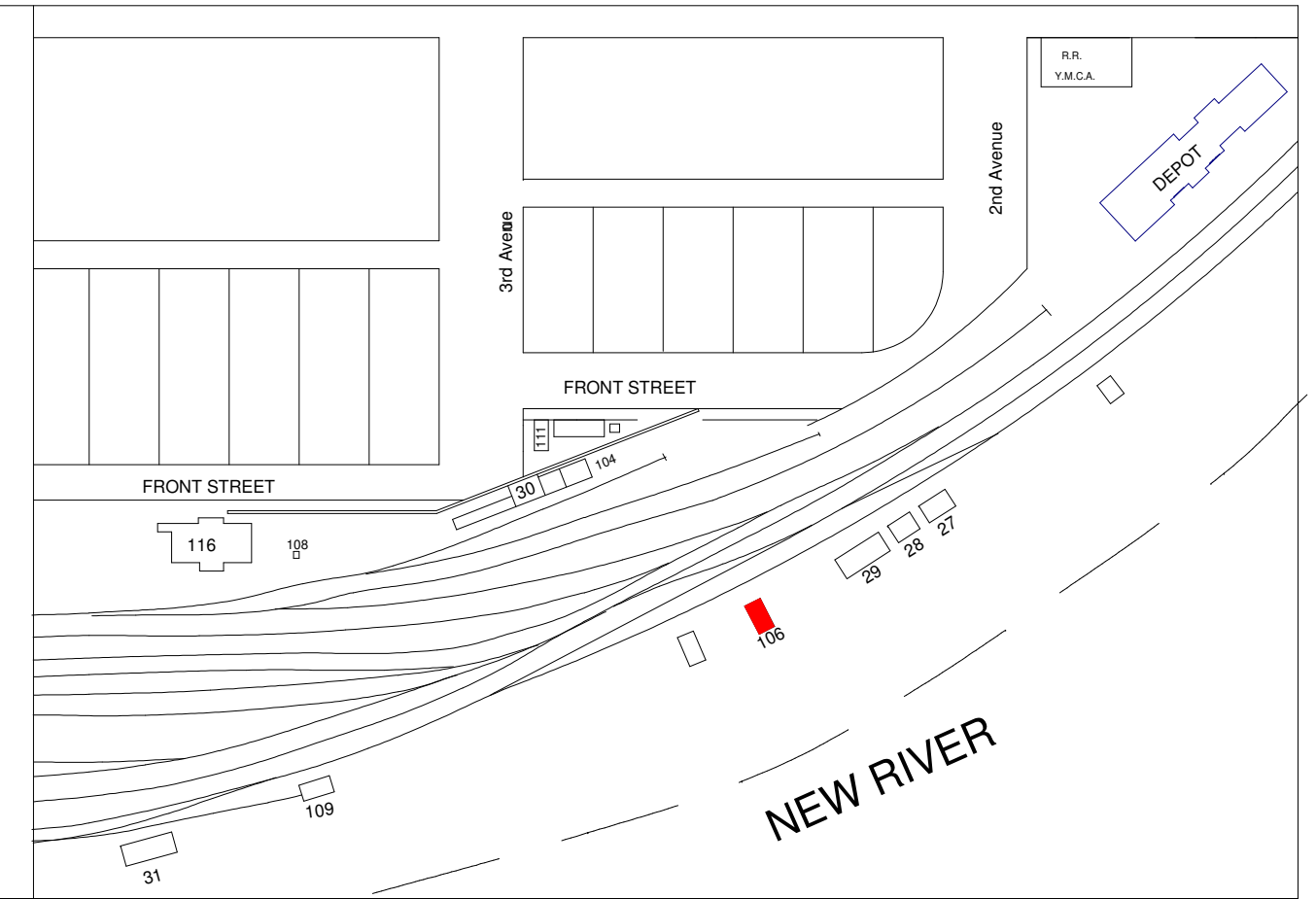
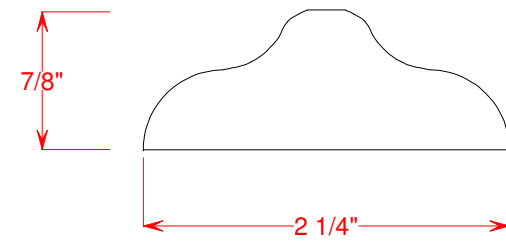
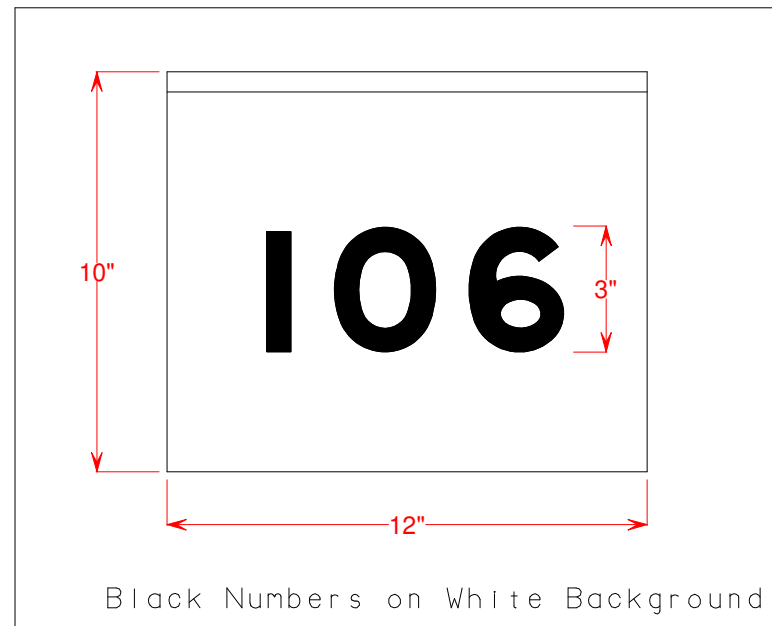
SUMMERS COUNTY WEST VIRGINIA

HINTON DIVISION --- NEW RIVER SUB-DIV.

SCALE: 1/4" = 1' DRAWN BY 5/87  
CIRCA 1946 WILLIAM E. SIMONTON III

Copies of these drawings may be  
made for noncommercial use only

# BATTEN DETAIL (Cross Section)

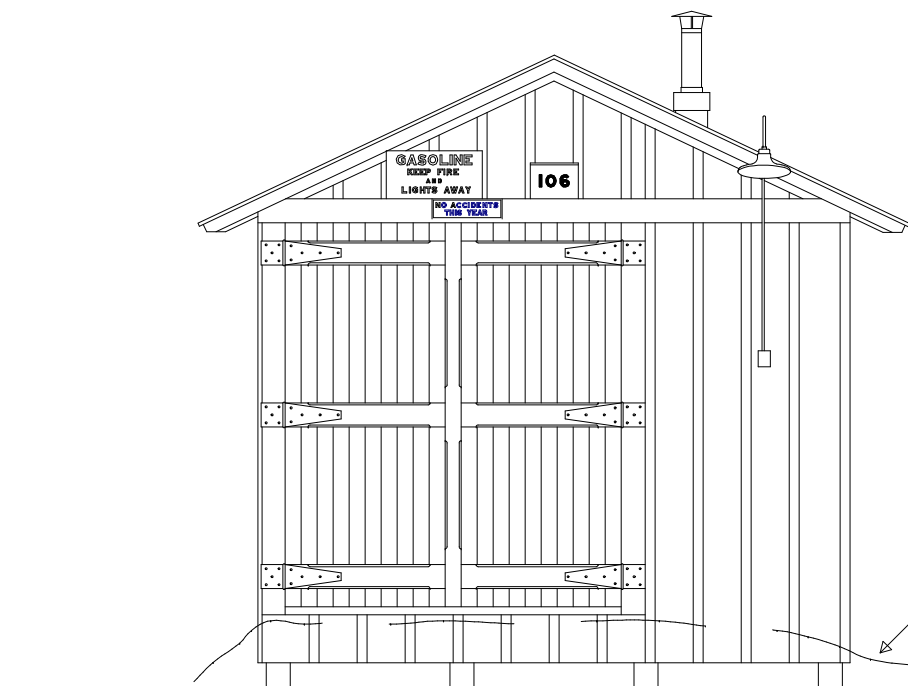


**GASOLINE**  
KEEP FIRE  
AND  
LIGHTS AWAY

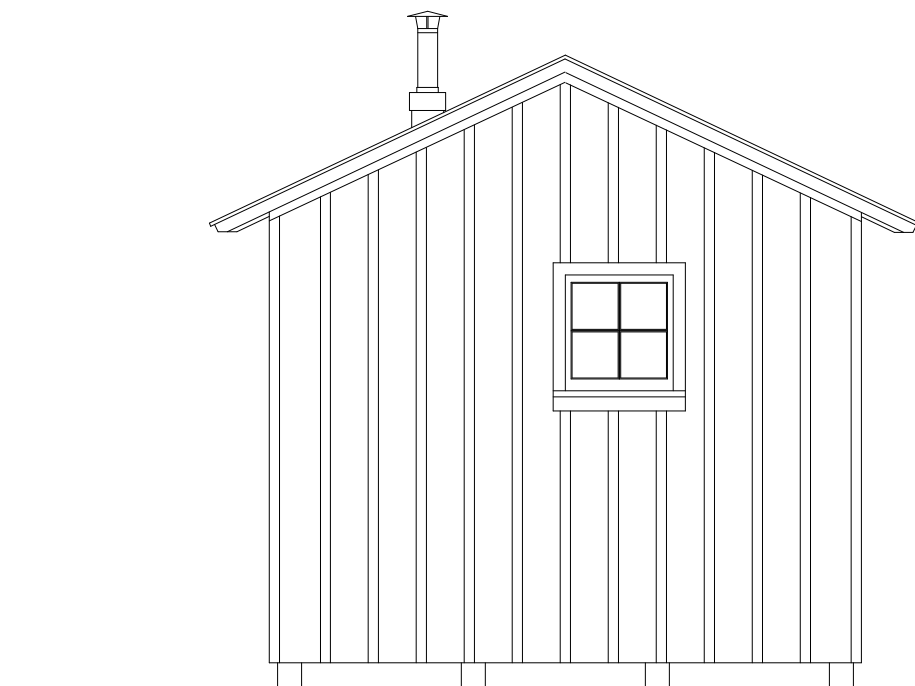
White Letters on Red

**NO ACCIDENTS  
THIS YEAR**

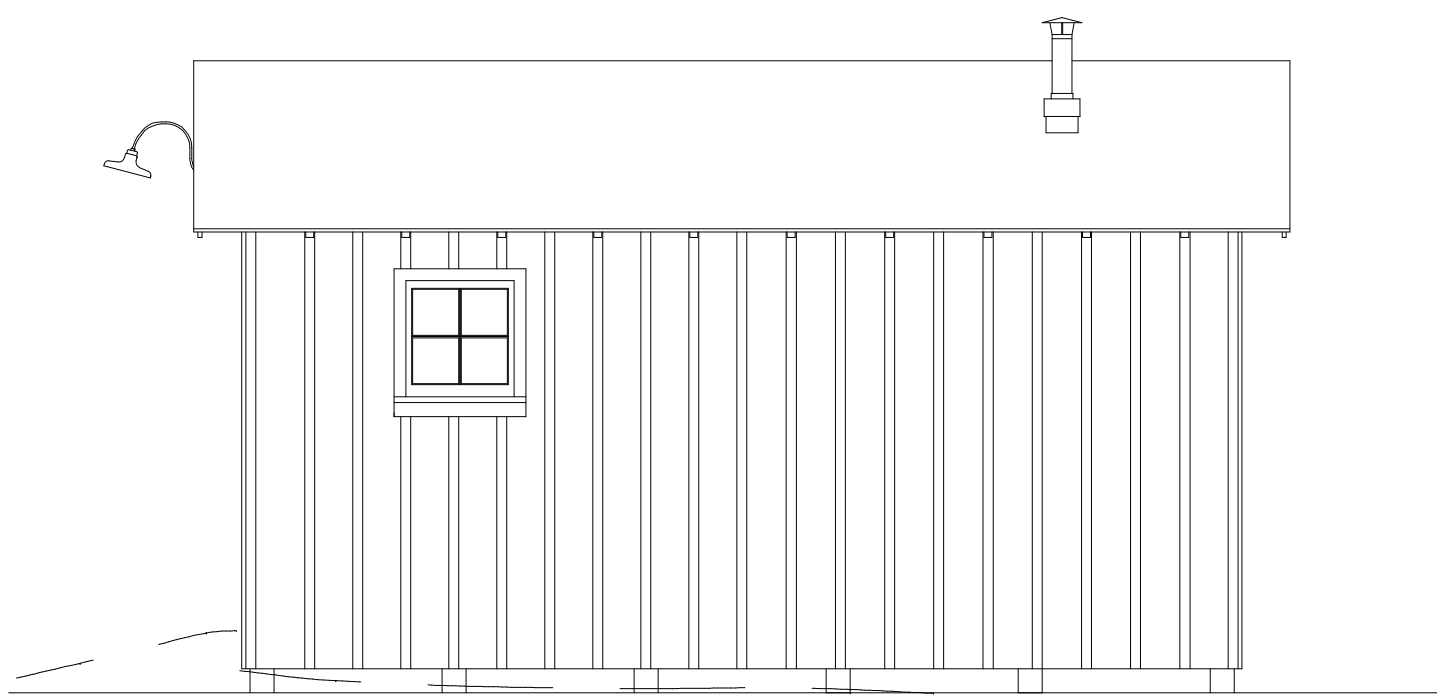
White Lettering on Black



NORTH ELEVATION

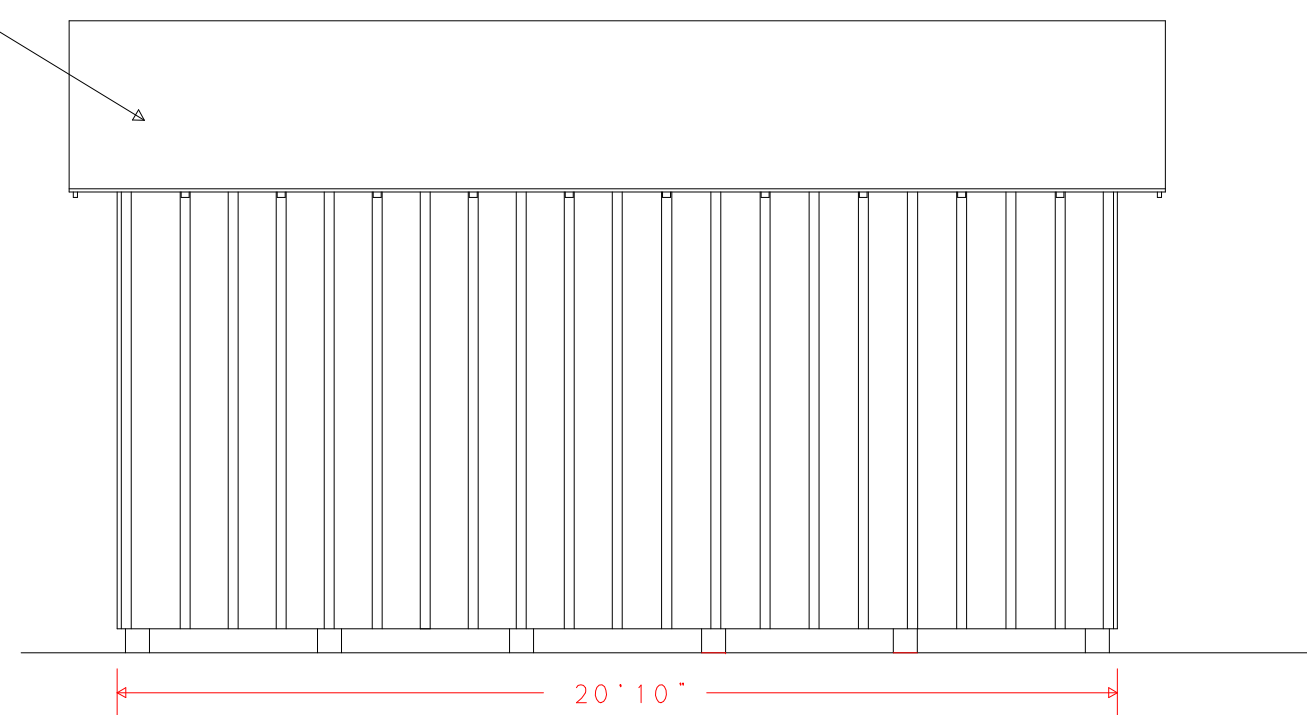


SOUTH ELEVATION



WEST ELEVATION

Bulltup Roof



EAST ELEVATION

Structure Built January 1940  
Structure Razed Late 1985

