

THE CHESAPEAKE AND OHIO RAILWAY COMPANY

MOTOR CAR HOUSE NUMBER 1
STRUCTURE NO. 29
AT
HINTON

SUMMERS COUNTY WEST VIRGINIA

HINTON DIVISION --- NEW RIVER SUB-DIV.

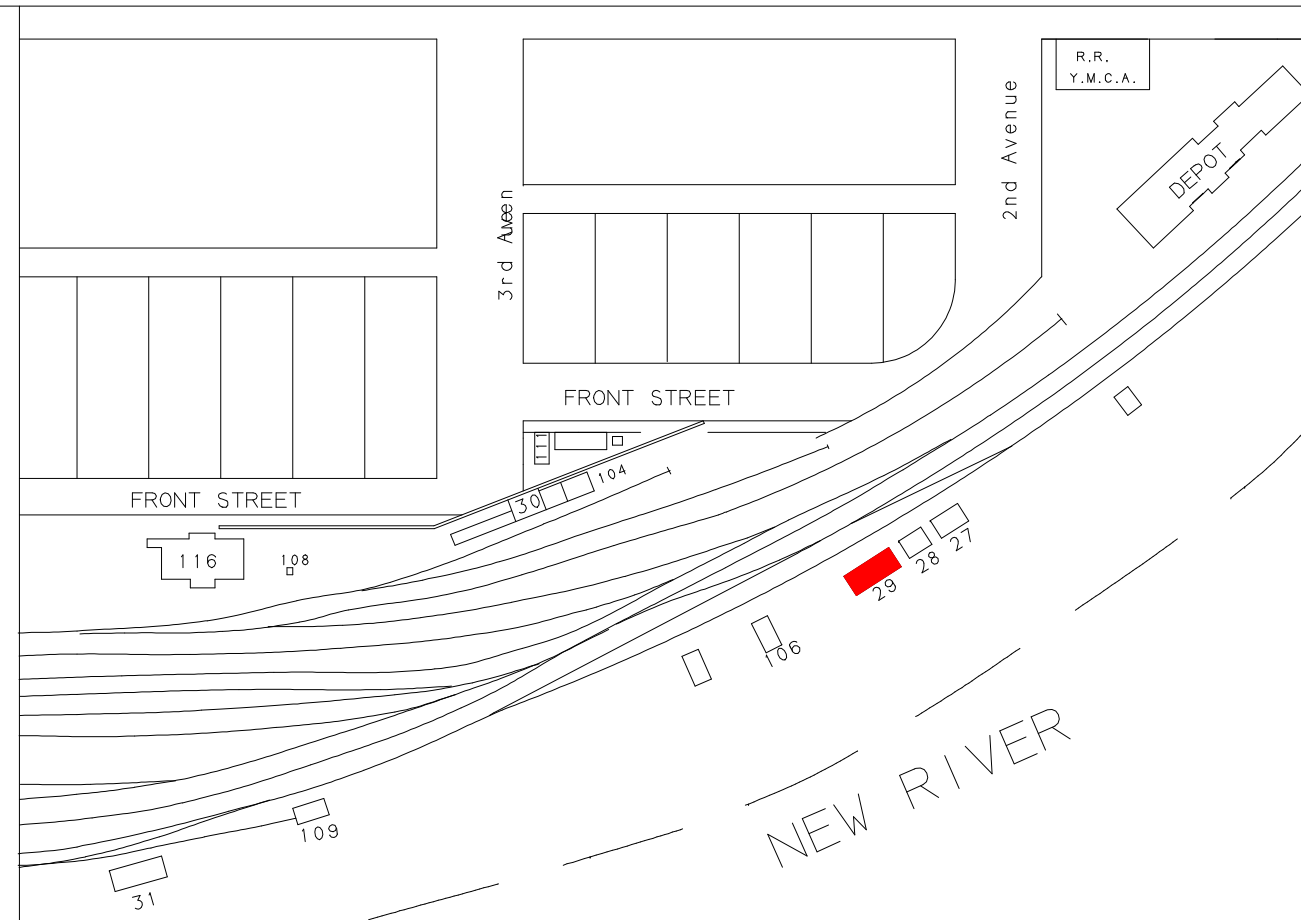
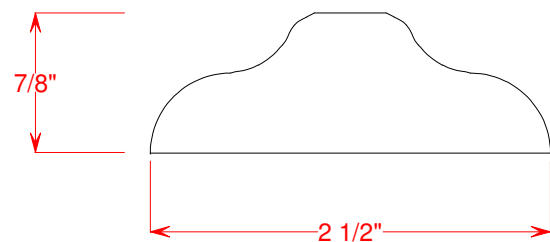
SCALE: 1/4" = 1' DRAWN BY 3/87
CIRCA 1946 WILLIAM E. SIMONTON III

Copies of these drawings may be made for noncommercial use only

NO ACCIDENTS
THIS YEAR

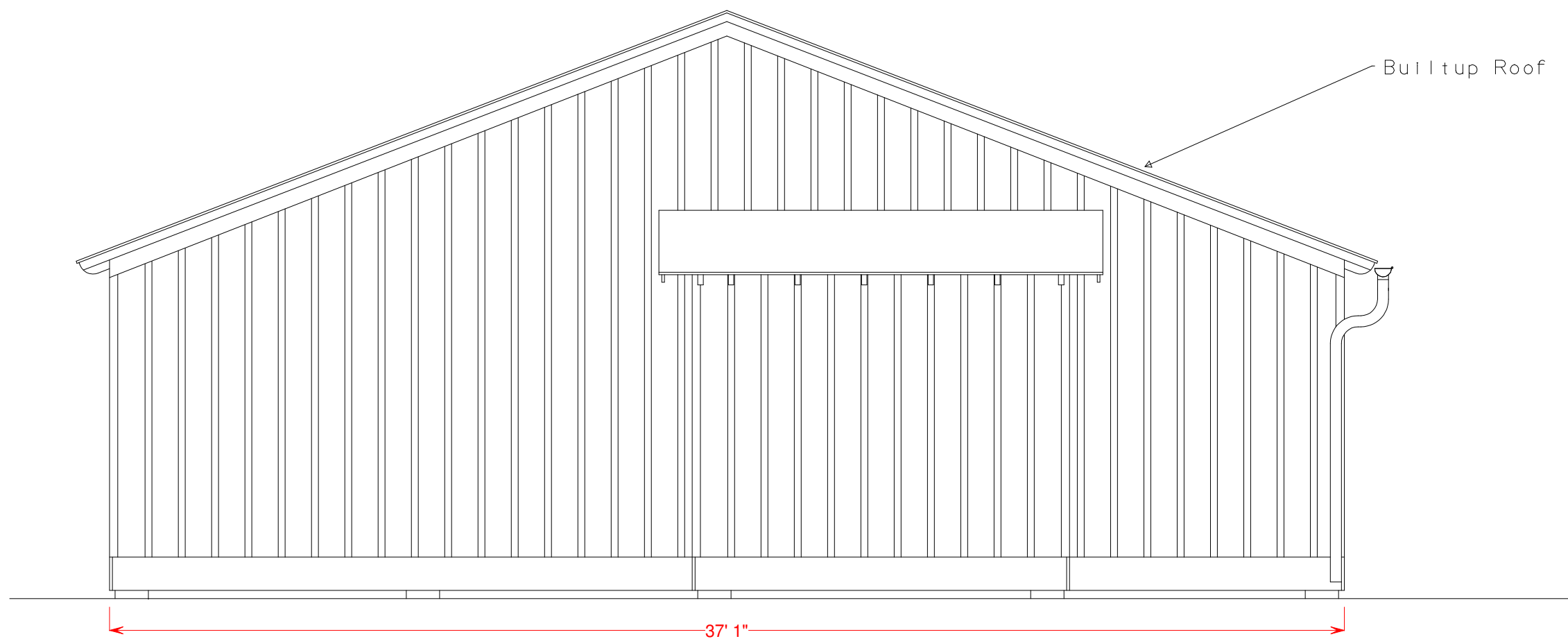
White Lettering on Black
with White Edge Trim

BATTEN DETAIL (Cross Section)

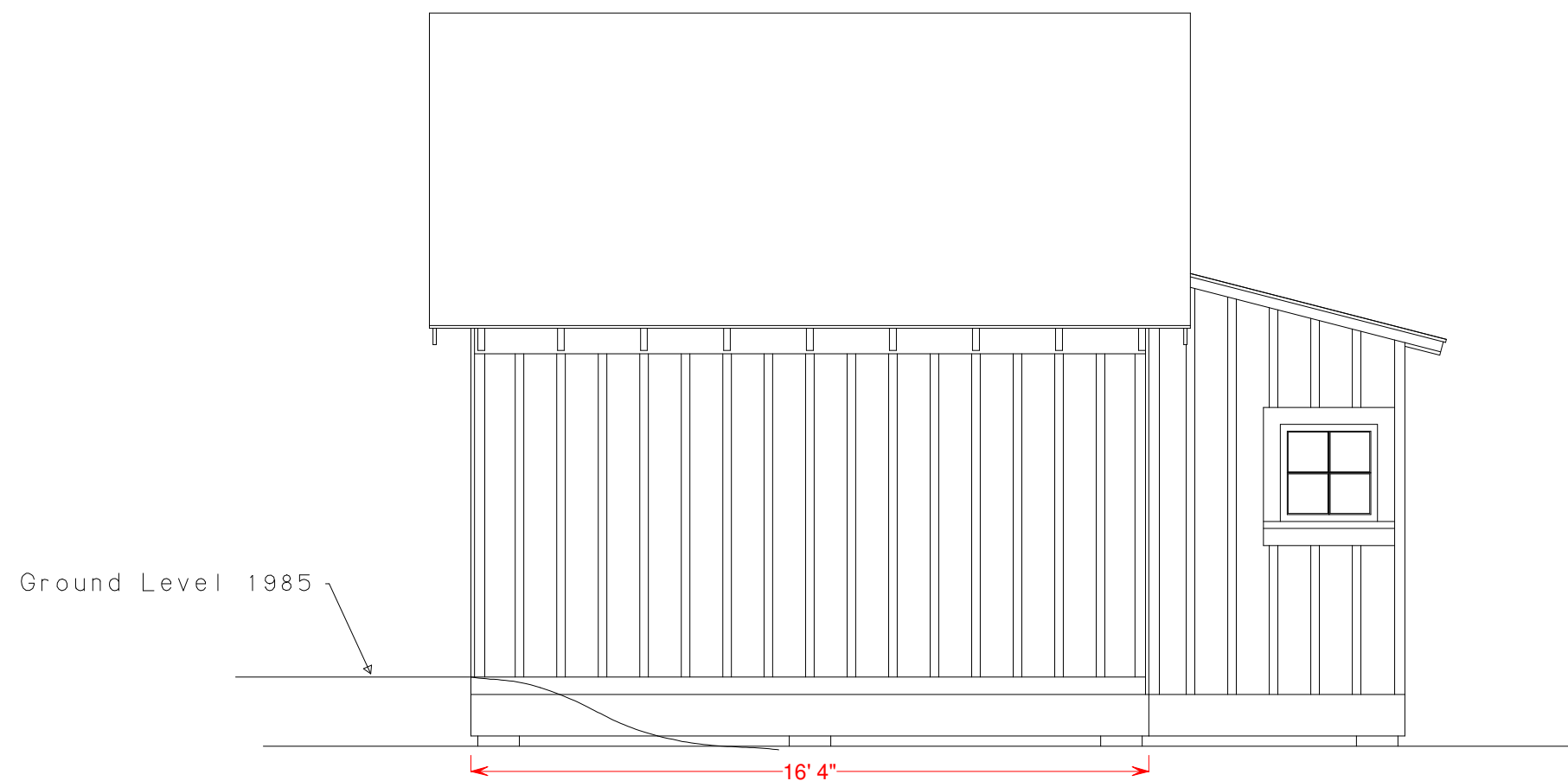


GASOLINE
KEEP FIRE
AND
LIGHTS AWAY

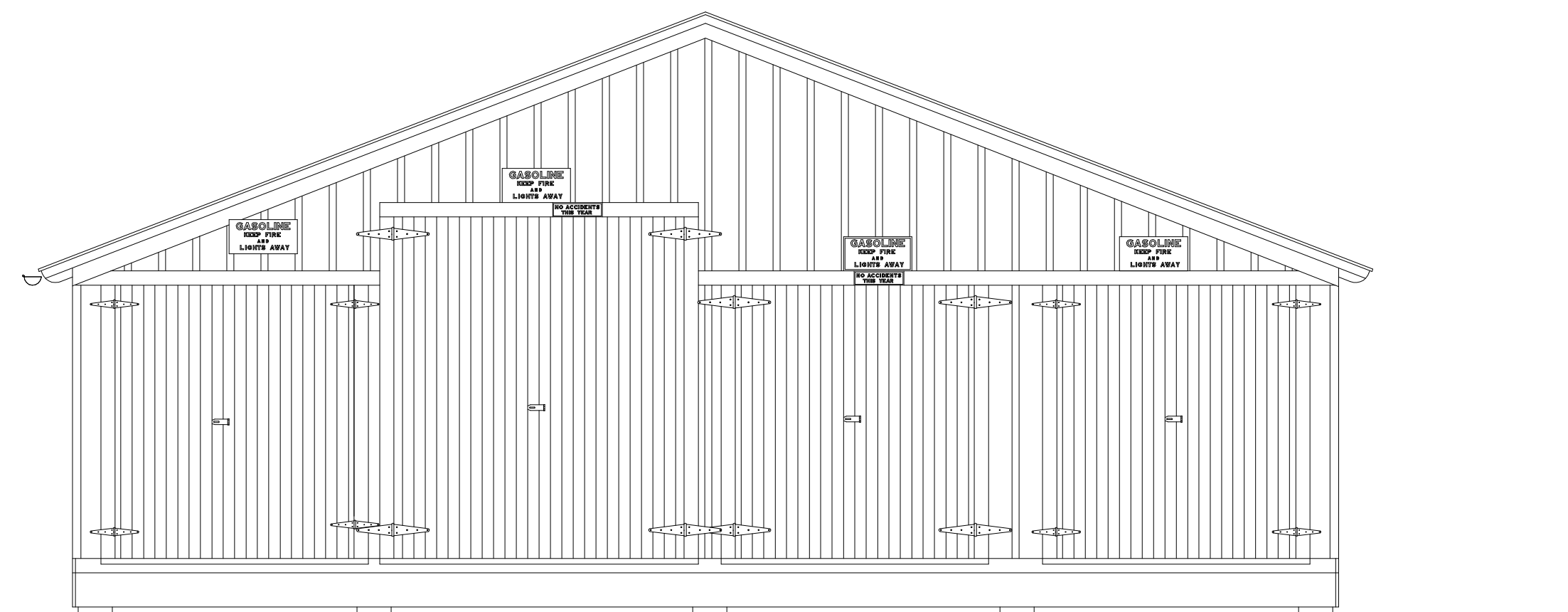
White Lettering on Red
Sign Is 12' X 24'
Note White Border on One Sign



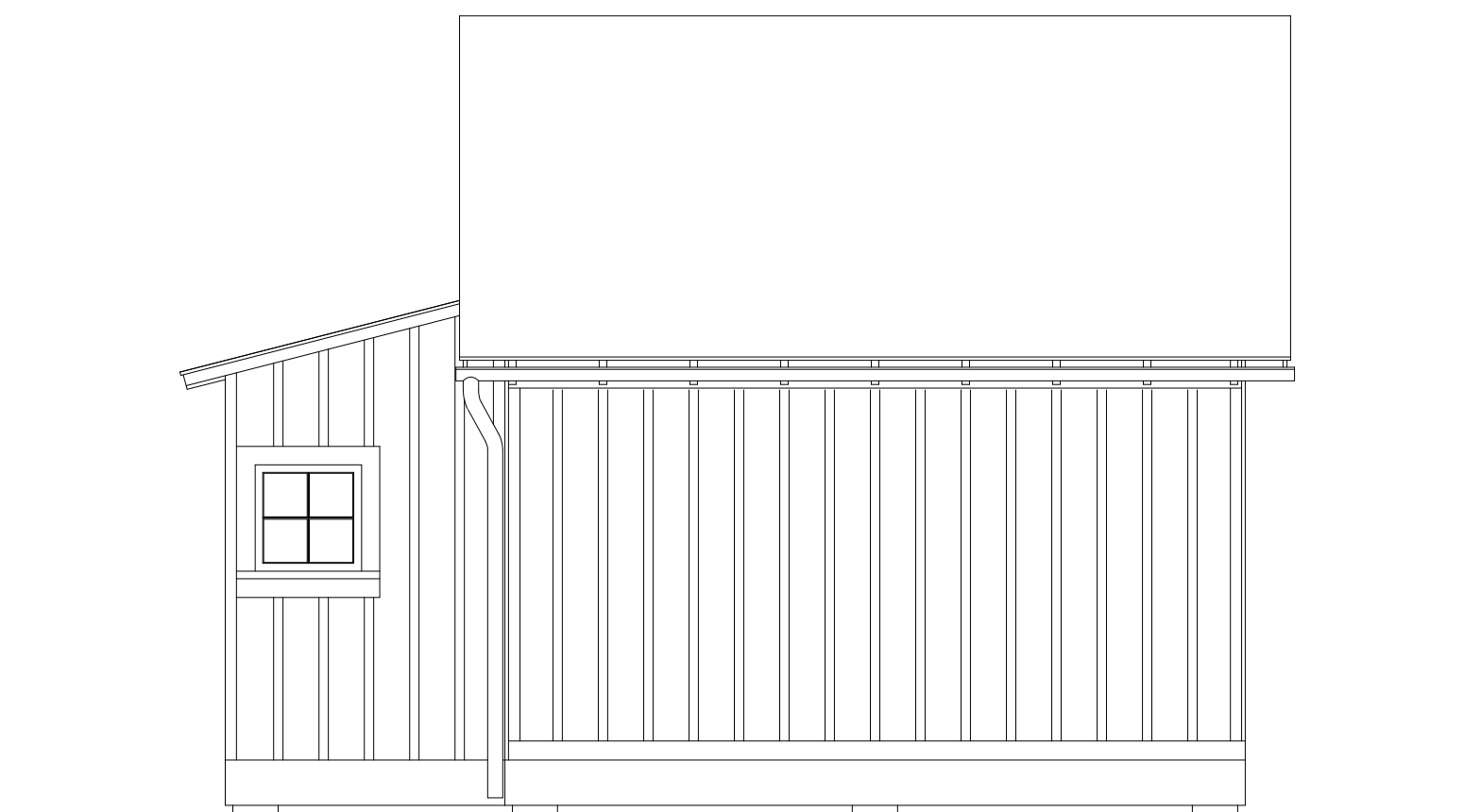
SOUTH ELEVATION



WEST ELEVATION



NORTH ELEVATION



EAST ELEVATION

Structure Built Prior to 1930
Structure Razed Late 1985

The Eval Map Indicates That This Structure
Is 13' From The Centerline of the E.B. Main
Normal Minimum Distance Is 14'

