

THE CHESAPEAKE & OHIO RAILWAY COMPANY

FAIRBANKS, MORSE & COMPANY
800 TON
COALING STATION
AT HINTON

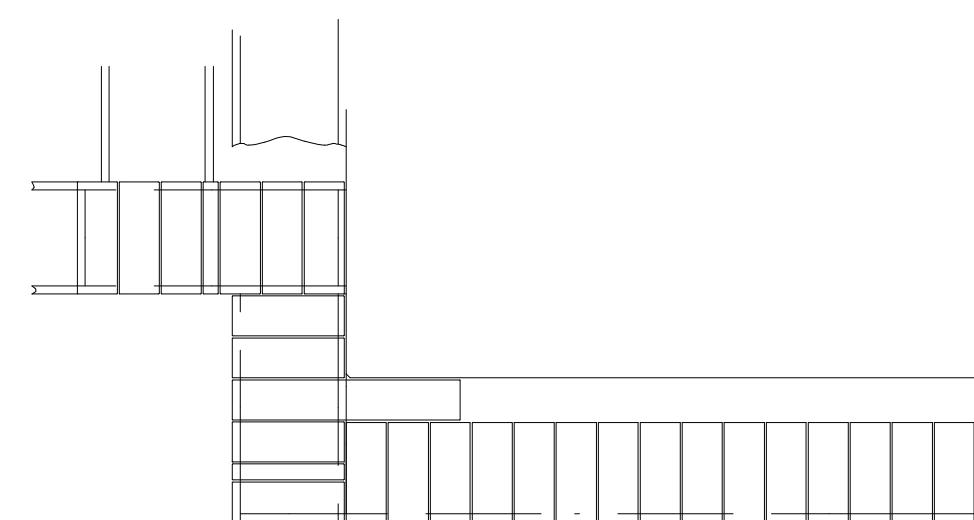
SUMMERS COUNTY - - - WEST VIRGINIA

HINTON DIVISION - - - NEW RIVER SUBDIVISION

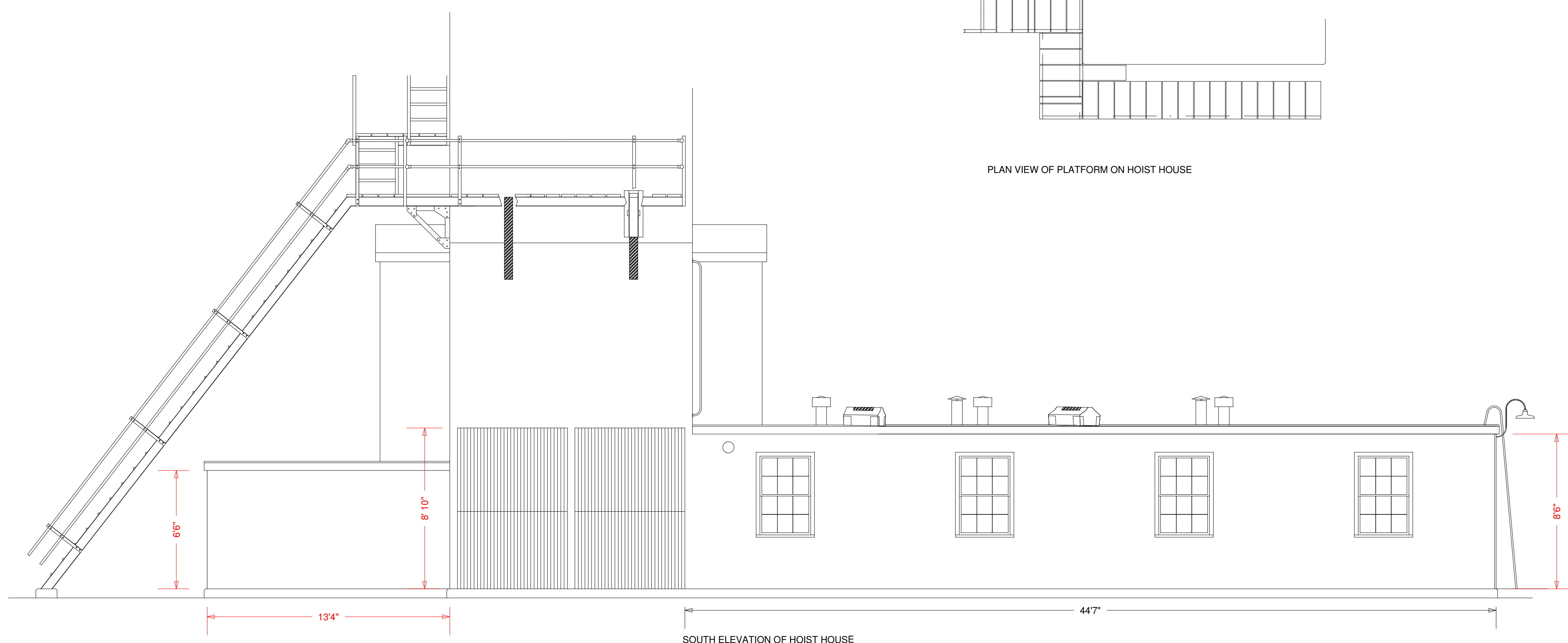
SCALE: 1/4" = 1 FOOT
CIRCA 1946
Page 5 of 6

Copyright
WILLIAM E. SIMONTON III

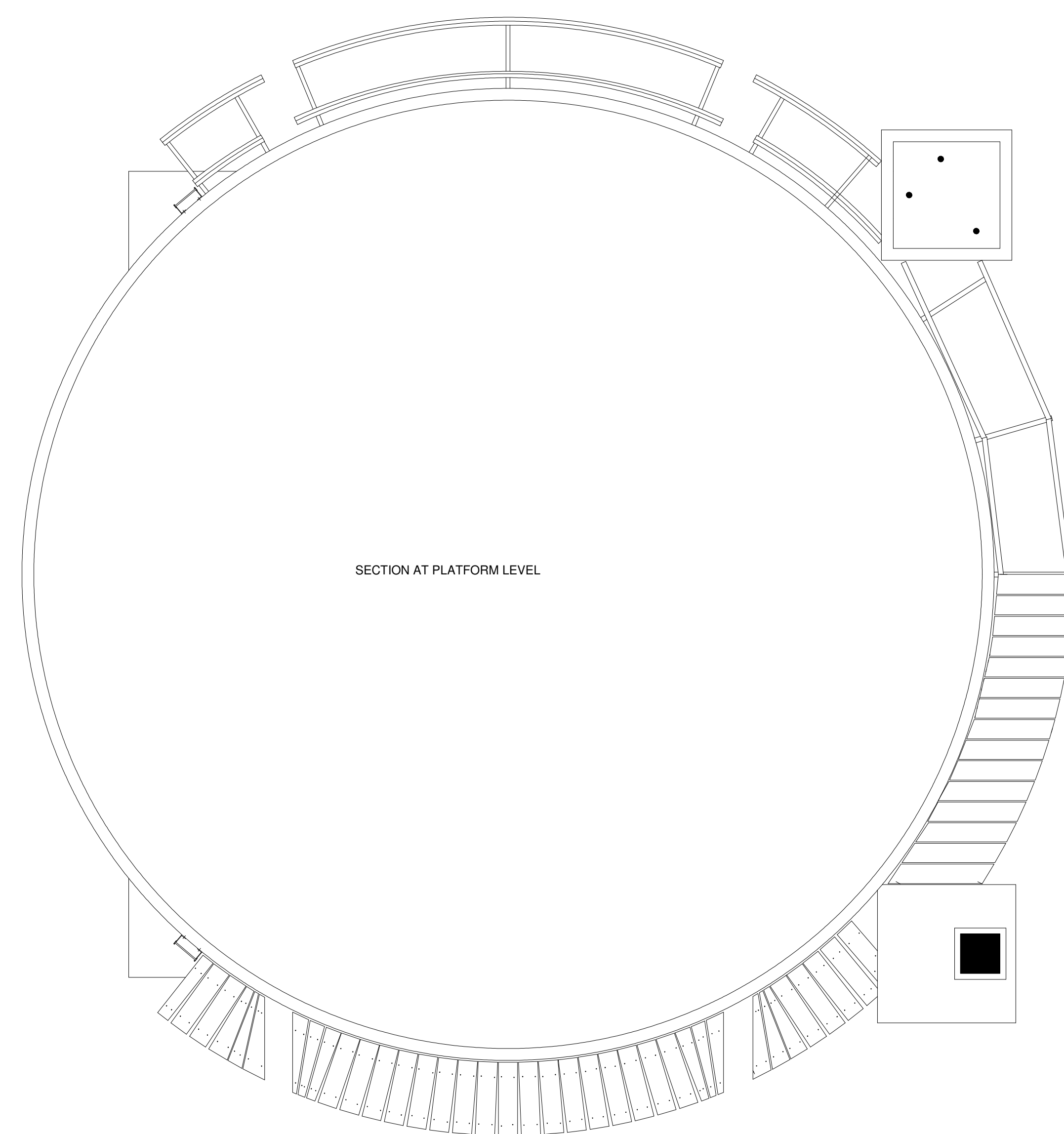
493
©



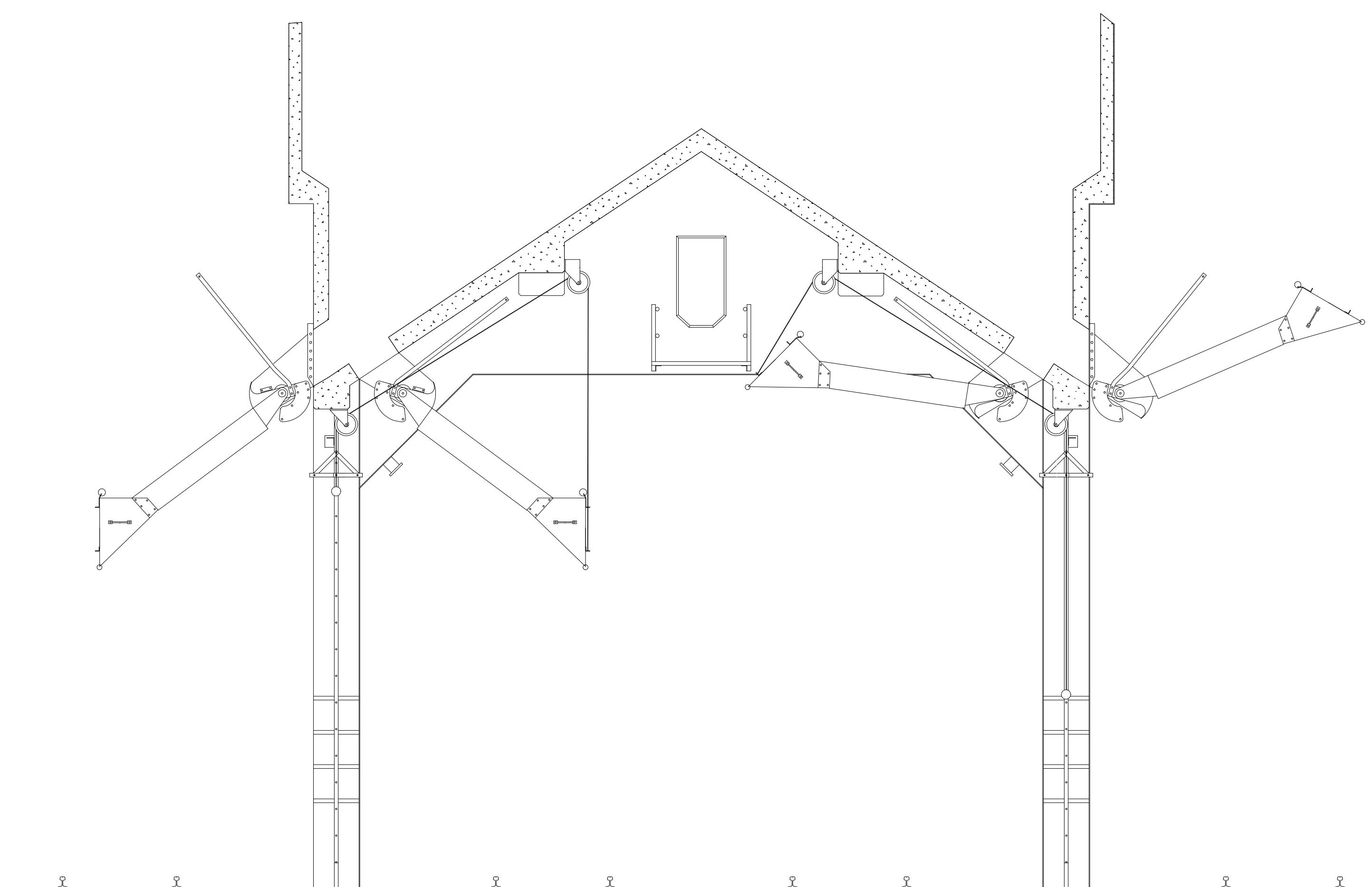
PLAN VIEW OF PLATFORM ON HOIST HOUSE



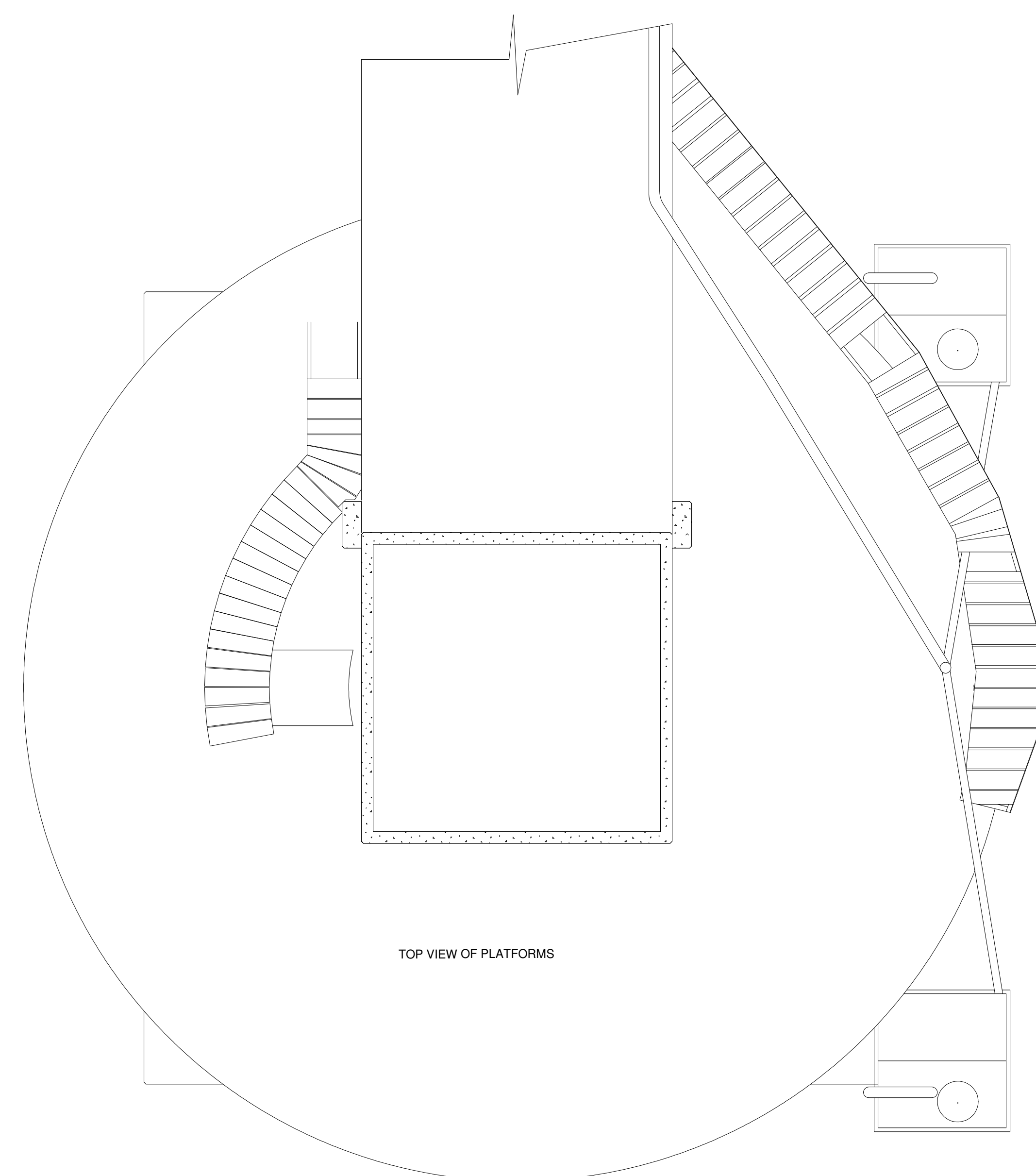
SOUTH ELEVATION OF HOIST HOUSE



SECTION AT PLATFORM LEVEL



SECTION THROUGH EAST BAY OF COAL DOCK



TOP VIEW OF PLATFORMS