

THE CHESAPEAKE AND OHIO RAILWAY COMPANY

SIGNAL & WATER SUPPLY HOUSE
STRUCTURE NO. 28
AT
HINTON

SUMMERS COUNTY WEST VIRGINIA

HINTON DIVISION --- NEW RIVER SUB-DIV.

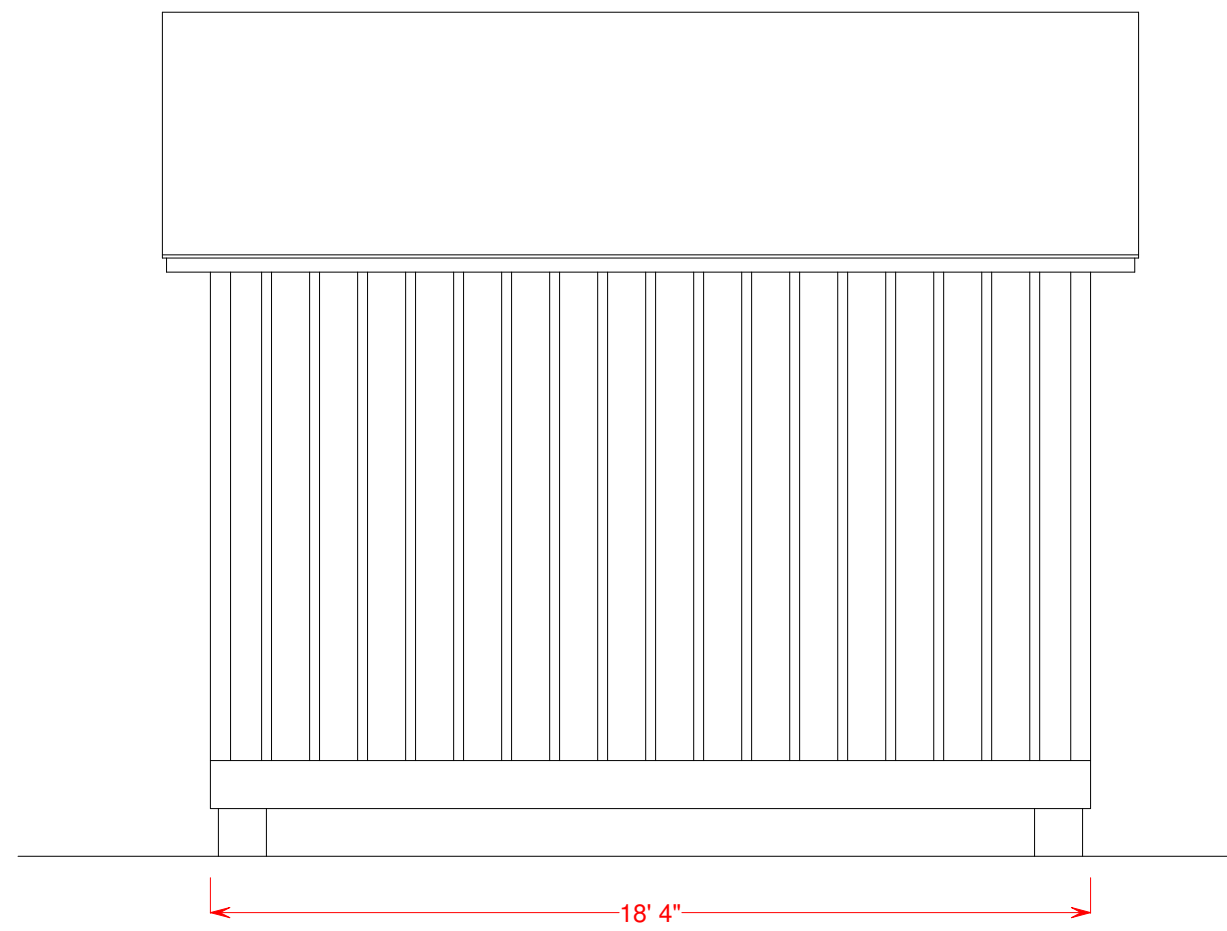
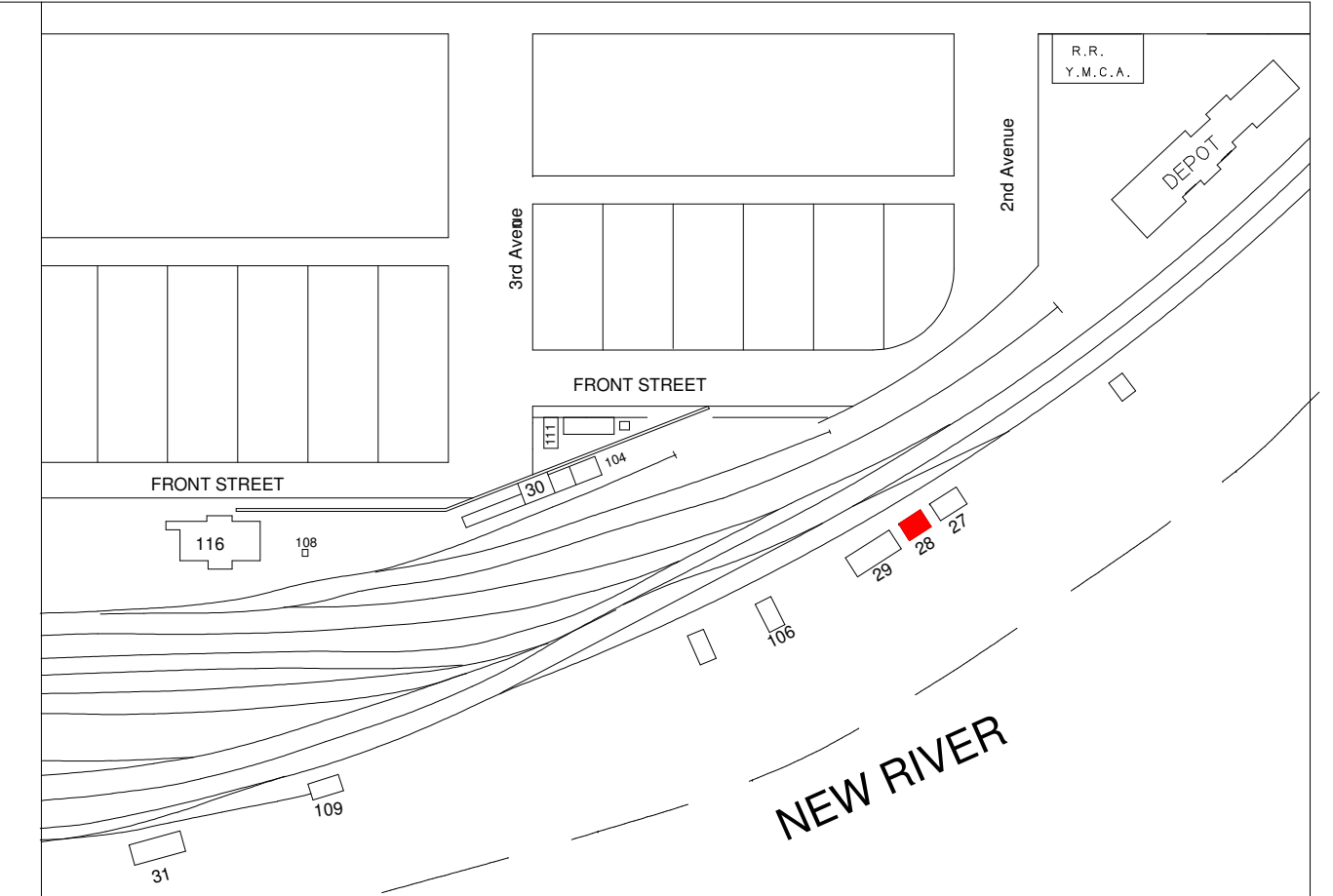
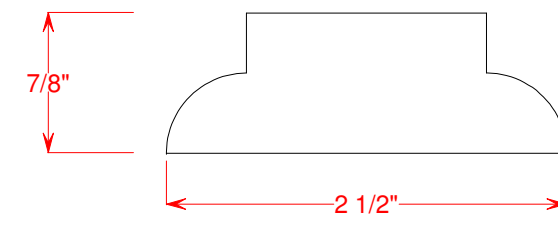
SCALE: 1/4" = 1' DRAWN BY 3/87
CIRCA 1946 WILLIAM E. SIMONTON III

Copies of these drawings may be
made for noncommercial use only

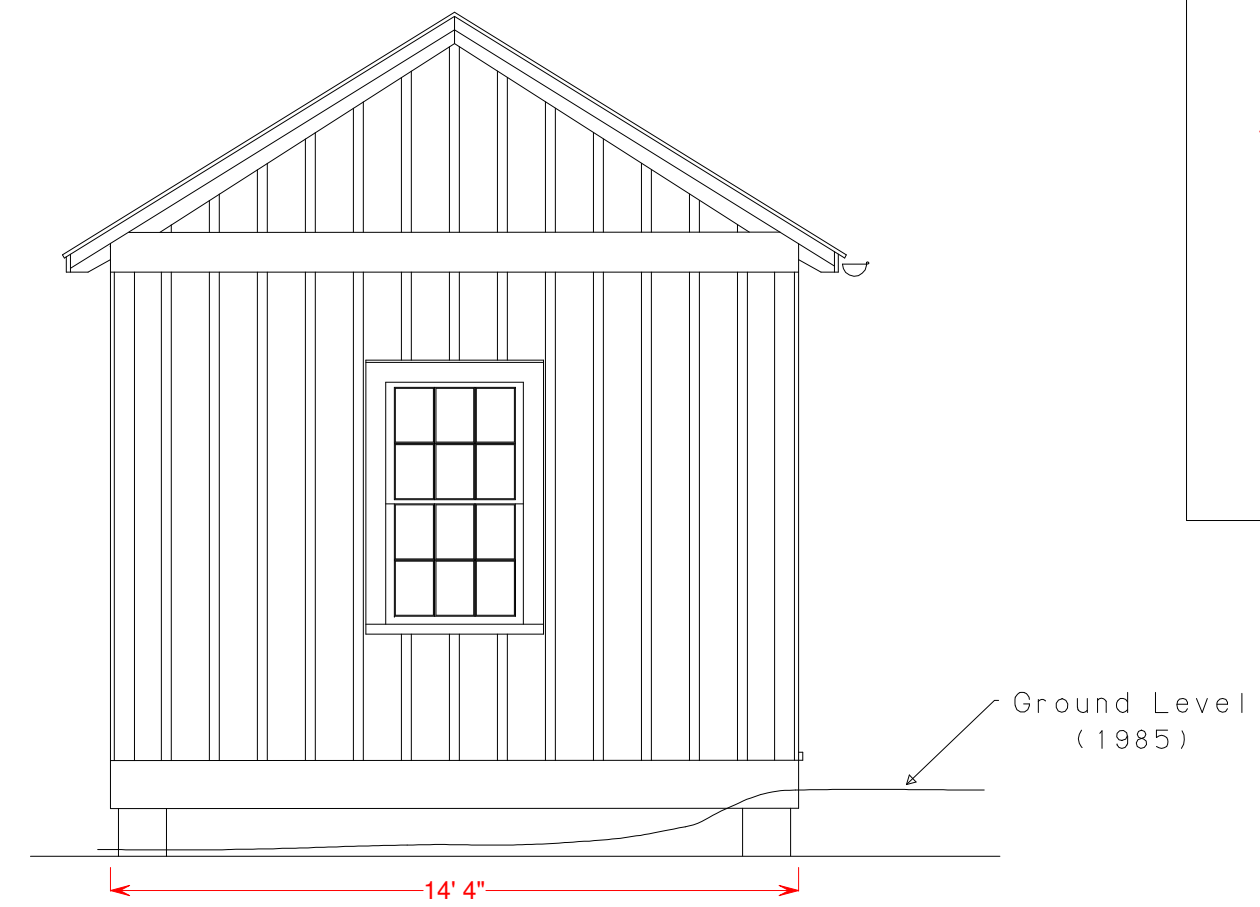
NO ACCIDENTS
THIS YEAR

White Lettering on
Black with White Trim

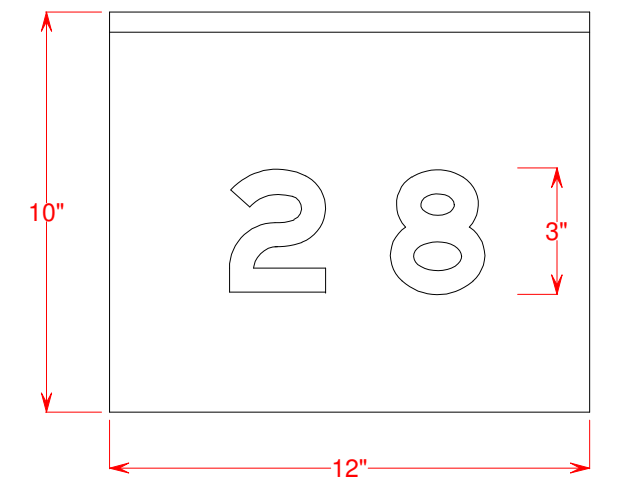
BATTEN DETAIL (Cross Section)



SOUTH ELEVATION



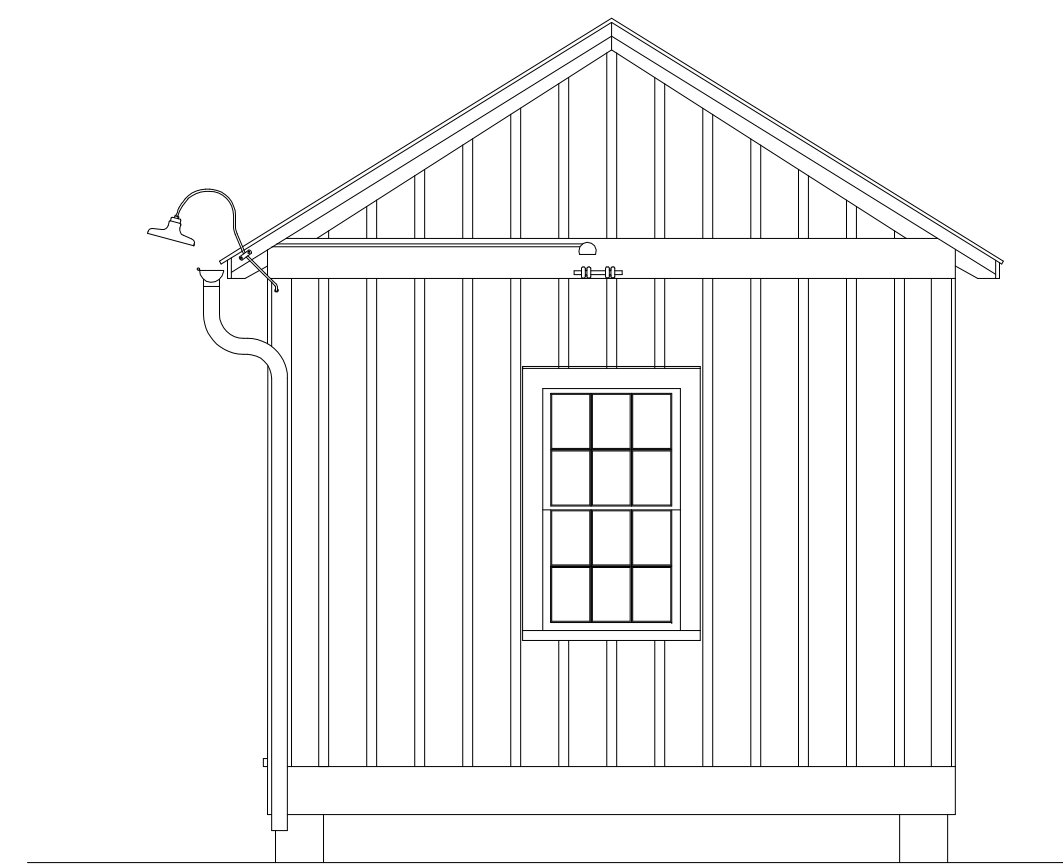
EAST ELEVATION



Black Numbers on White Background



NORTH ELEVATION



WEST ELEVATION

Structure Built Prior to 1930
Structure Razed Late 1985

