

THE CHESAPEAKE AND OHIO RAILWAY COMPANY

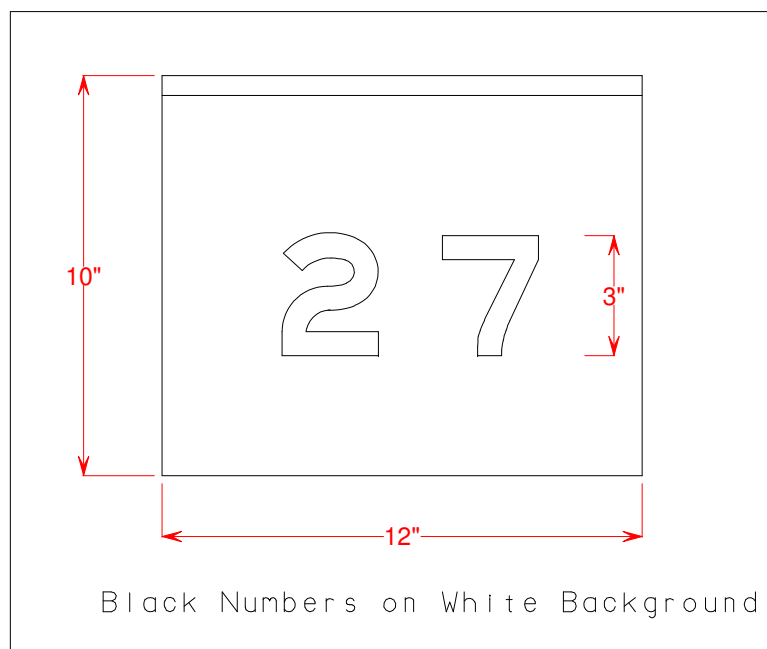
SWITCHMEN 'S SHANTY & FILE ROOM
STRUCTURE NO. 27
AT
HINTON

SUMMERS COUNTY WEST VIRGINIA

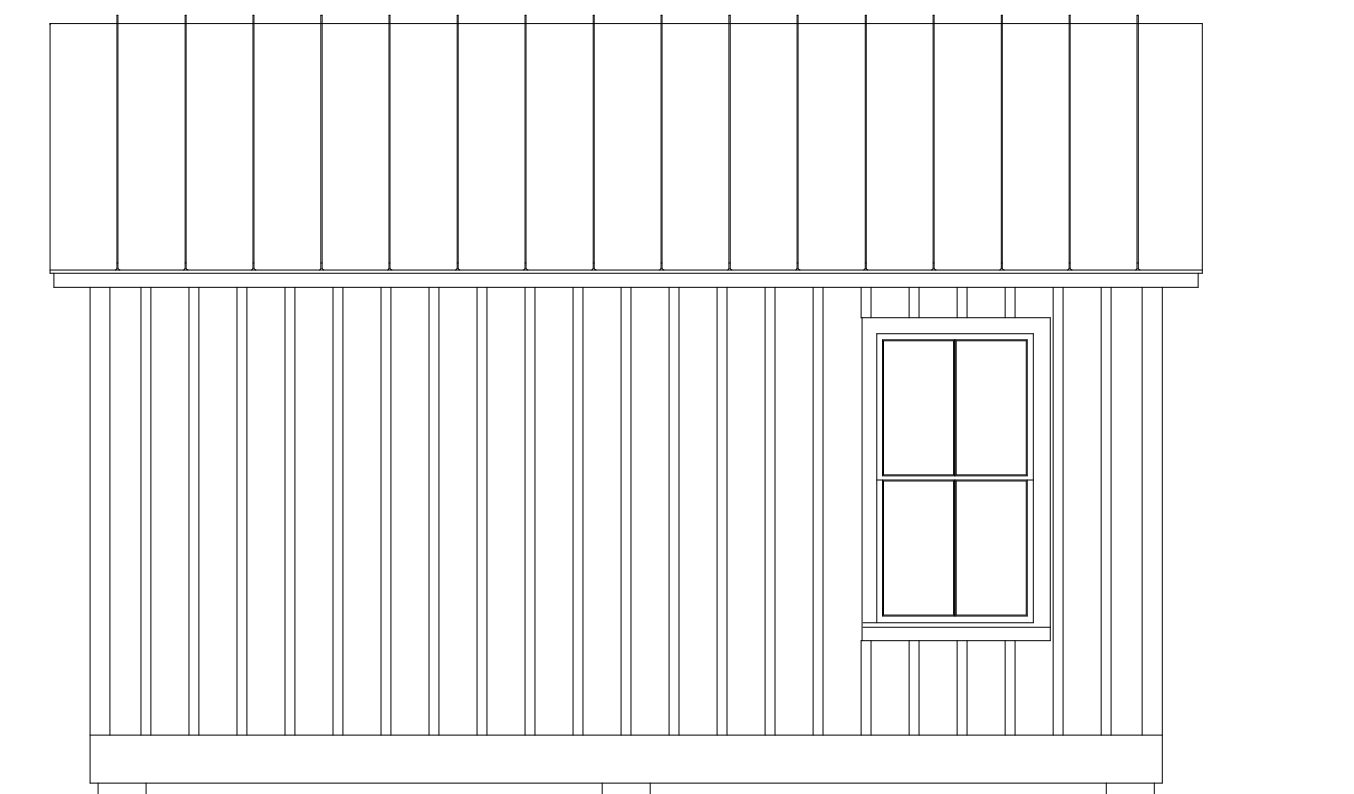
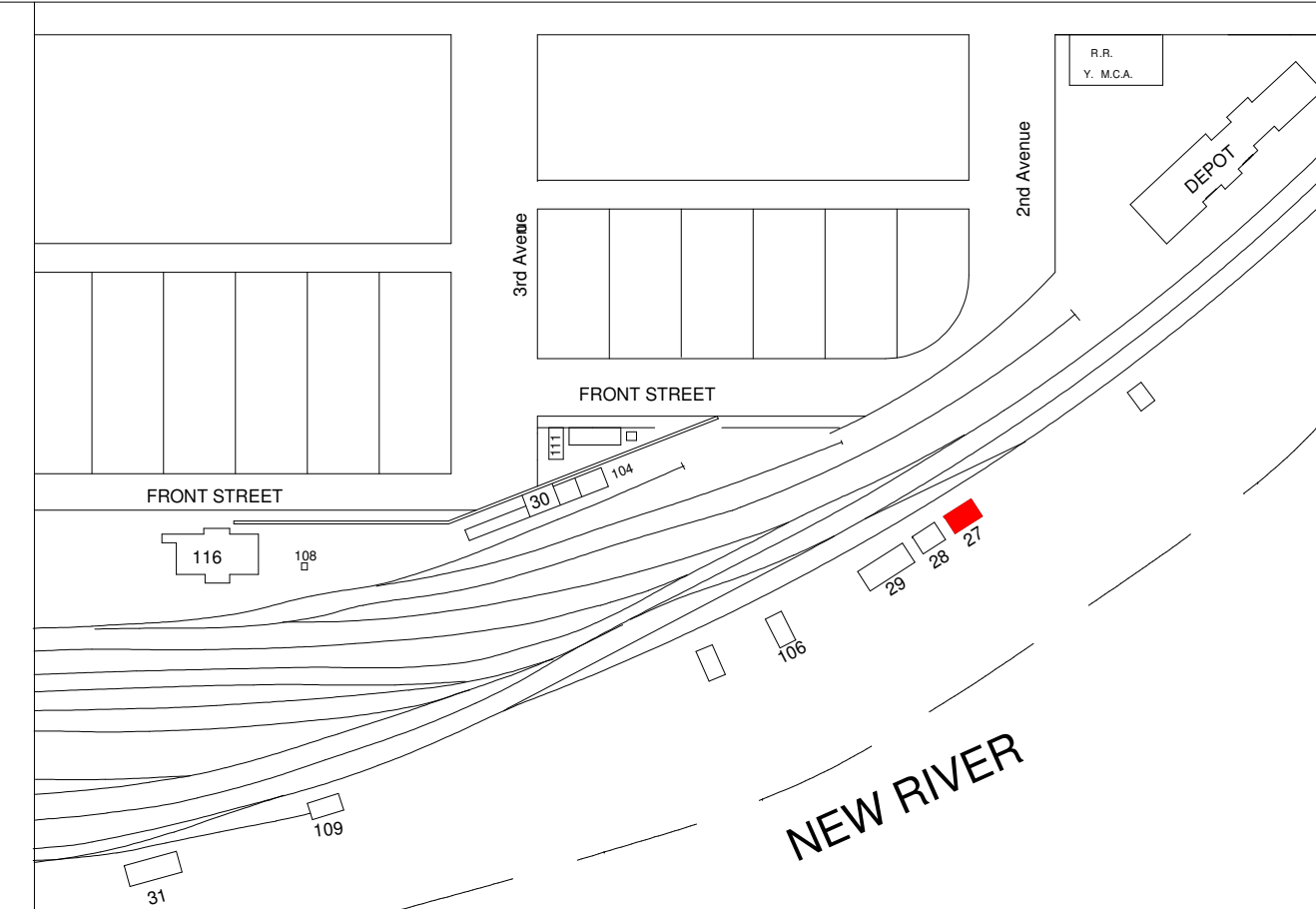
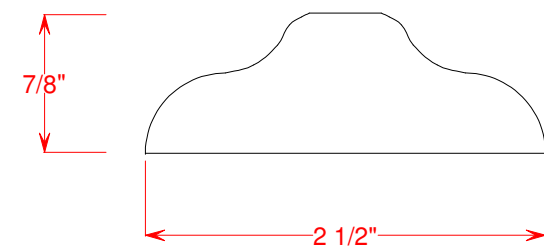
HINTON DIVISION --- NEW RIVER SUB-DIV.

SCALE: 1/4" = 1' DRAWN BY 4/87
CIRCA 1946 WILLIAM E. SIMONTON III

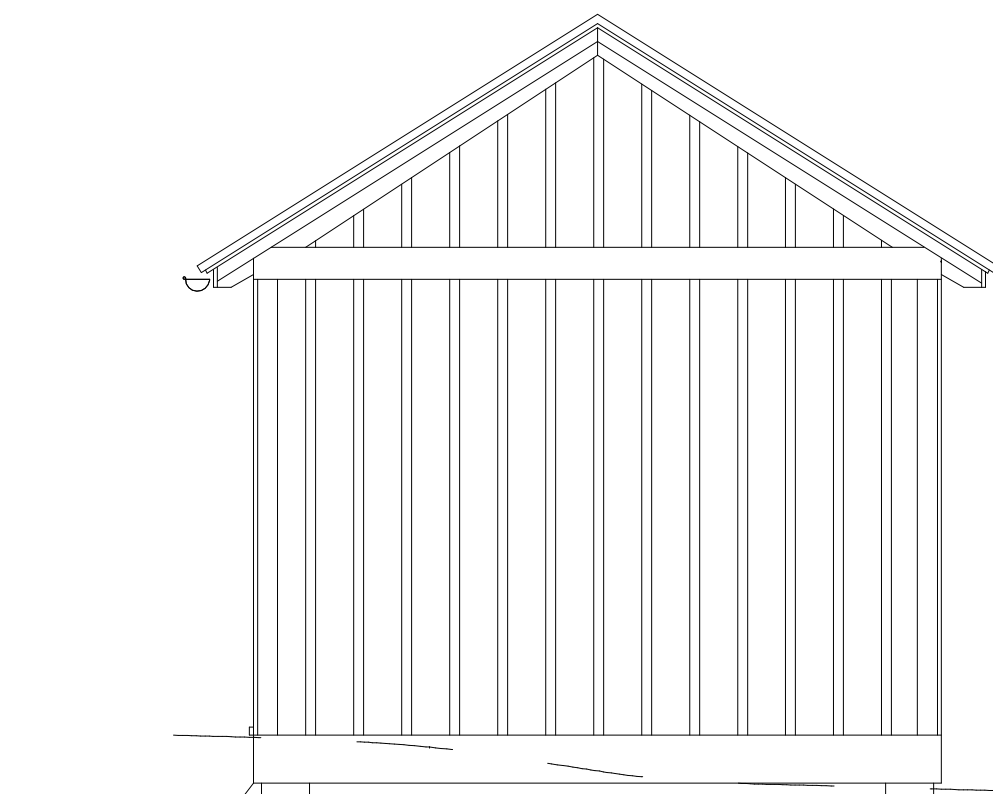
Copies of these drawings may be made for noncommercial use only



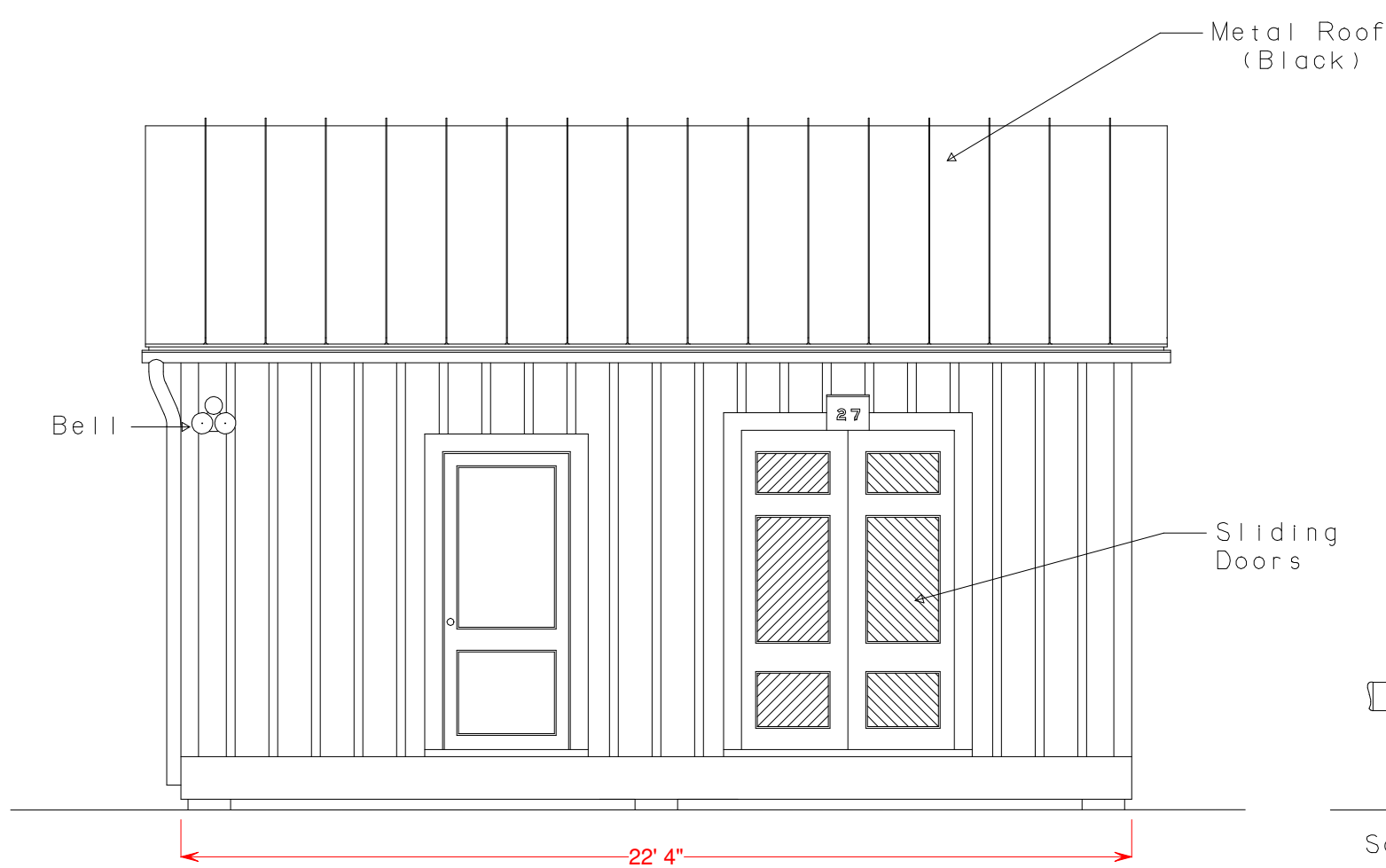
BATTEN DETAIL (Cross Section)



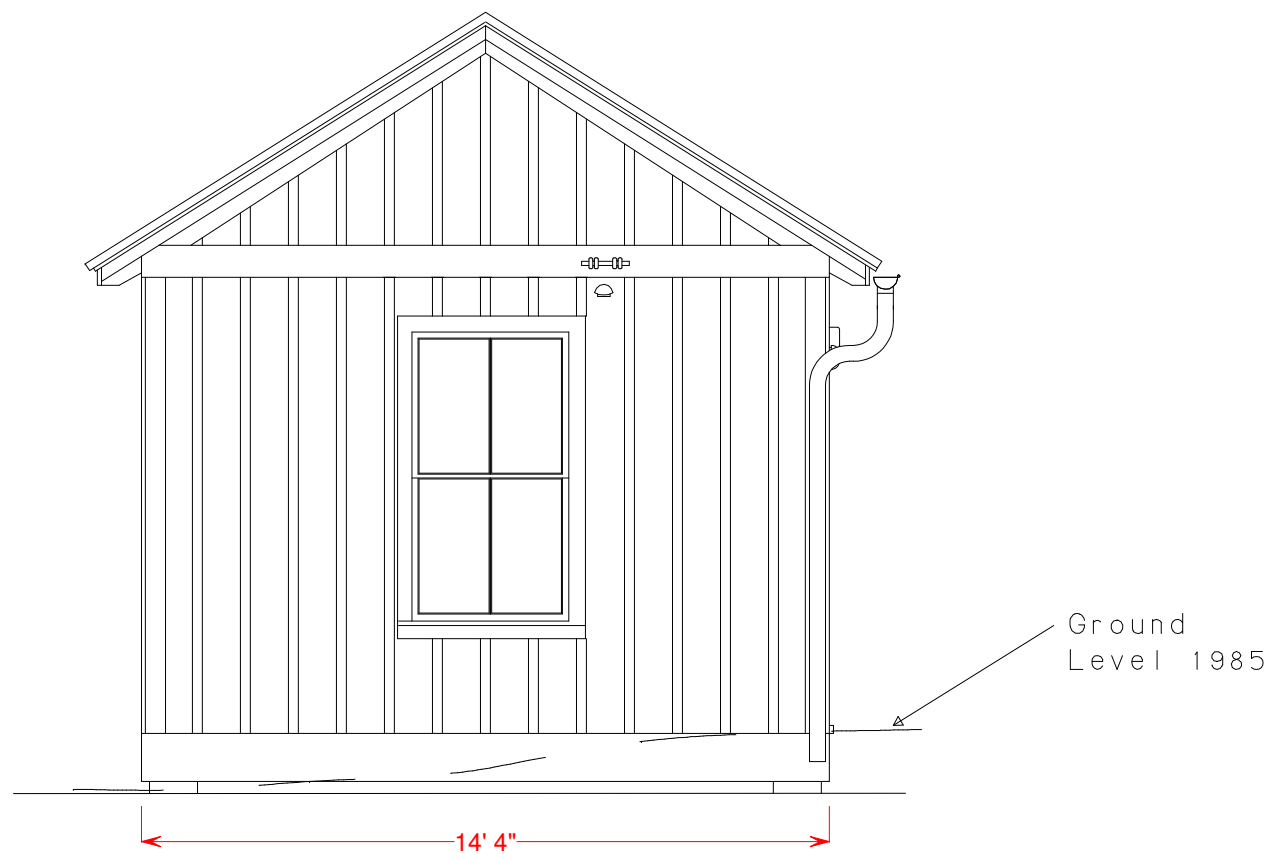
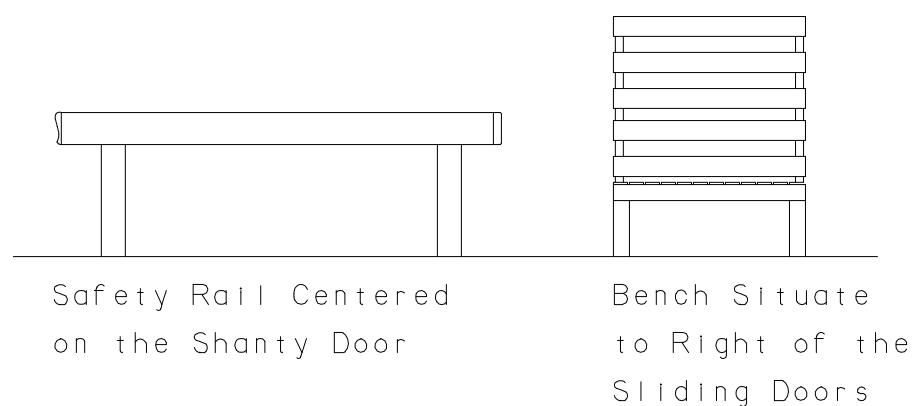
SOUTH ELEVATION



WEST ELEVATION



NORTH ELEVATION



EAST ELEVATION

Structure Built Prior To 1930
Structure Razed Late 1985

