

THE CHESAPEAKE AND OHIO RAILWAY COMPANY

TOOL HOUSE
SECTION 122
AT
HINTON

SUMMERS COUNTY WEST VIRGINIA

HINTON DIVISION --- NEW RIVER SUB-DIV.

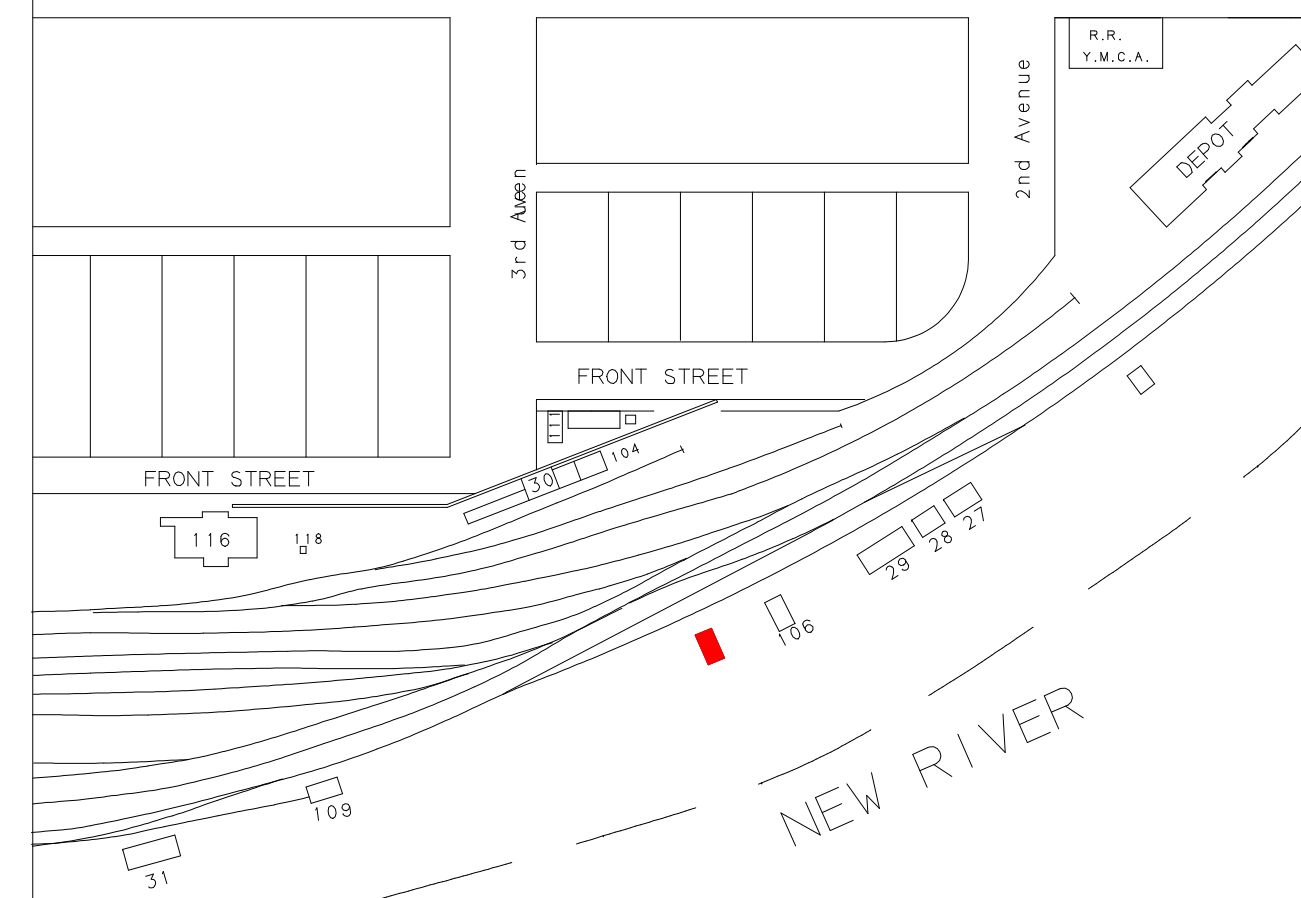
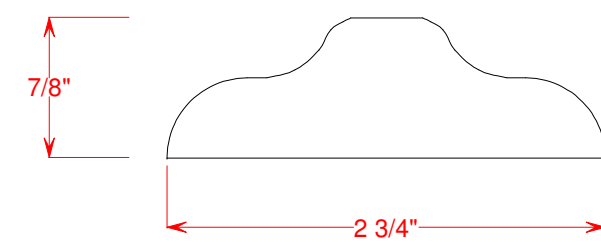
SCALE: 1/4" = 1' DRAWN BY 4/87
CIRCA 1946 WILLIAM E. SIMONTON III

Copies of these drawings may be made for noncommercial use only

NO ACCIDENTS
THIS YEAR

White Lettering on Black with White Trim

BATTEN DETAIL (Cross Section)

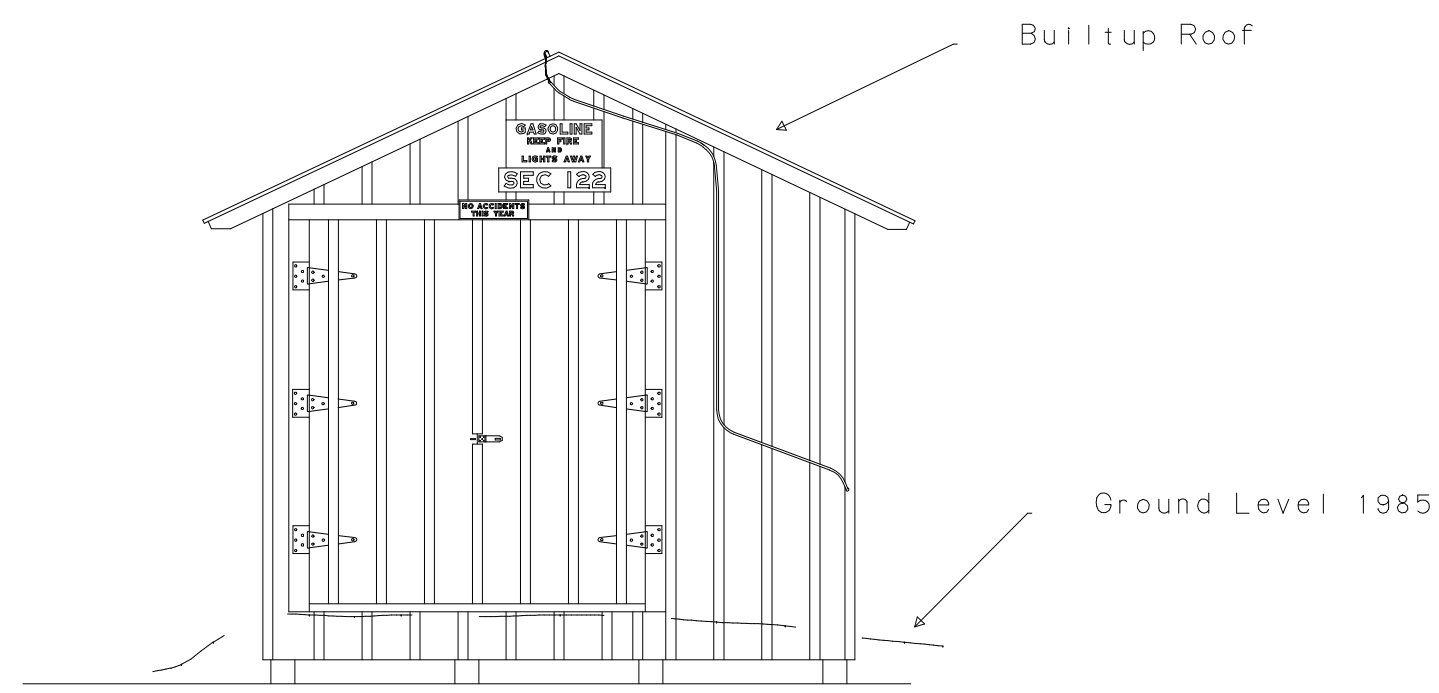


SEC 122

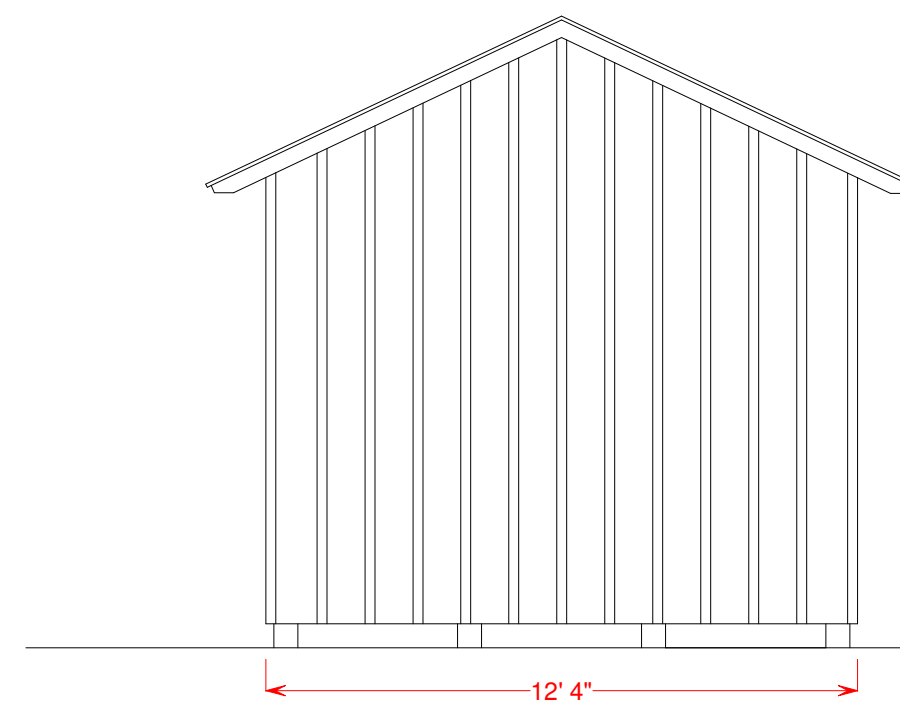
Black Lettering on White Background

GASOLINE
KEEP FIRE
AND
LIGHTS AWAY

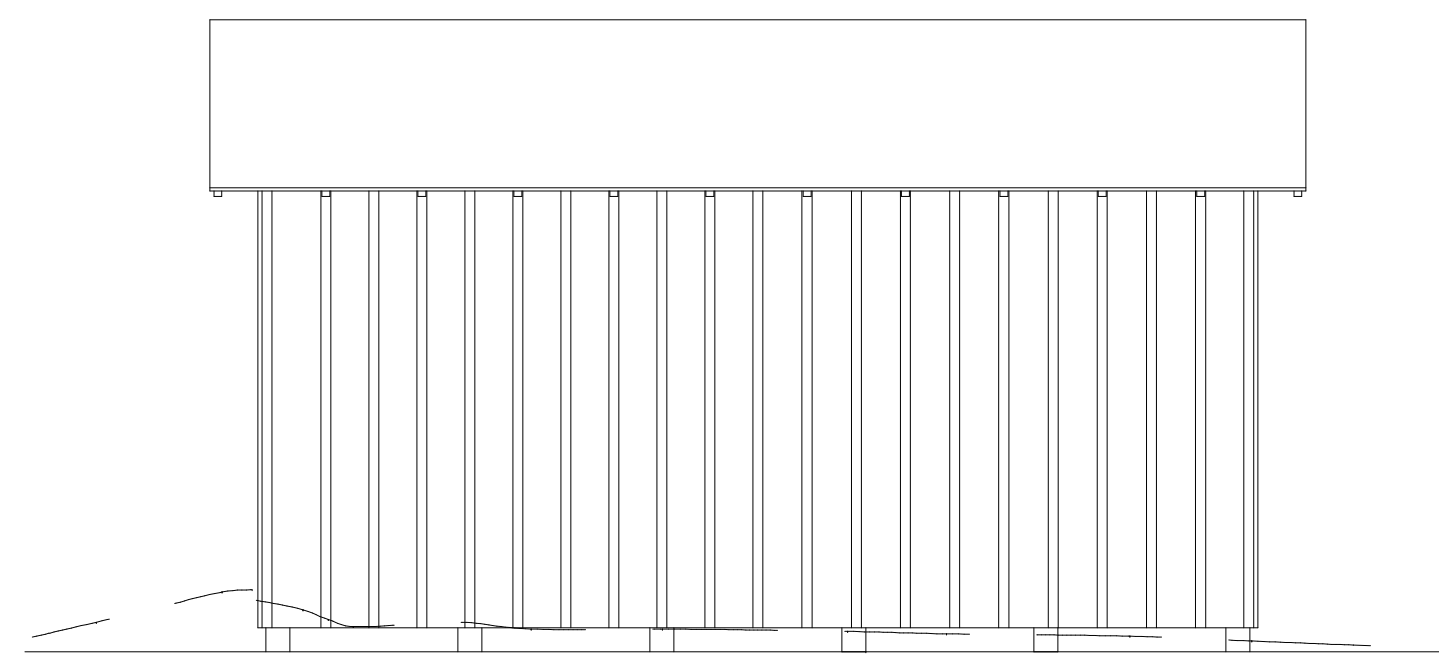
White Lettering on Red Background



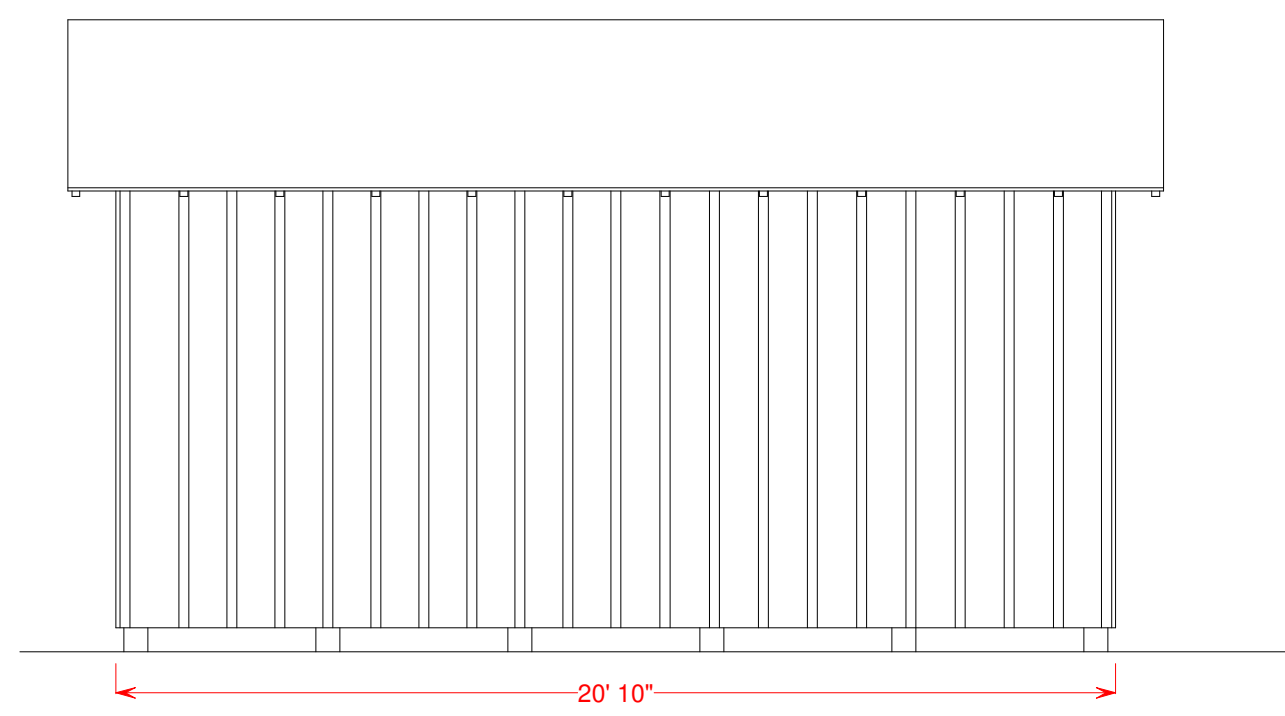
NORTH ELEVATION



SOUTH ELEVATION



WEST ELEVATION



EAST ELEVATION

Structure May Have Been Built Prior to 1916
Structure Razed Late 1986
See C & O Standards S-5 and S-5A

