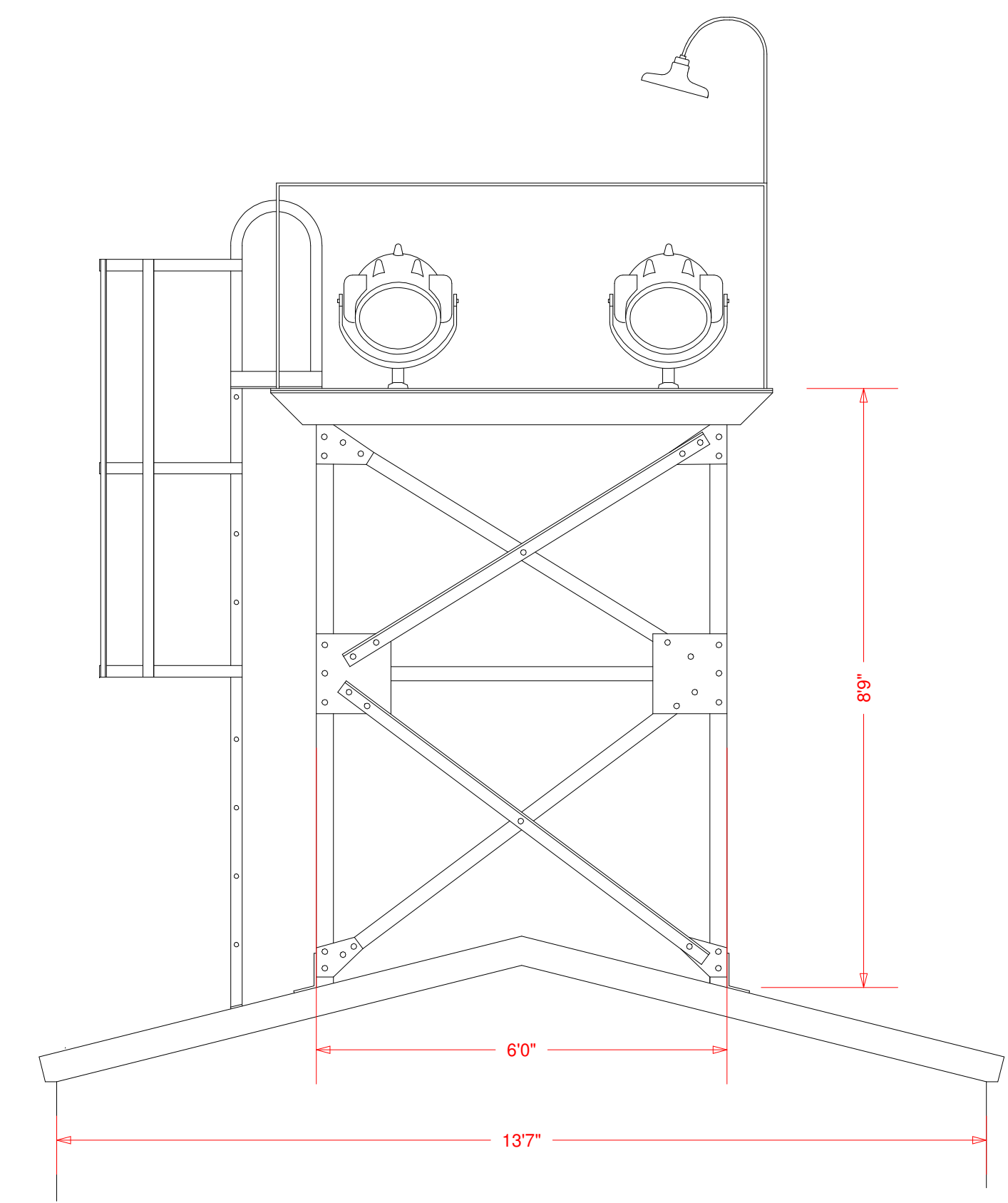
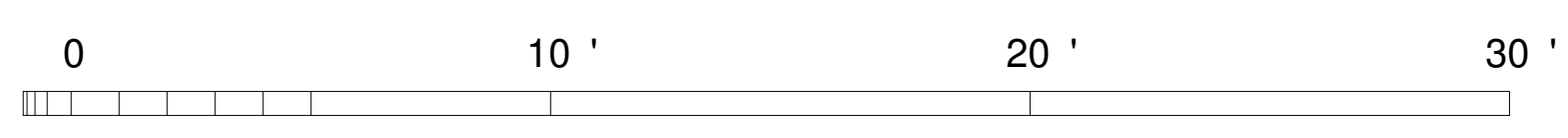
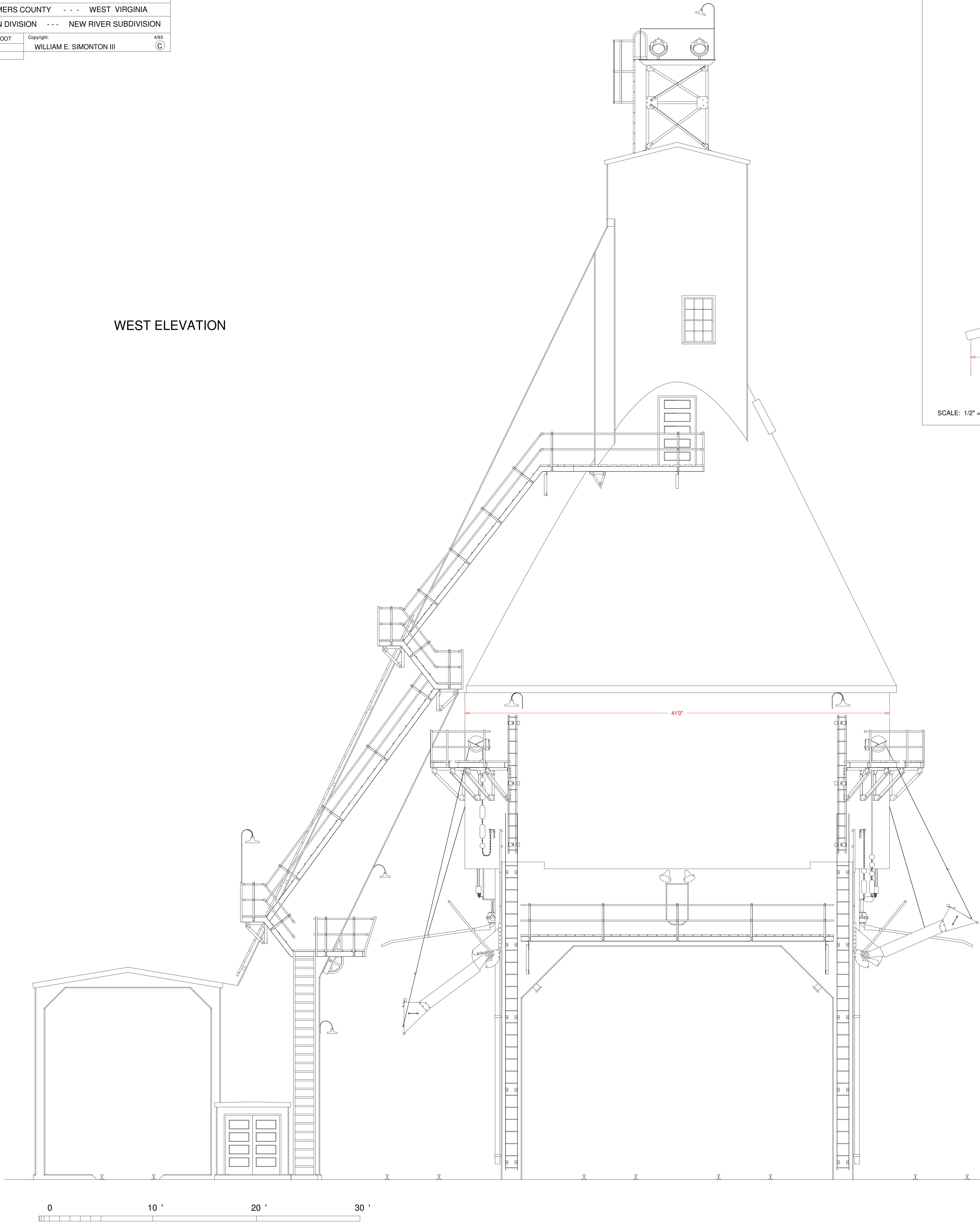


WEST ELEVATION



SCALE: 1/2" = 1 Foot

The step risers are 2" x 6" steel channel with 2" strap bolted in an "X" pattern to the bottom of the risers on 5'0" centers. The steps are 2" x 10" wood bolted to inverted L angle which is bolted to the steel channel.

Electrical conduit not shown - see C & O electrical plan for original lighting and photographs for the changes.

The "hatch" at the top of the cone on the south face of the coal dock apparently covers an "as built" window.

For additional details of the coaling shutters refer to Fairbanks, Morse & Co. Bulletin No. 73001, Locomotive Coaling Stations, reprinted by TLC Publishing (1989).